



El Dorado County Fire Protection District

September 2023

Run Statistics – Engines & Medics



Engine Companies:

Engine 17: 101

Engine 19: 80

Engine 25: 307

Engine 28: 119

Engine 72: 37

Total Responses: 644

Medic Units:

Medic 17: 121

Medic 19: 178

Medic 25: 284

Medic 28: 223

Medic 49: 232

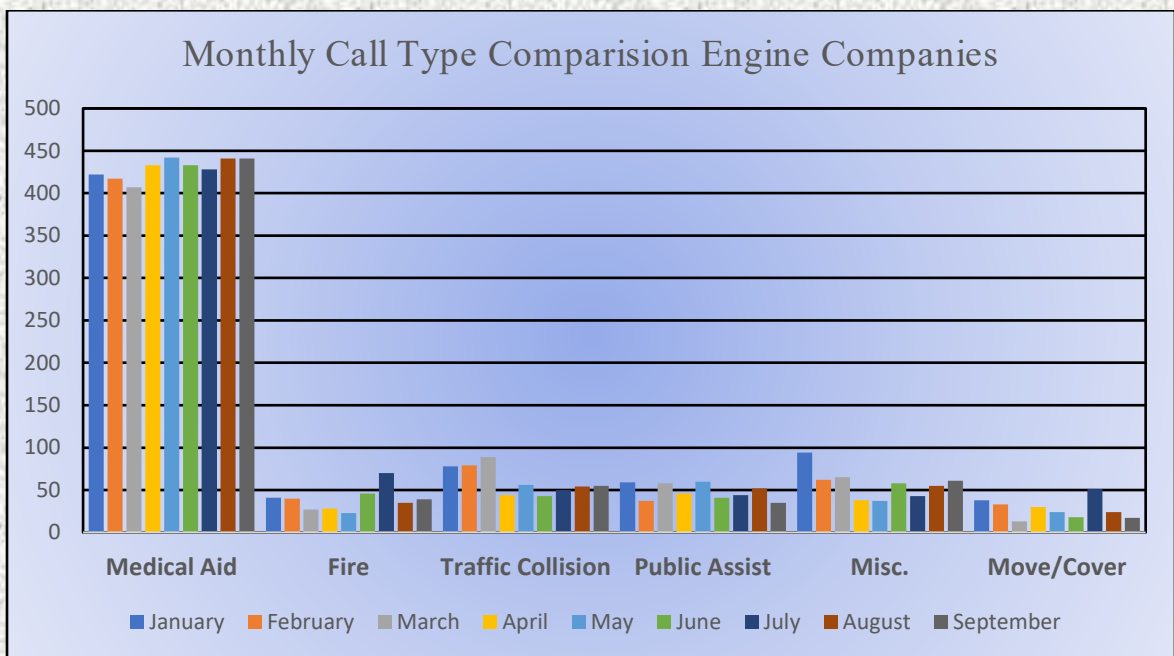
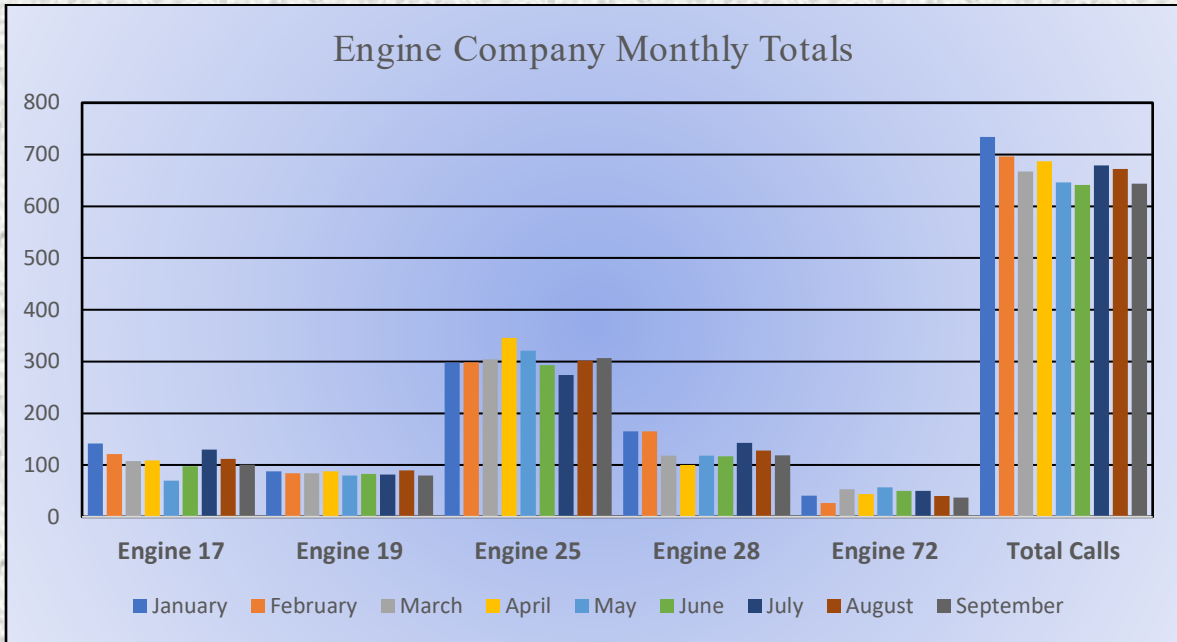
Total Responses: 1,038





El Dorado County Fire Protection District

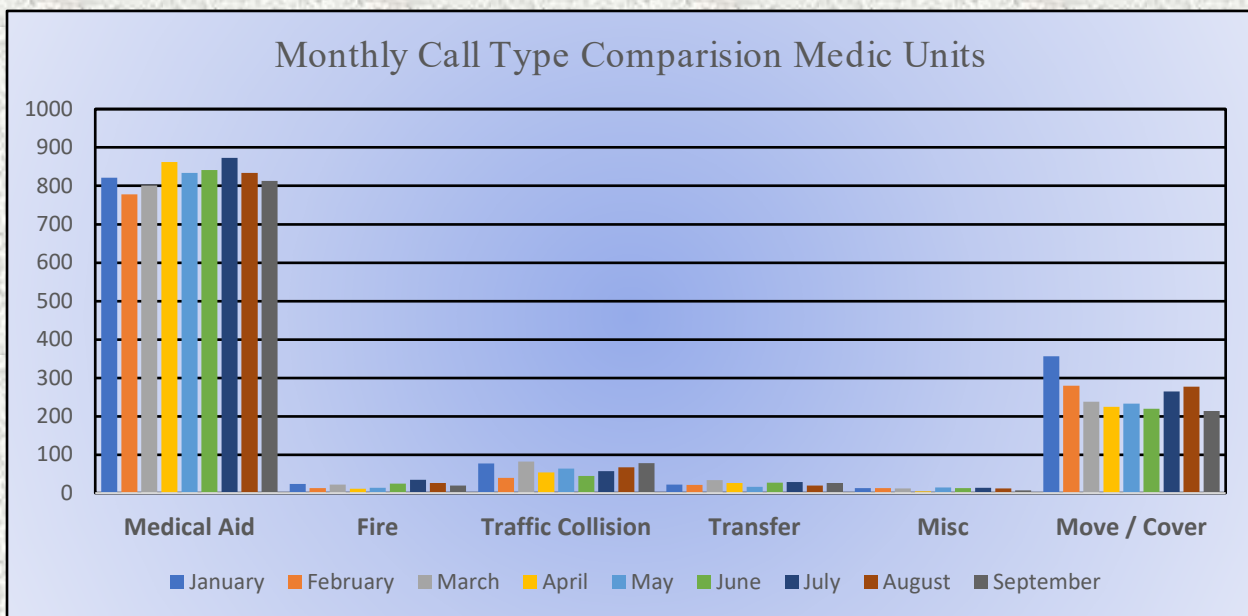
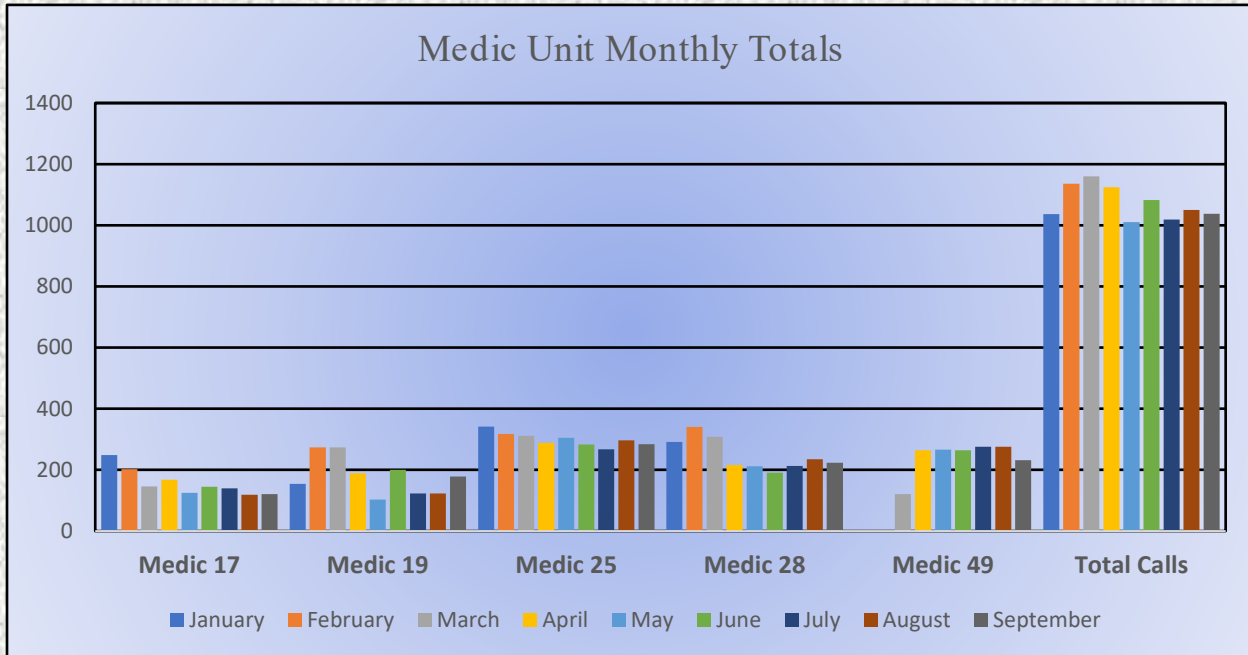
Monthly Run Statistics and Call Break Down September 2023 Engine Companies and Medic Units





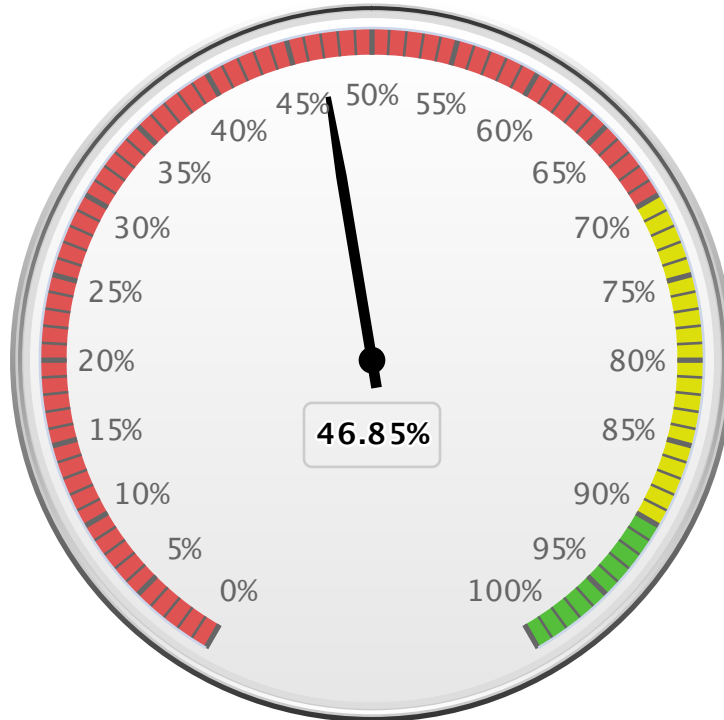
El Dorado County Fire Protection District

Monthly Run Statistics and Call Break Down September 2023 Engine Companies and Medic Units



Percentage of Unit Total Response Times Under 09:00 Minutes

Sep 01, 2023 to Sep 30, 2023



Unit Average Total Response Time (HH:MM:SS)

Sep 01, 2023 to Sep 30, 2023



Unit Median Total Response Time (HH:MM:SS)

Sep 01, 2023 to Sep 30, 2023





El Dorado County Fire Protection District



Station 25 Run Statistics September 2023

ENGINE 25: 307 Total Calls

Medical Aid- 227
Fire- 22
Traffic Collision- 16
Public Assist - 16
Misc. – 22
Move/Cover – 5

MEDIC 25: 284 Total Calls

Medical Aid- 235
Fire- 4
Traffic Collision- 16
Transfer -18
Misc.- 2
Move/Cover - 24



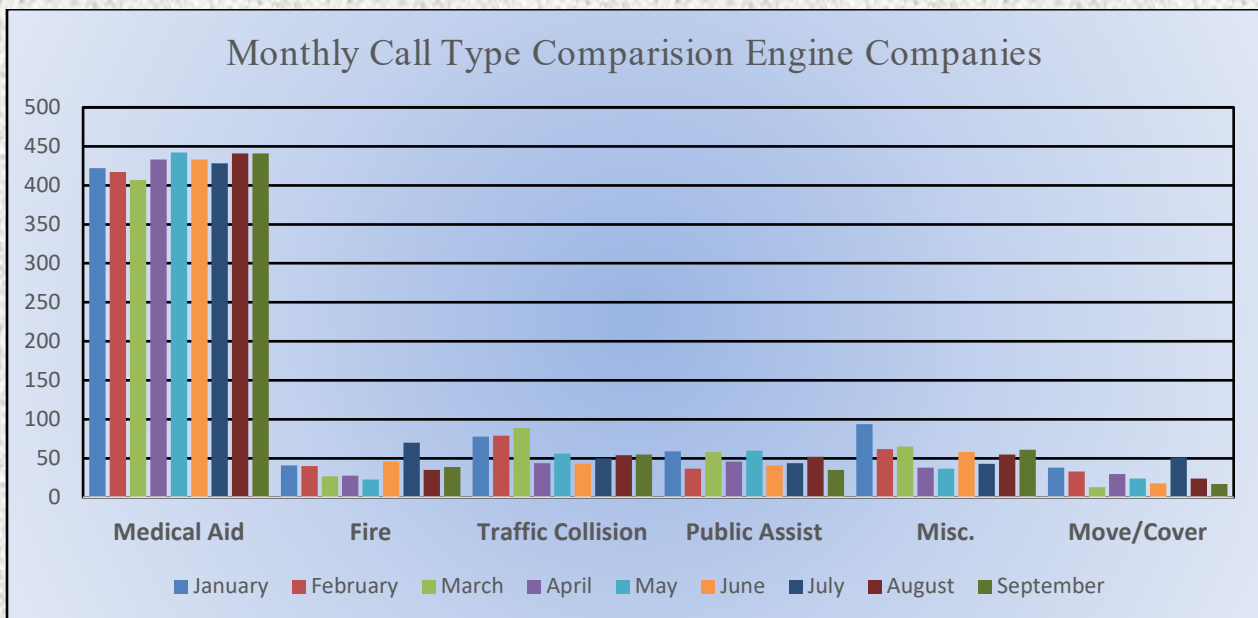
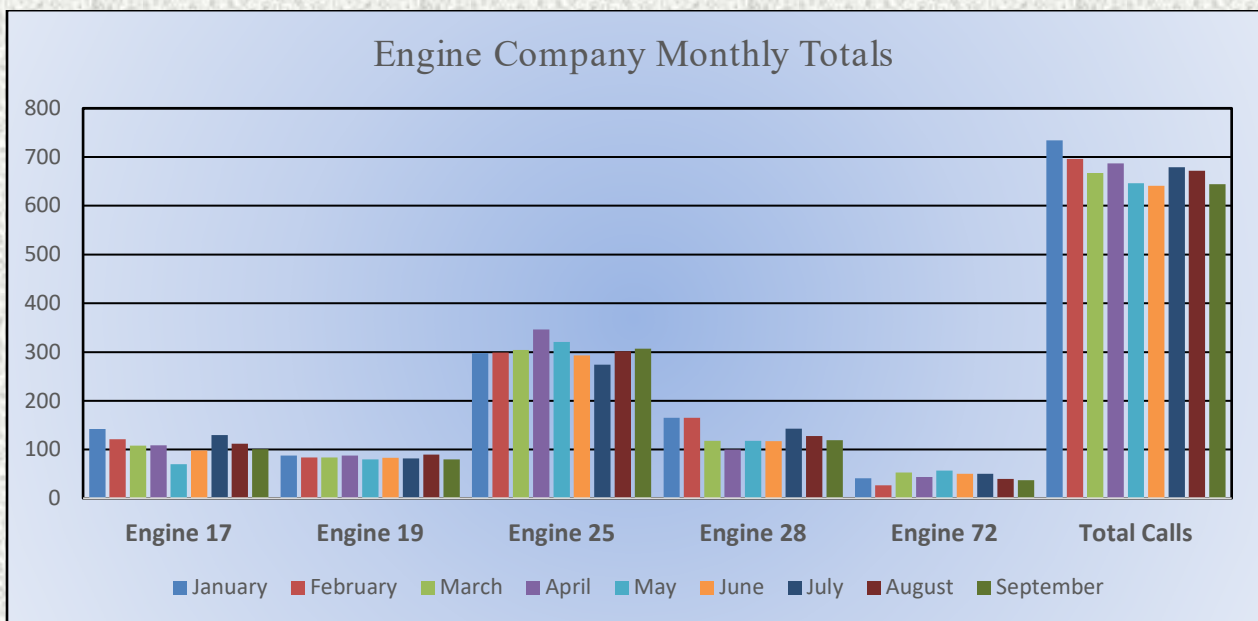


El Dorado County Fire Protection District



Monthly Run Statistics and Call Break Down September 2023 Engine Companies and Medic Units

Total Responses for Engine Companies: 644

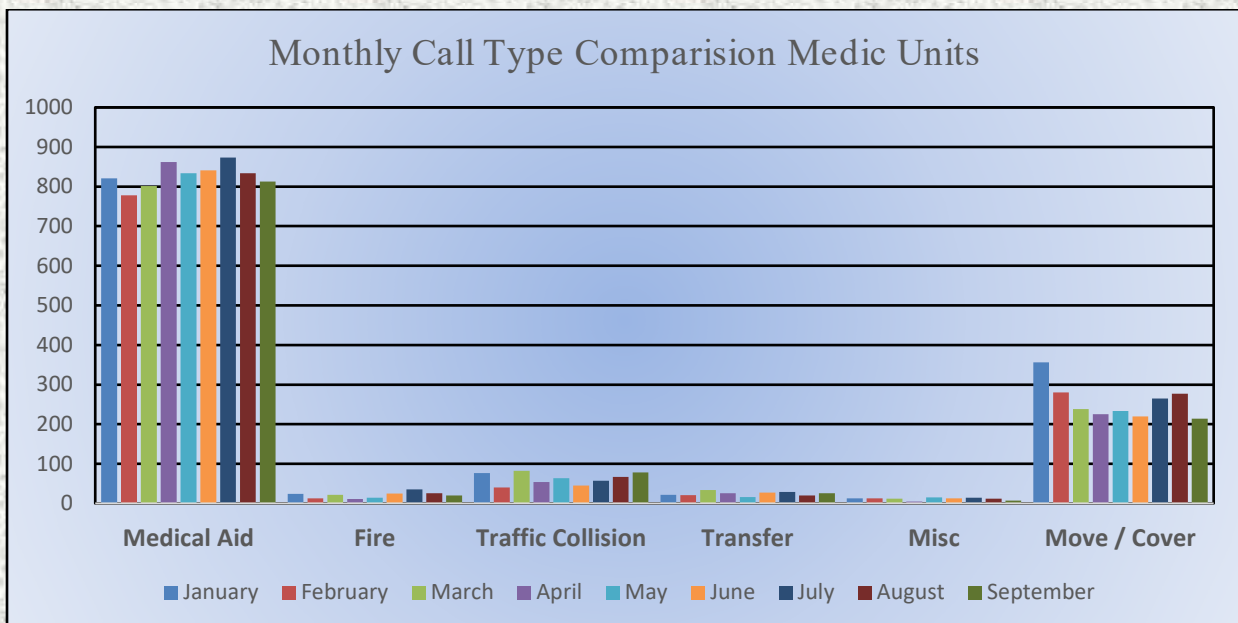
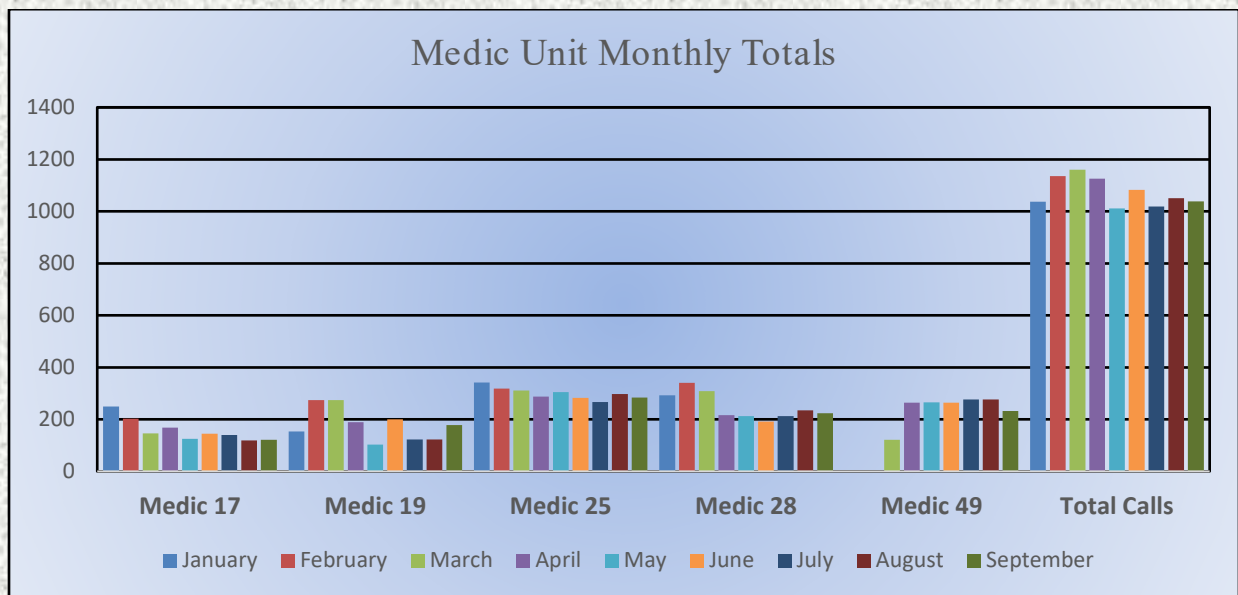




El Dorado County Fire Protection District

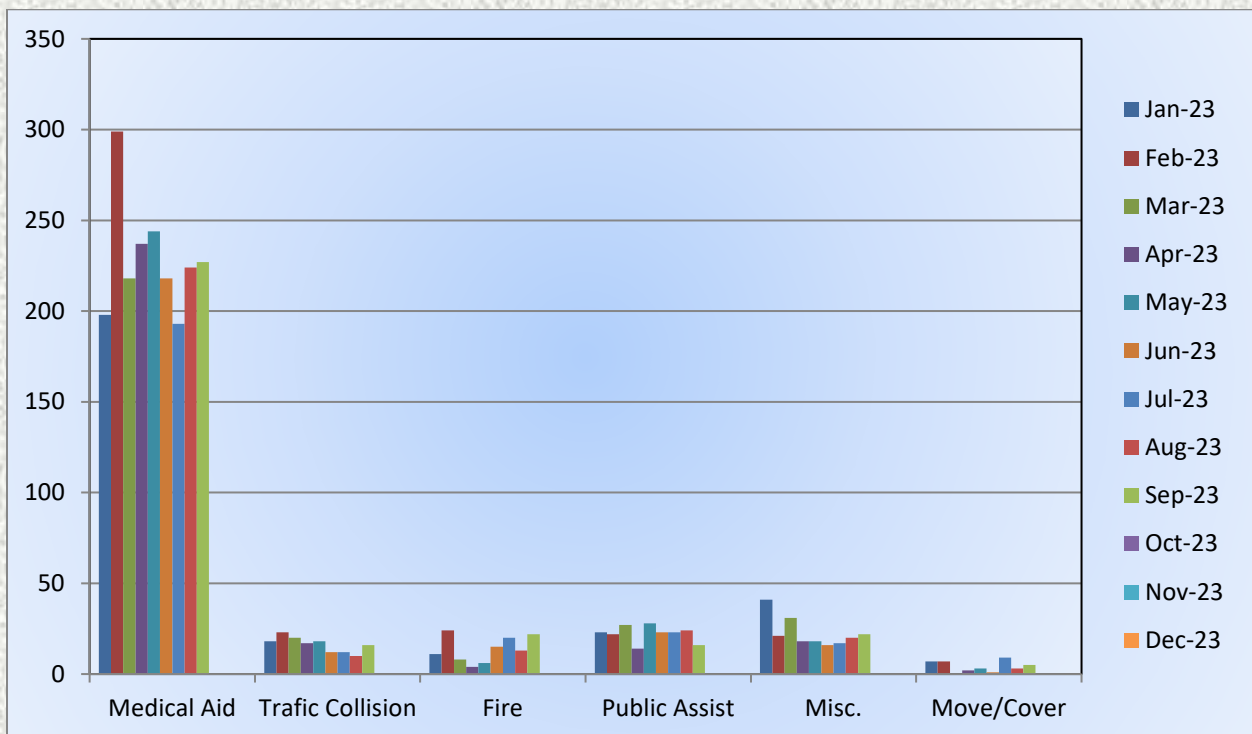
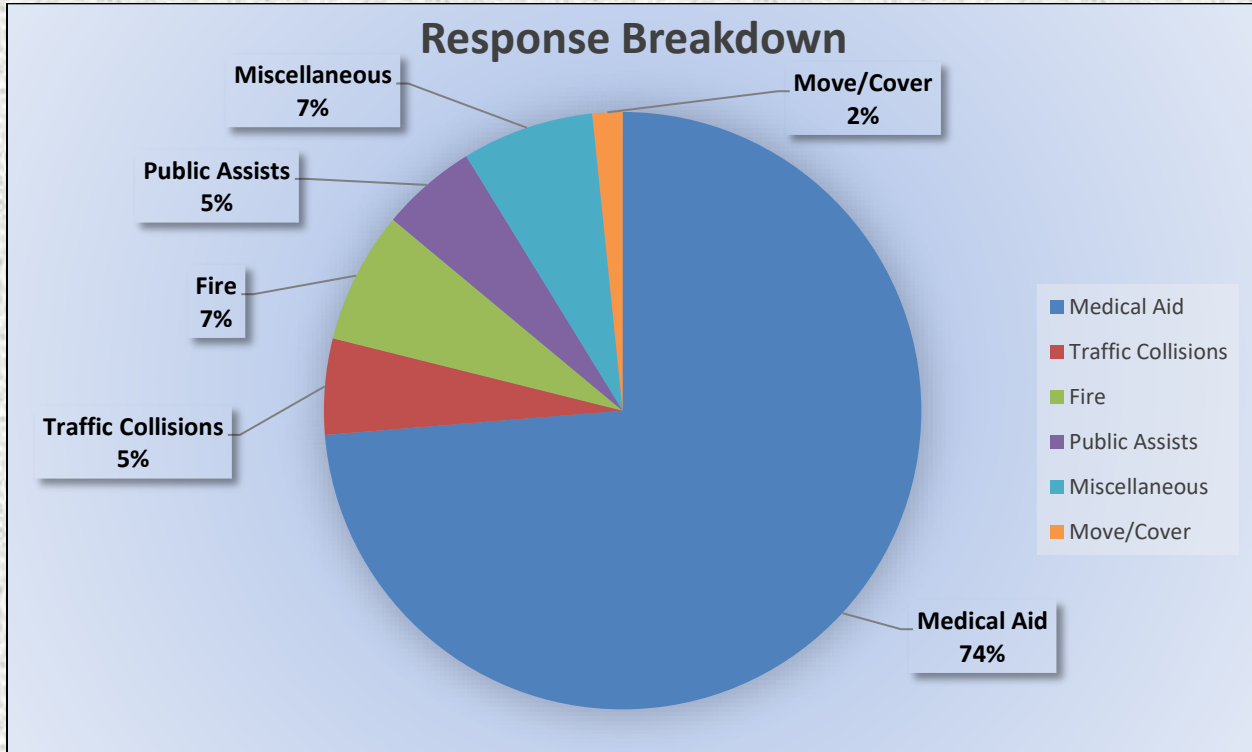


Total Responses for Medic Units: 1,038





Engine 25 Monthly Statistics Comparison





El Dorado County Fire Protection District

Station 17 Run Review September 2023

ENGINE 17: 101 Total Calls

Medical Aid- 68

Fire- 6

Traffic Collision- 10

Public Assist- 6

Misc- 11

Move/Cover - 0

MEDIC 17: 121 Total Calls

Medical Aid- 102

Fire- 7

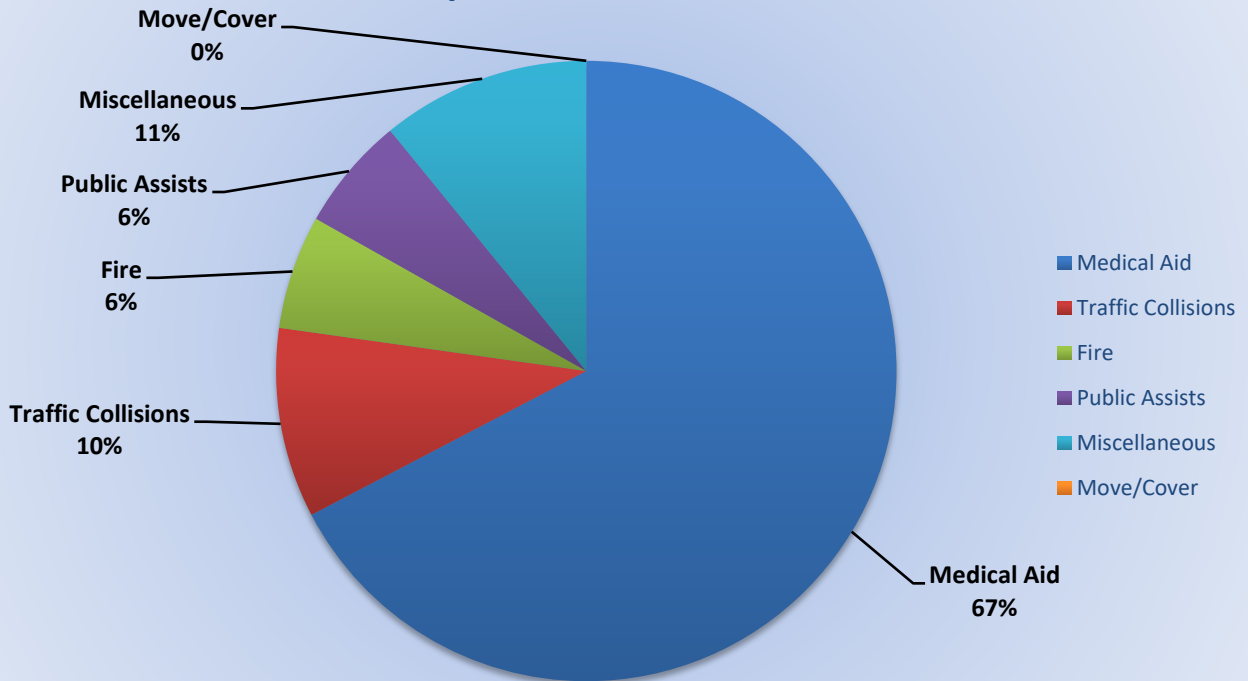
Traffic Collision- 9

Transfer- 1

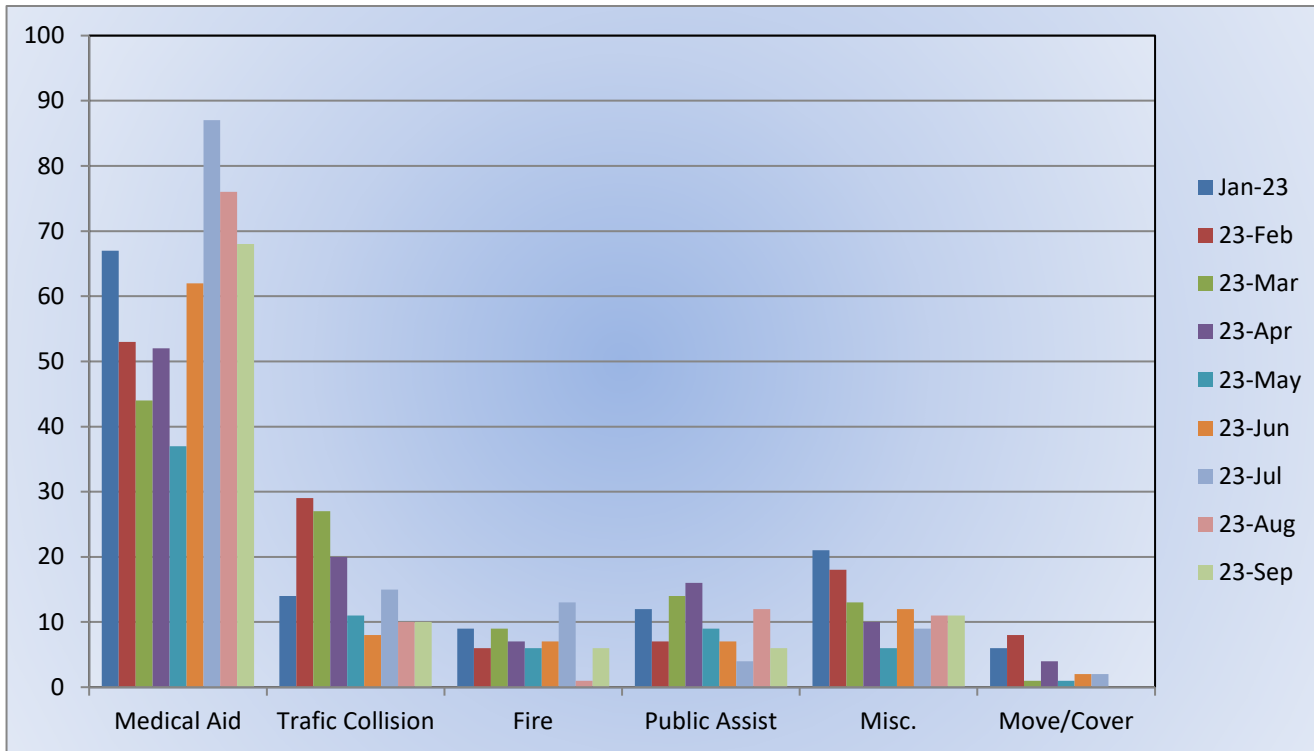
Misc- 2

Move/Cover - 62

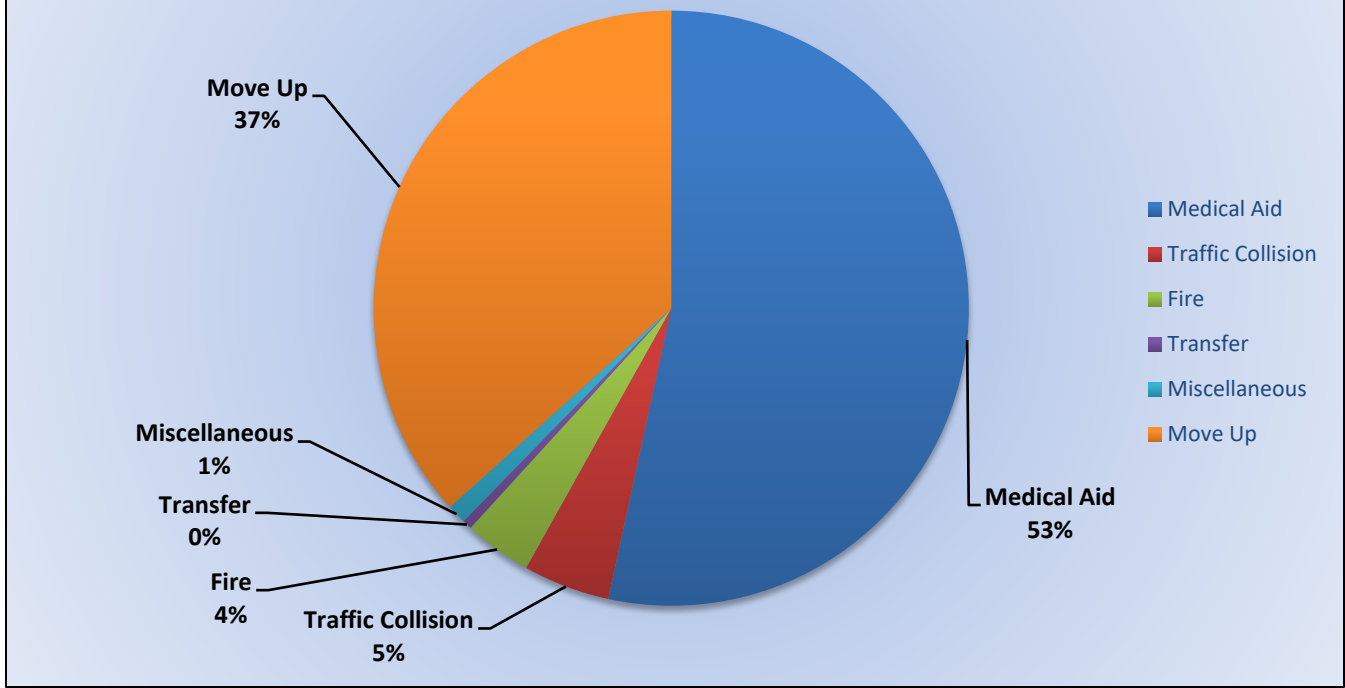
Response Breakdown



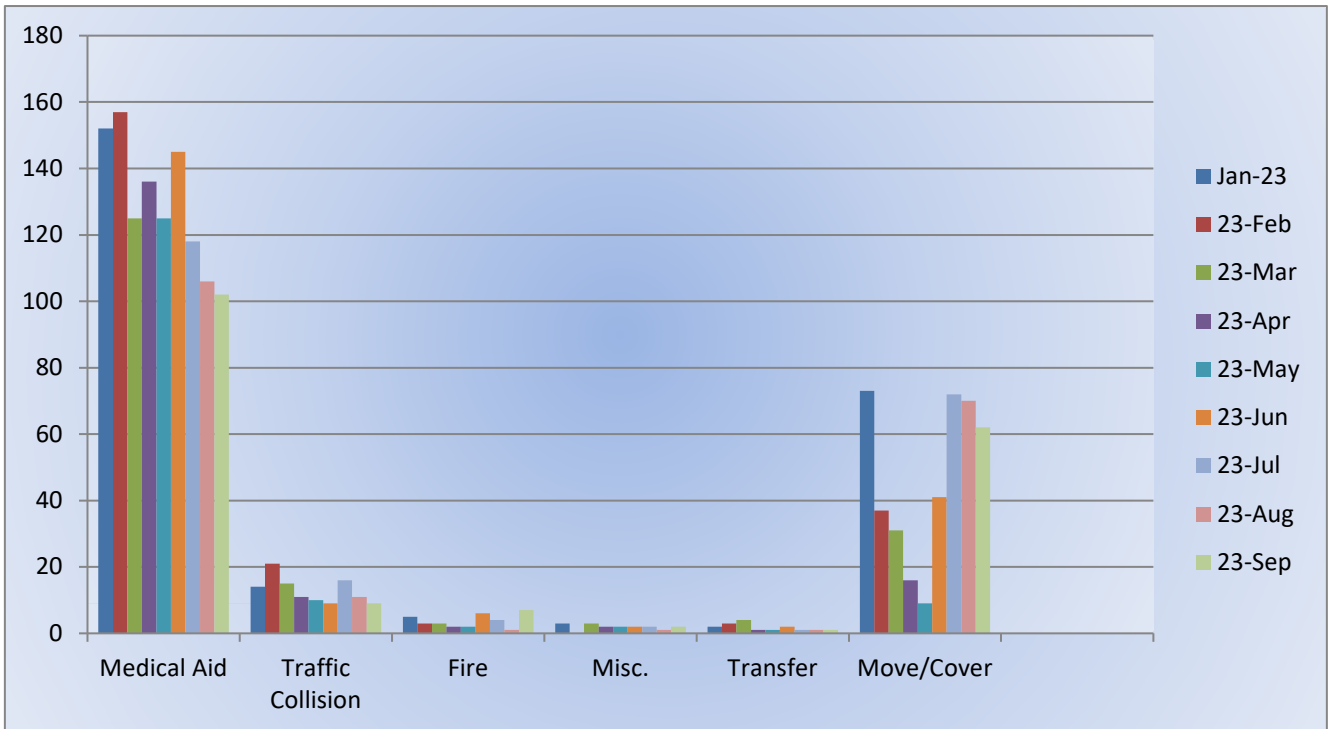
E17 Monthly Statistics Comparison



Response Breakdown



M17 Monthly Statistics Comparison





El Dorado County Fire Protection District

Station 19 Run Review September 2023

ENGINE 19: 80 Total Calls

Medical Aid - 43

Fire - 2

Traffic Collision - 12

Public Assist - 10

Misc. - 8

Move/Cover - 5

MEDIC 19: 178 Total Calls

Medical Aid- 92

Fire- 1

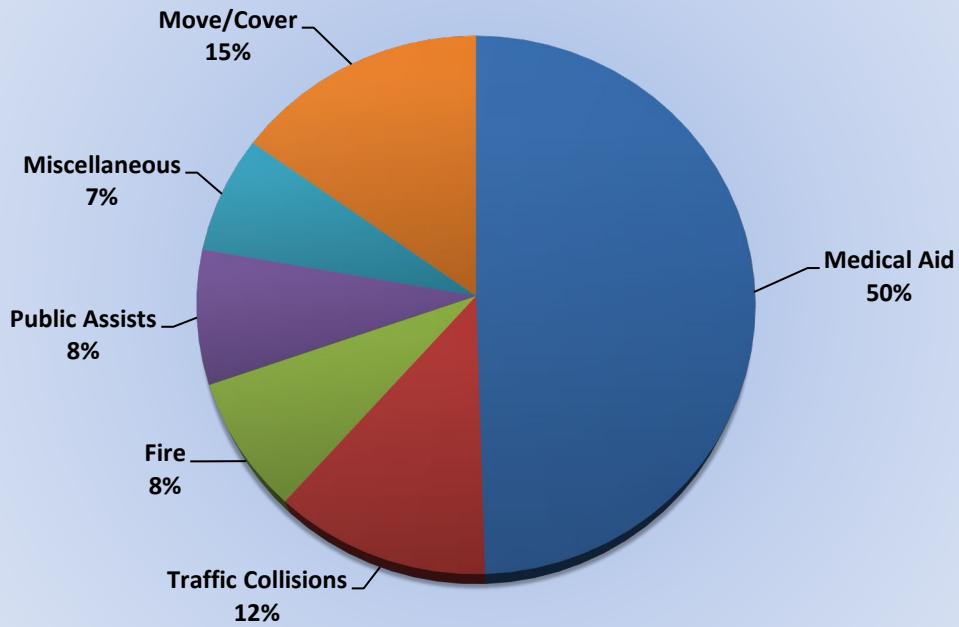
Traffic Collision- 13

Transfer- 0

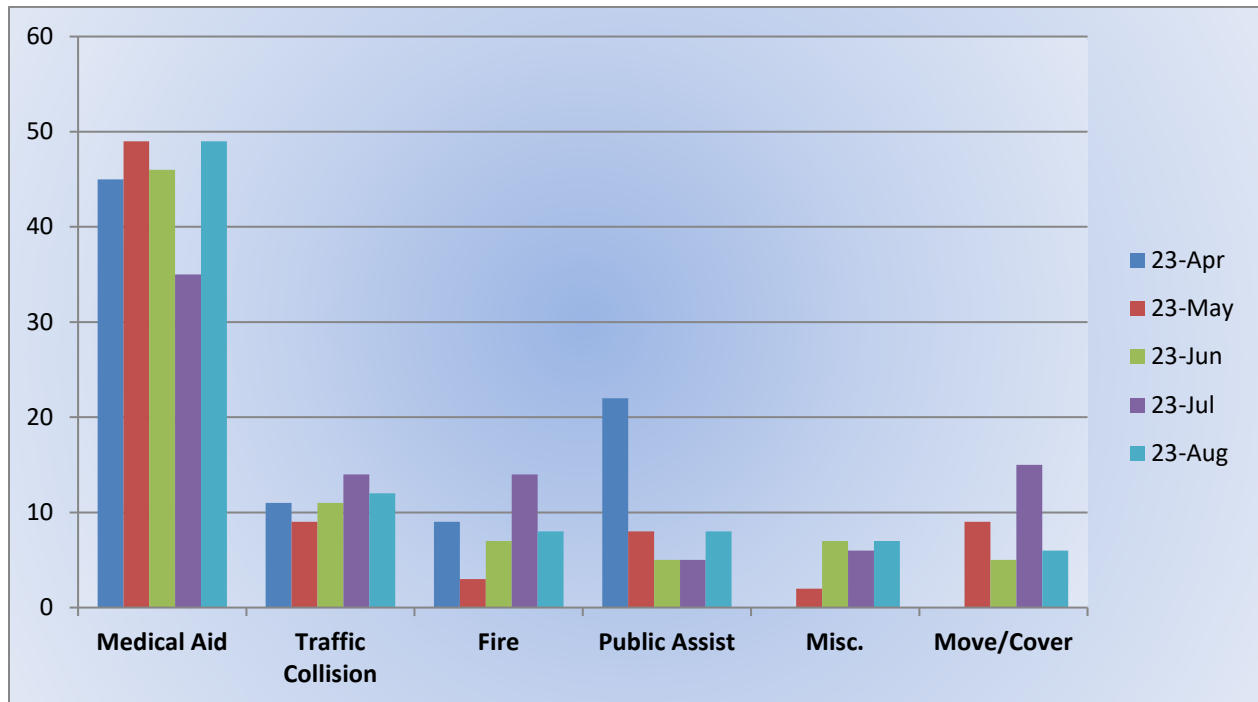
Misc.- 0

Move/Cover - 72

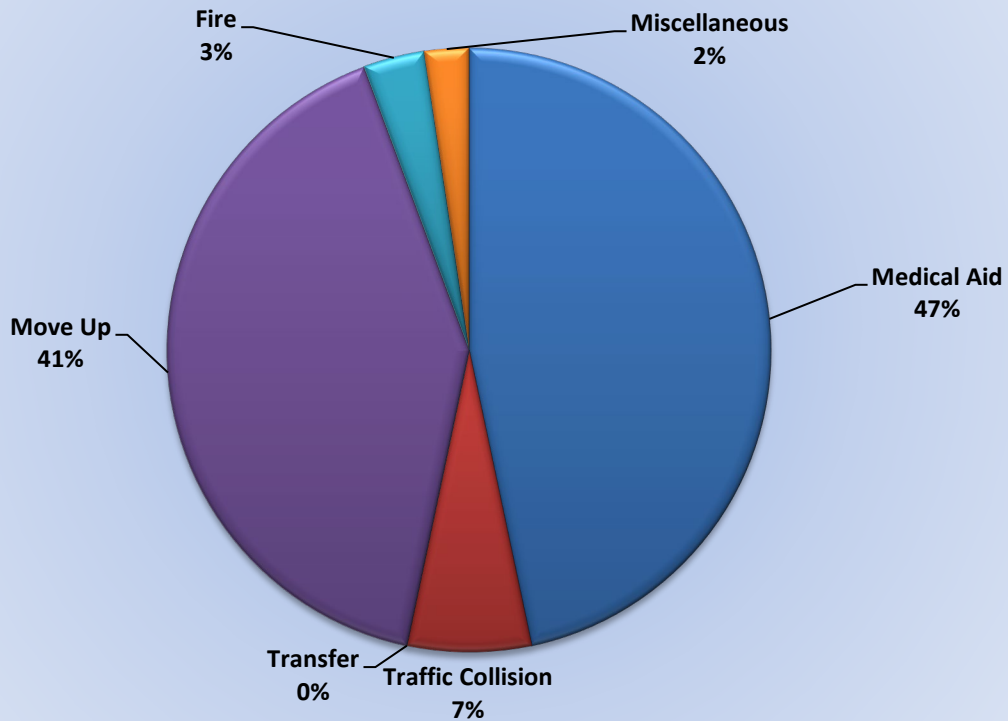
Response Breakdown August 2023



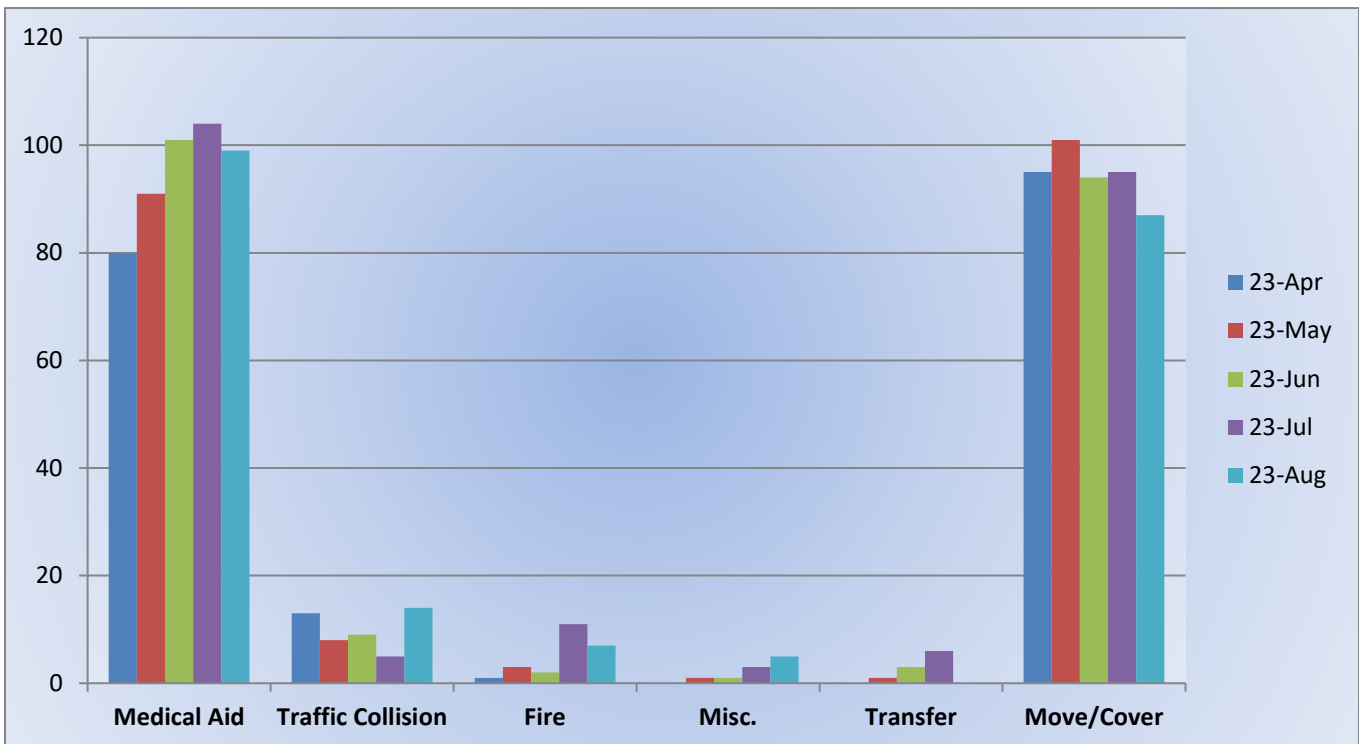
E19 Monthly Statistics Comparison



Response Breakdown August 2023



M19 Monthly Statistics Comparison





El Dorado County Fire Protection District

Station 25 Run Review September 2023

ENGINE 25: 307 Total Incidents

Medical Aid- 227

Fire- 22

Traffic Collision- 16

Public Assist- 16

Misc- 22

Move/Cover - 5

MEDIC 25: 284 Total Incidents

Medical Aid- 235

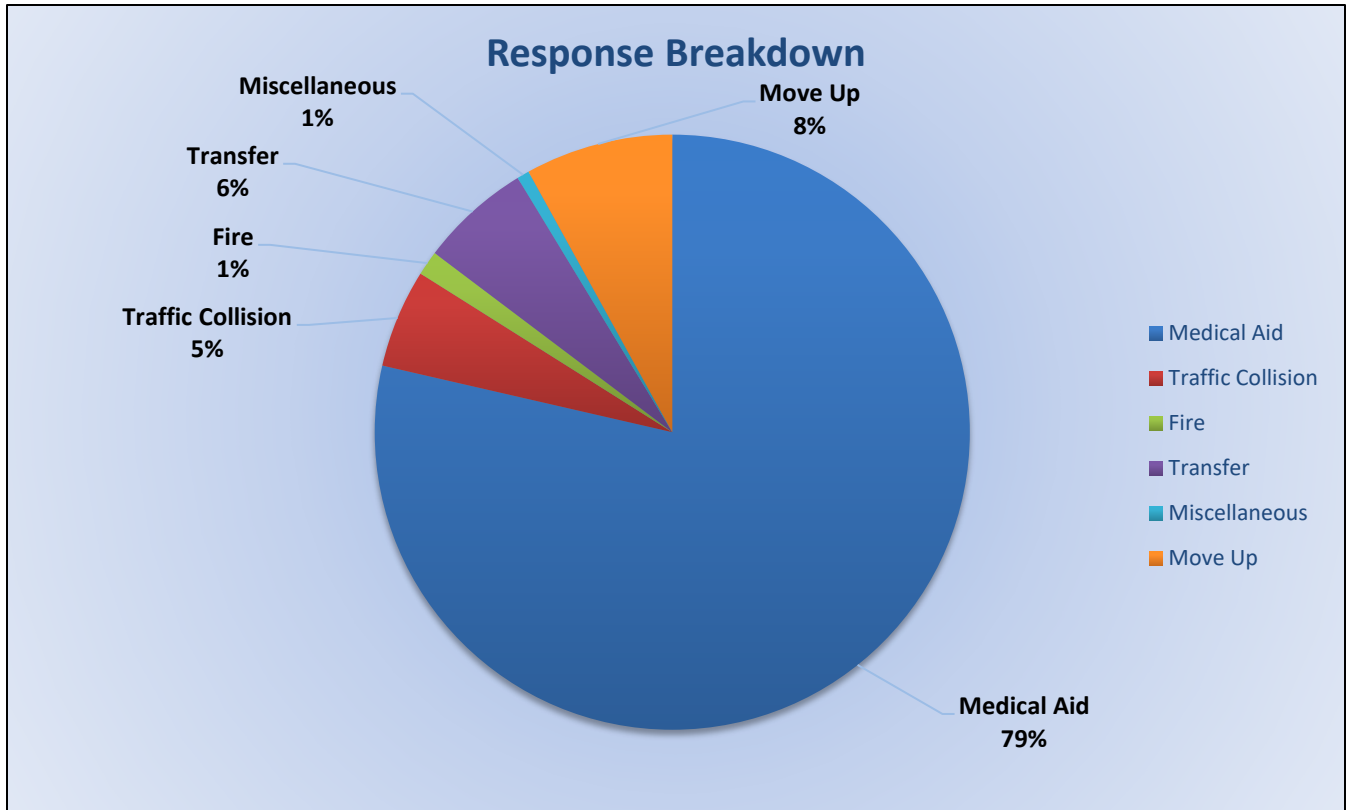
Fire- 4

Traffic Collision- 16

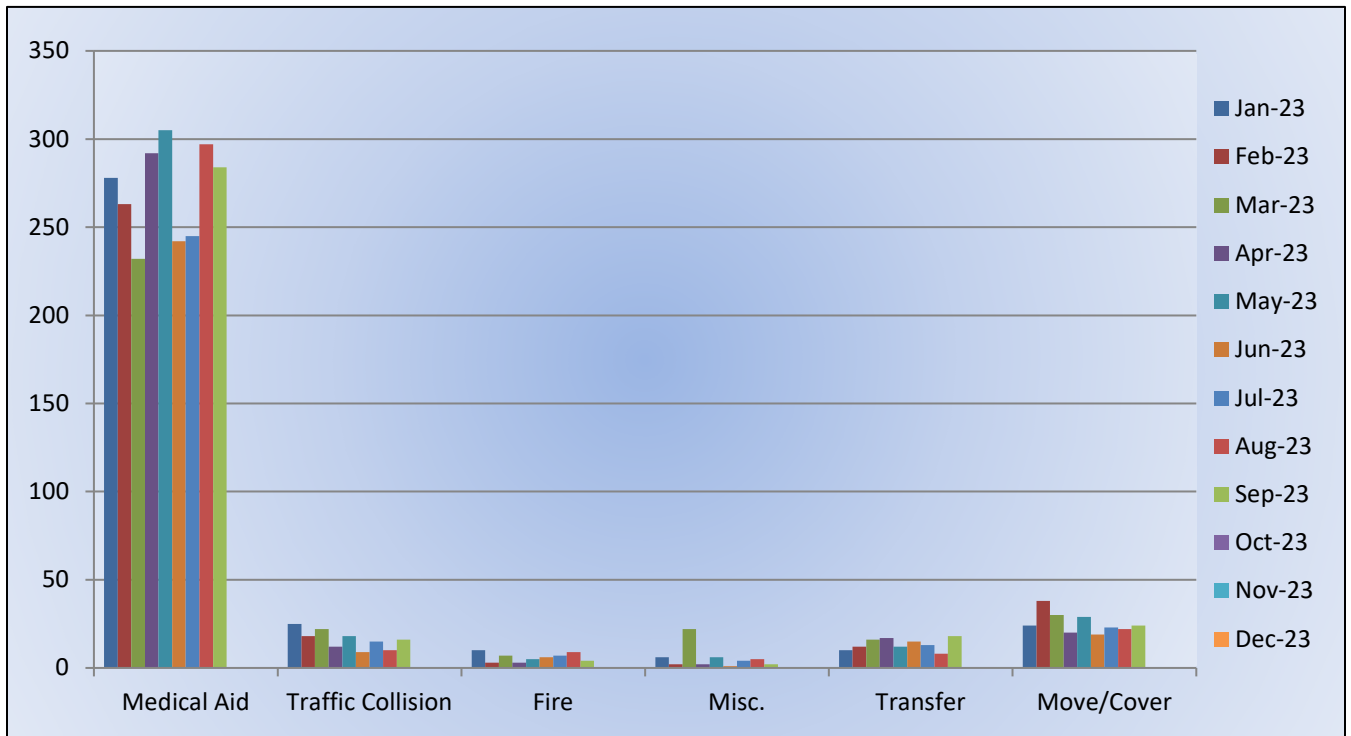
Transfer- 18

Misc- 2

Move/Cover – 24



M25 Monthly Statistics Comparison





El Dorado County Fire Protection District

Station 28 Run Review August 2023

ENGINE 28: 119 Total Calls

Medical Aid - 74

Fire - 7

Traffic Collision - 13

Public Assist - 2

Misc - 19

Move/Cover - 7

MEDIC 28: 223 Total Calls

Medical Aid- 197

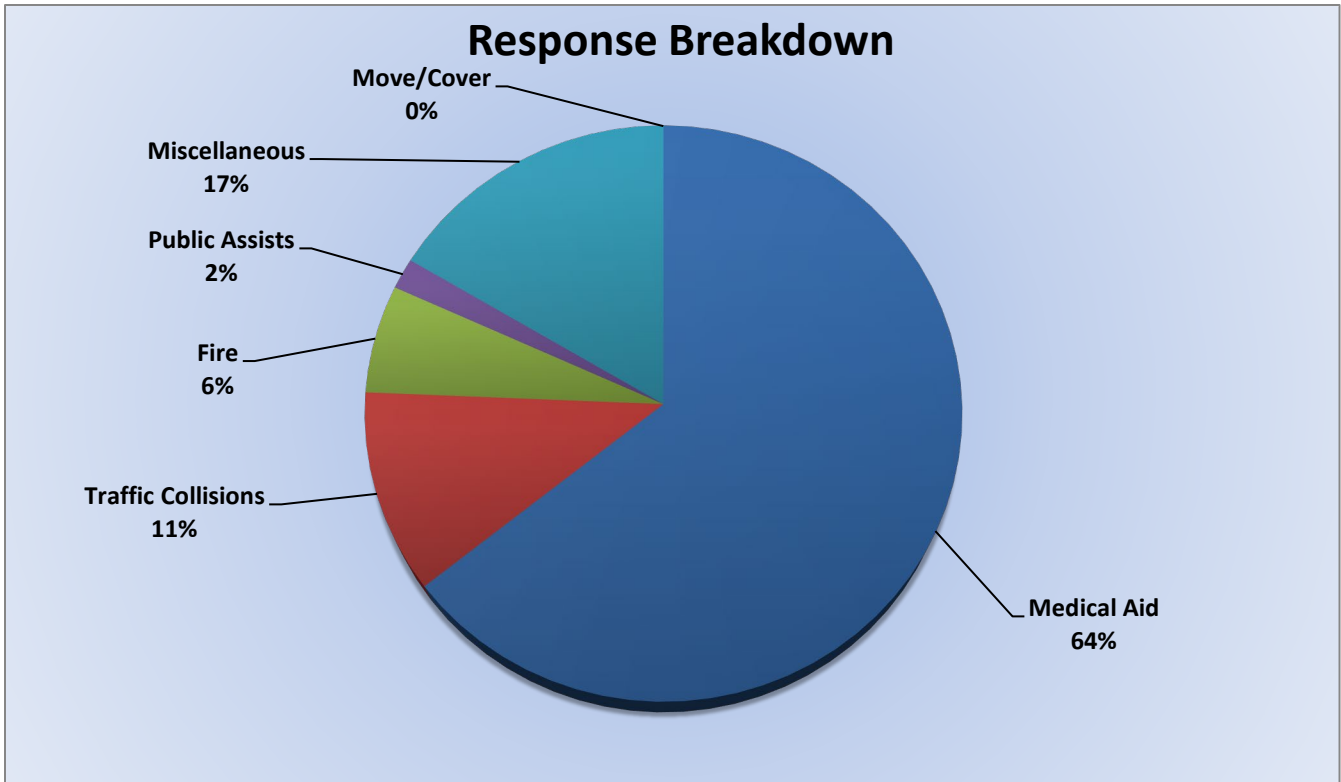
Fire- 3

Traffic Collision-17

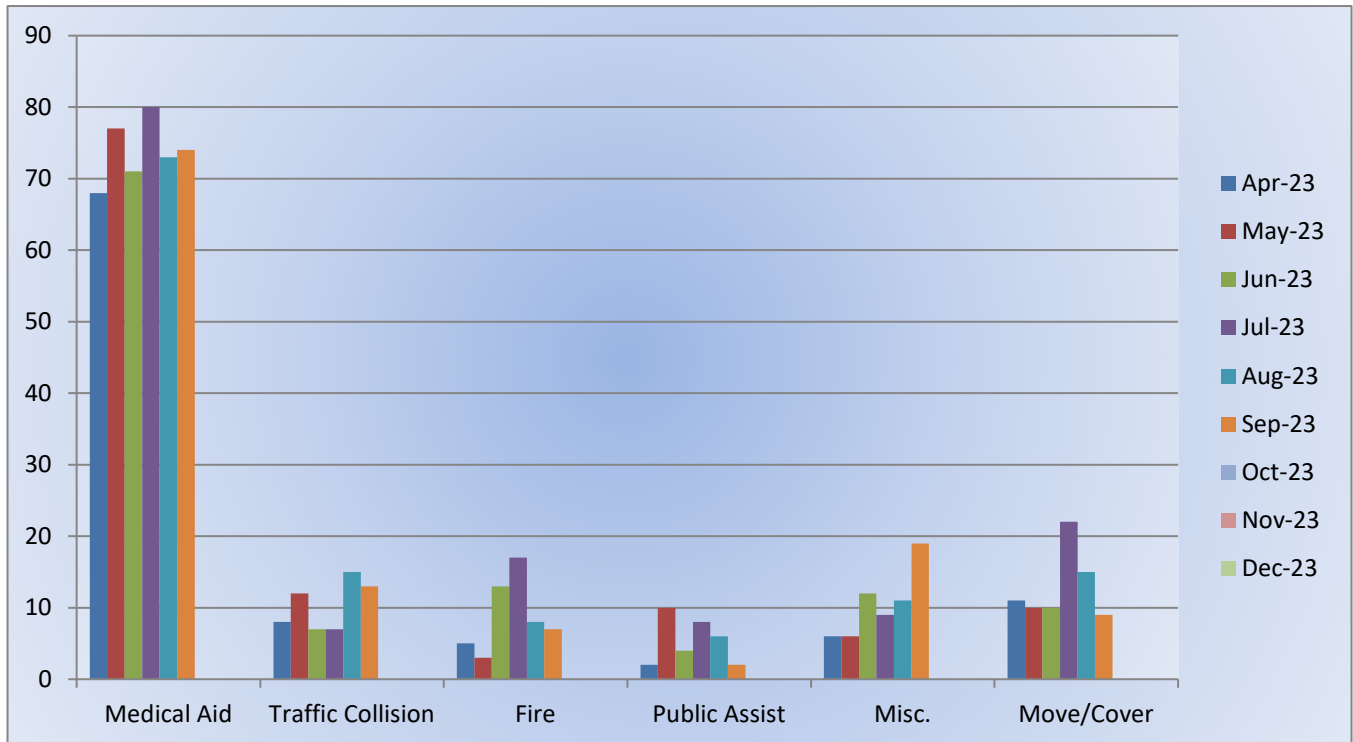
Transfer- 2

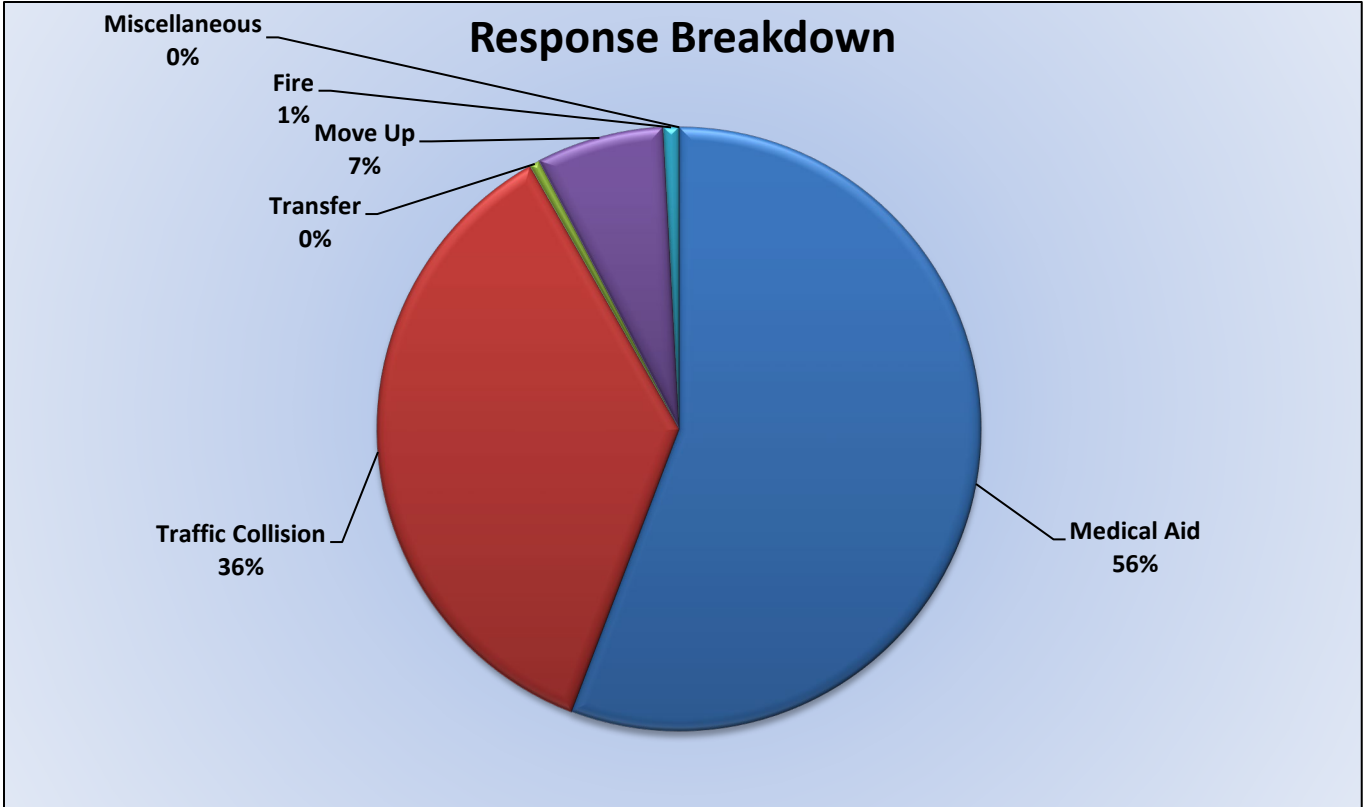
Misc- 0

Move/Cover - 24

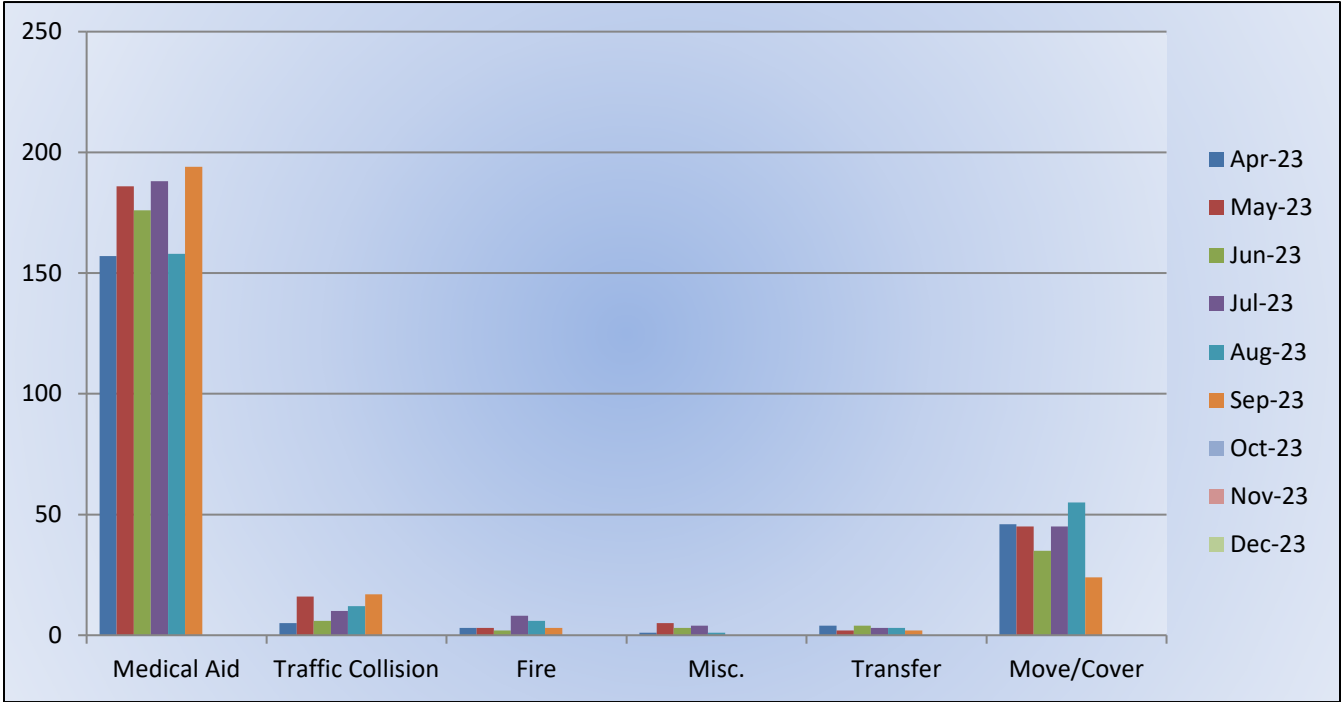


E28 Monthly Statistics Comparison





M28 Monthly Statistics Comparison





El Dorado County Fire Protection District

Station 72 and Medic 49 Run Review September 2023

ENGINE 72: 37 Total Calls

Medical Aid – 29

Fire – 2

Traffic Collision – 4

Pubilc Assist – 1

Misc – 1

Move/Cover – 0

MEDIC 49: 232 Total Calls

Medical Aid – 187

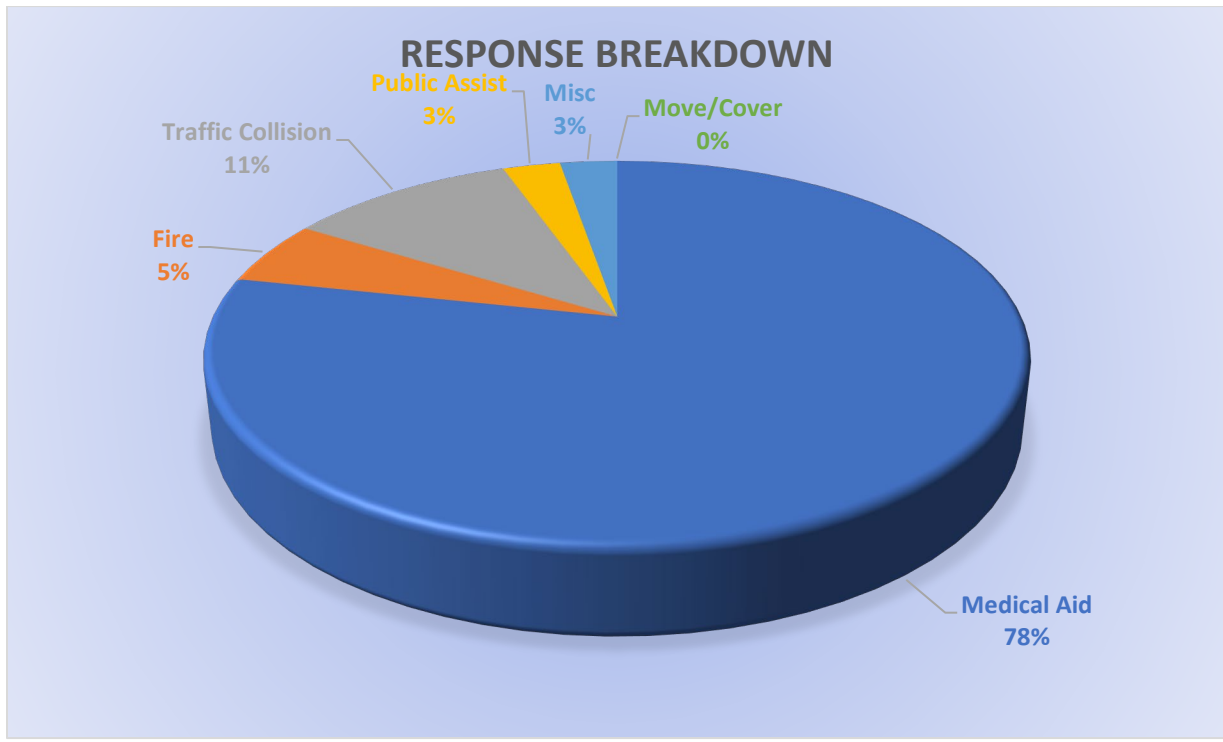
Fire – 5

Traffic Collision – 13

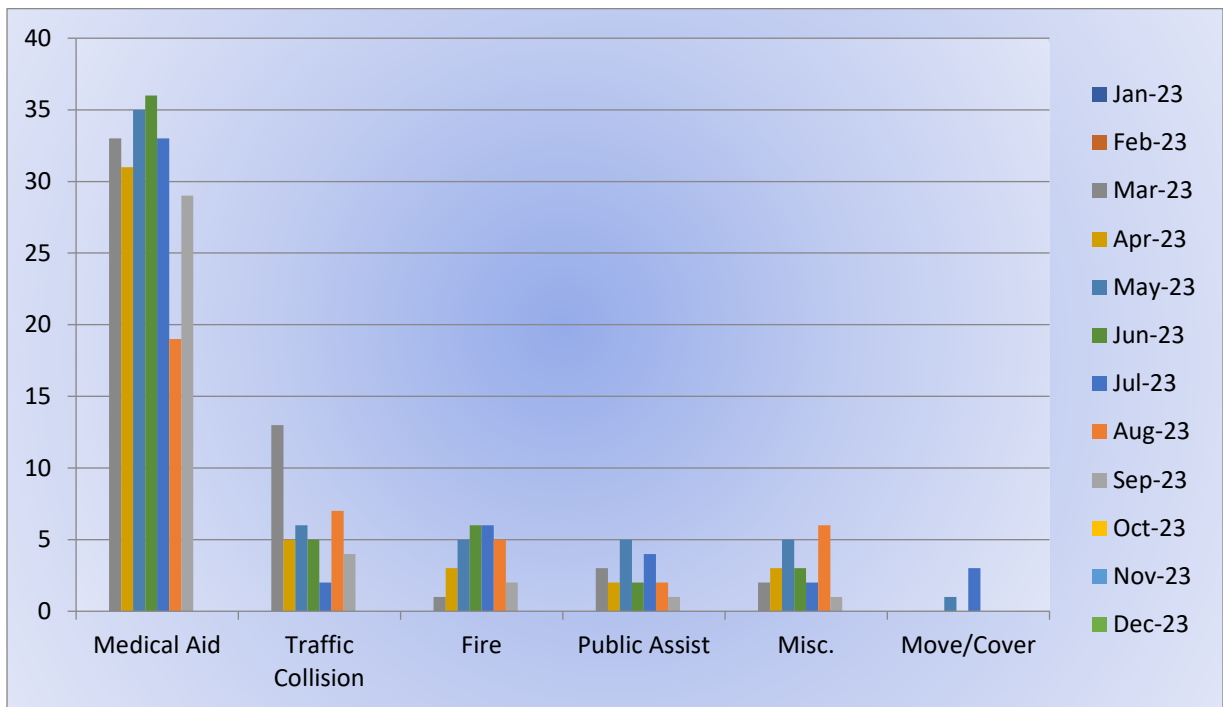
Transfer – 5

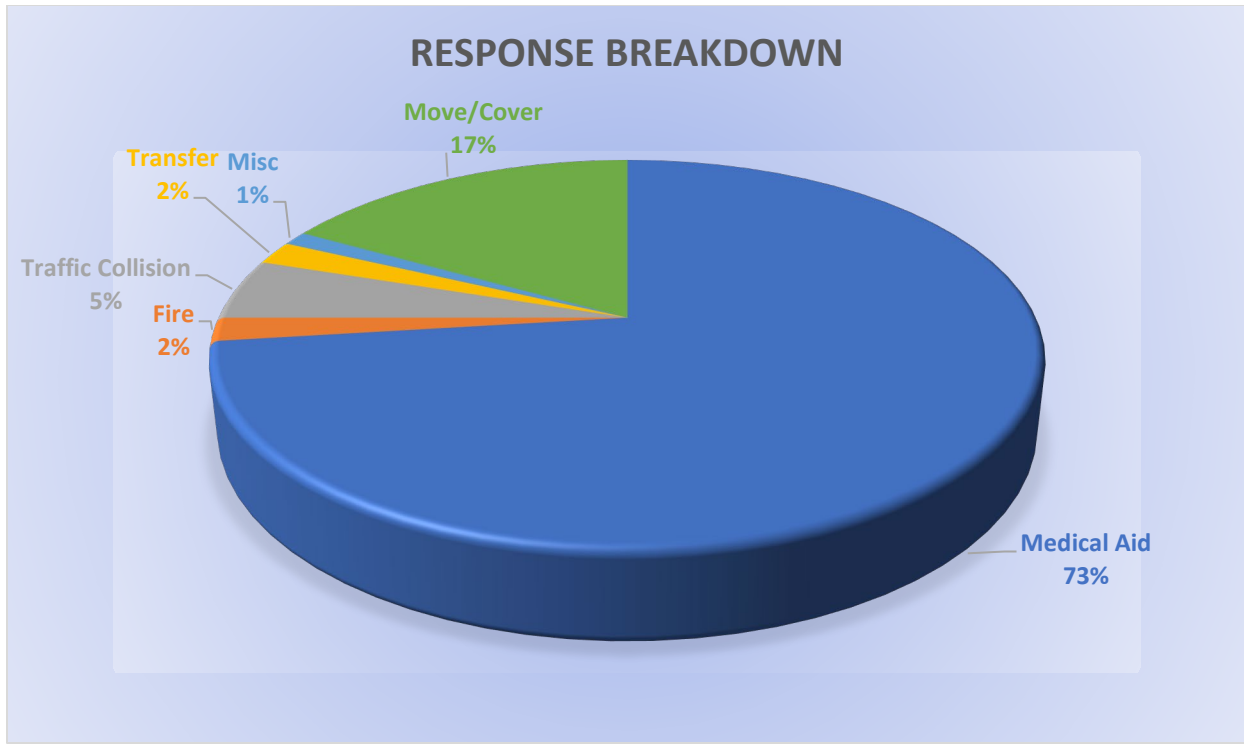
Misc – 3

Move/Cover – 32



E72 Monthly Statistics Comparison





M49 Monthly Statistics Comparison

