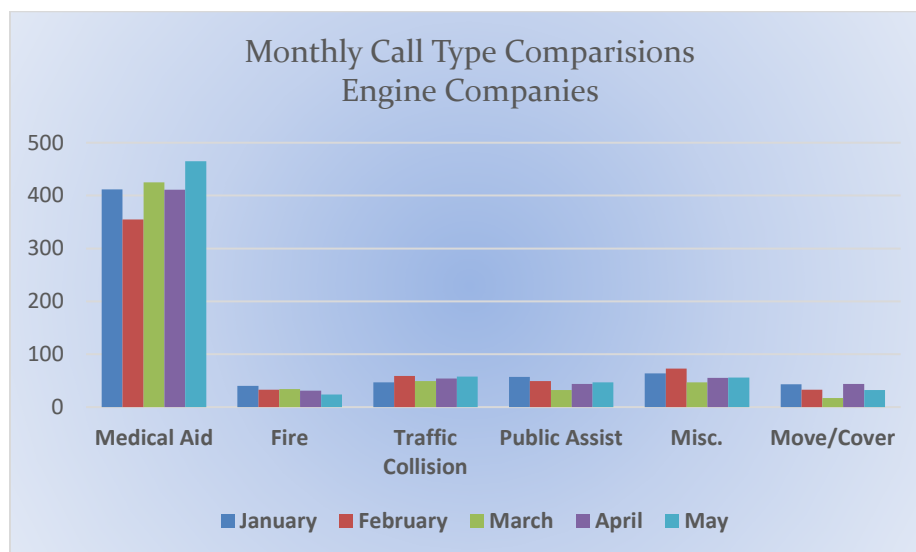
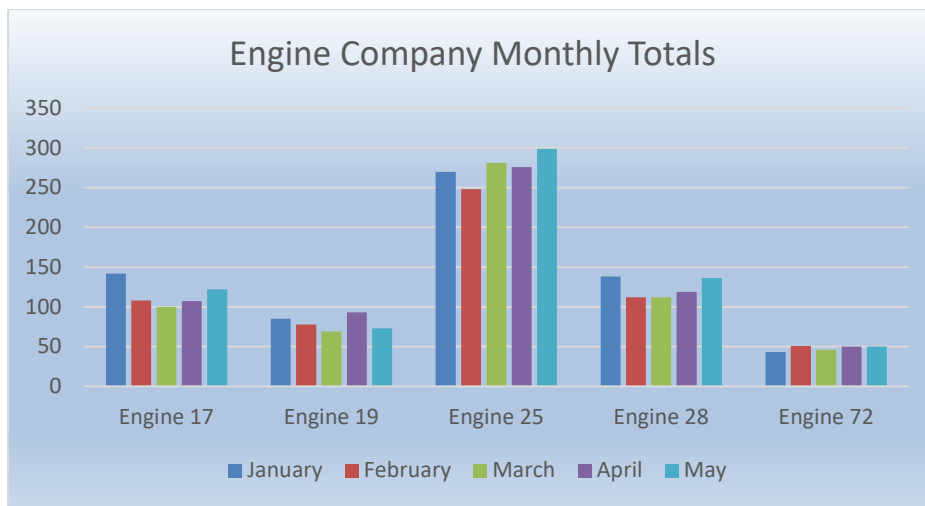




## El Dorado County Fire Protection District

### Monthly Run Statistics and Call Break Down – May 2022 Engine Companies and Medic Units

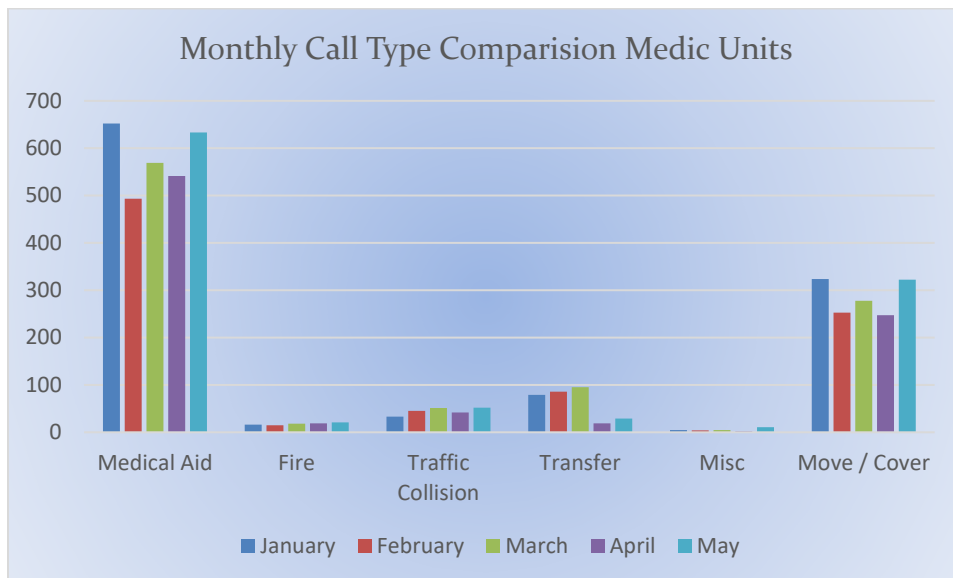
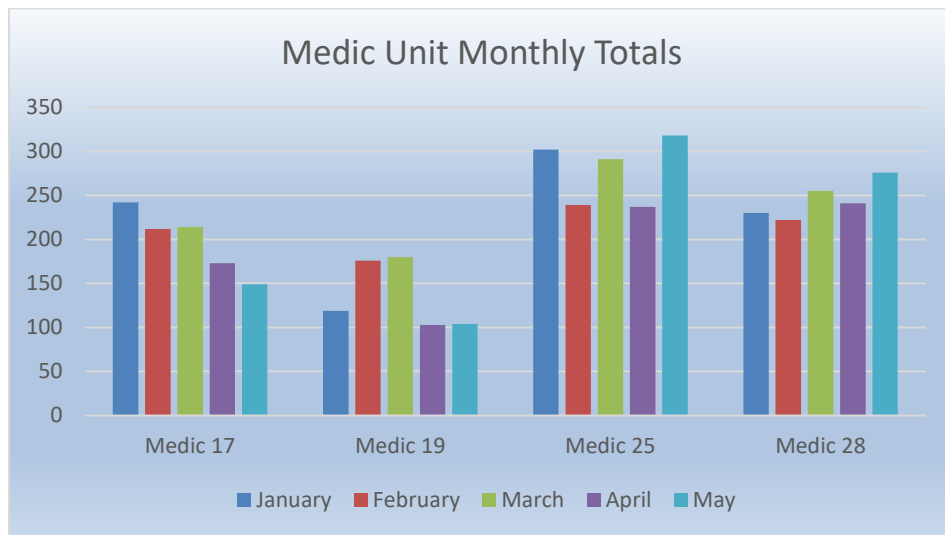
Total Responses for Engine Companies: 680





## El Dorado County Fire Protection District

Total Responses for Medic Units: 847





## El Dorado County Fire Protection District

---

Station 17 Run Review May 2022

**ENGINE 17: 122 Total Calls**

Medical Aid- 84

Fire- 3

Traffic Collision- 10

Public Assist- 7

Misc.- 14

Move/Cover - 4

**MEDIC 17: 149 Total Calls**

Medical Aid- 133

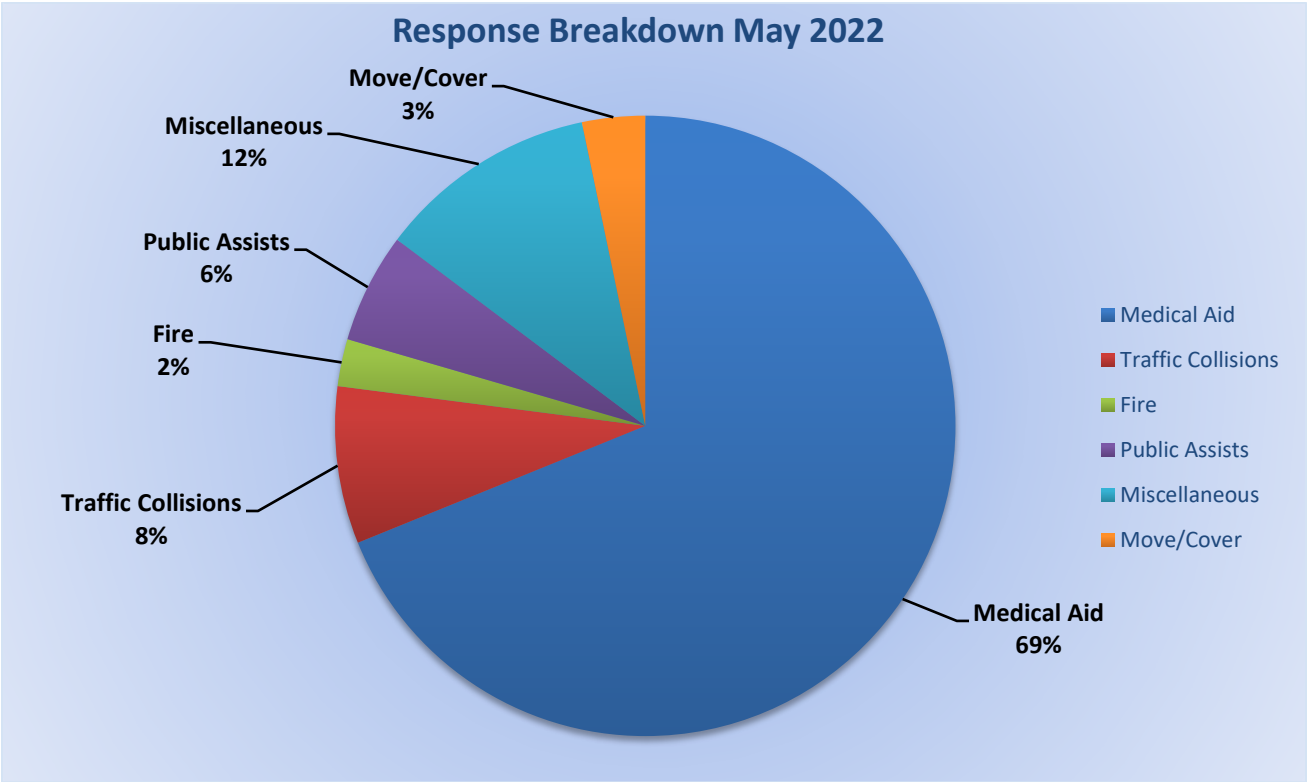
Fire- 2

Traffic Collision- 10

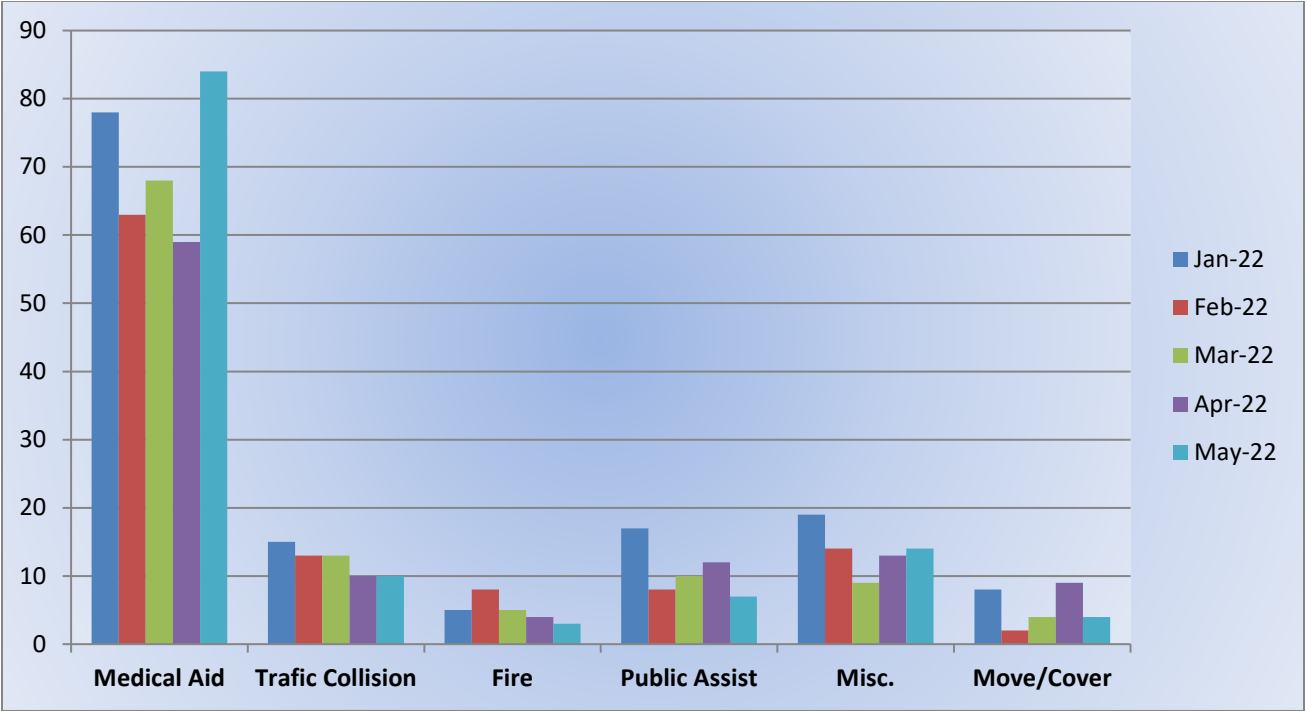
Transfer- 1

Misc-4

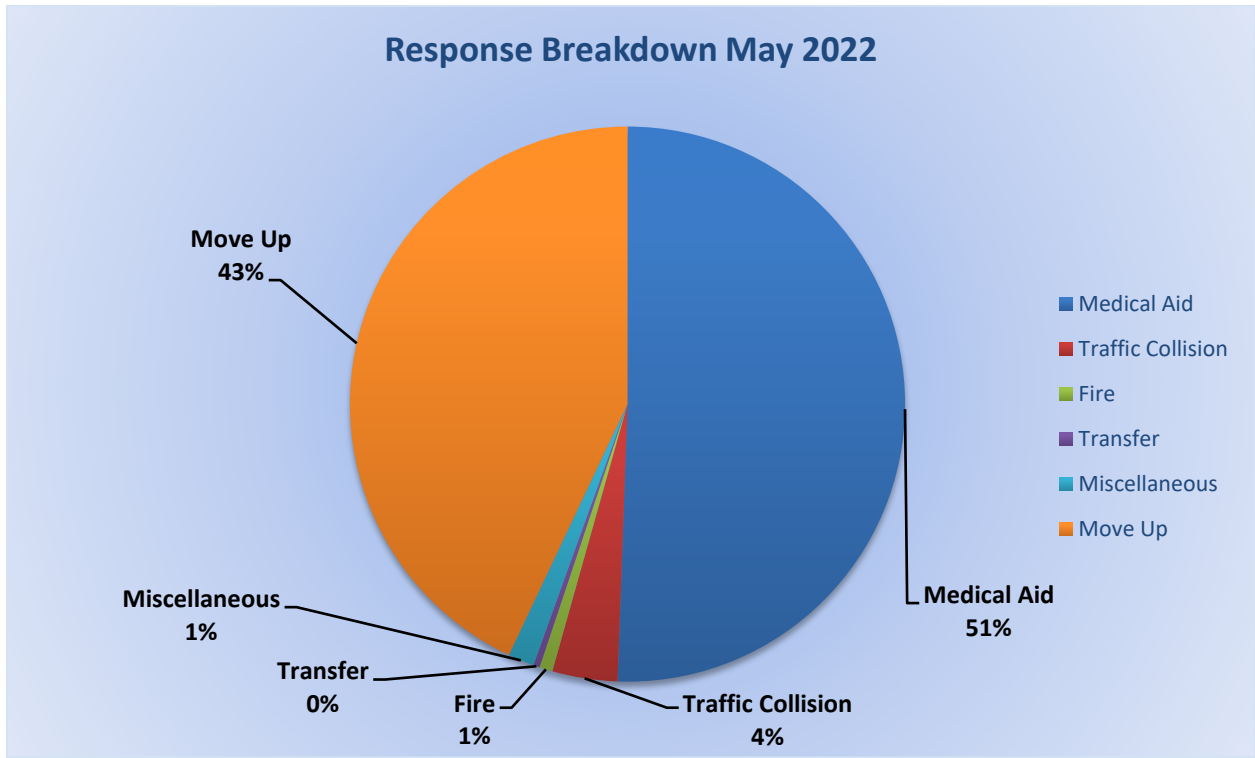
Move/Cover - 113



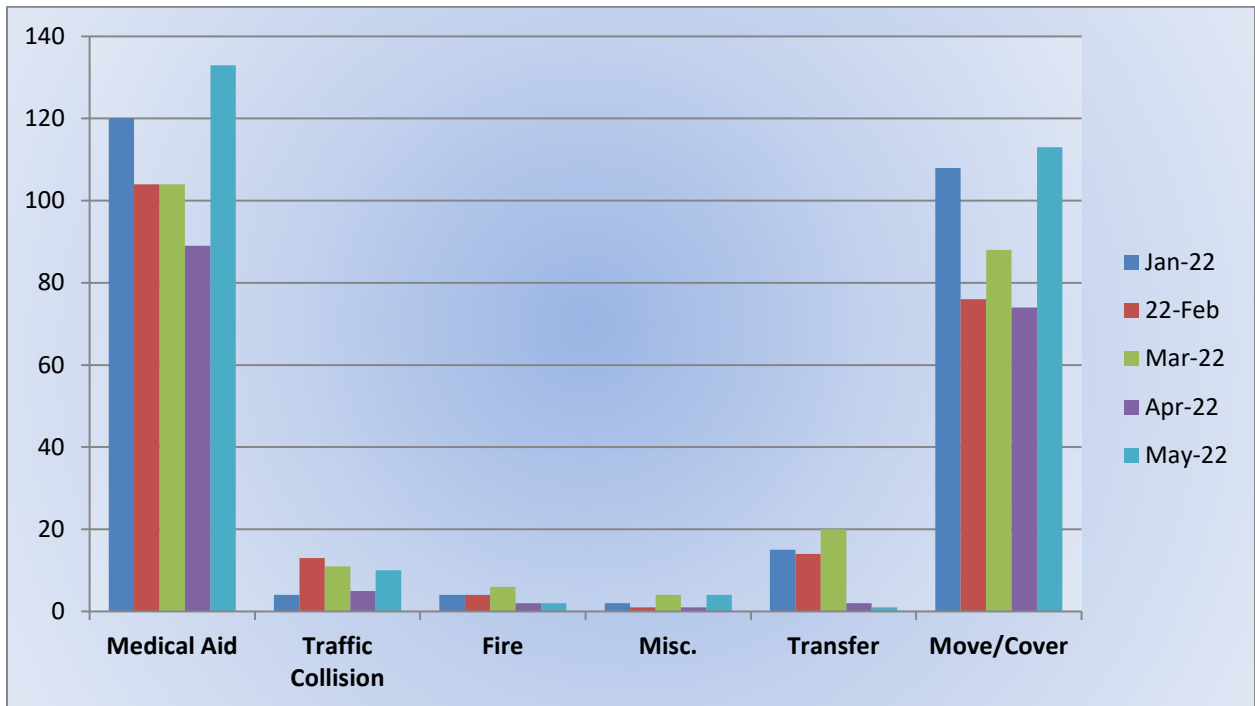
**E17 Monthly Statistics Comparison**



### Response Breakdown May 2022



### M17 Monthly Statistics Comparison





## El Dorado County Fire Protection District

---

Station 19 Run Review May 2022

**ENGINE 19:** 73 Total Calls

Medical Aid - 38

Fire - 5

Traffic Collision - 10

Public Assist - 6

Misc - 4

Move/Cover - 9

**MEDIC 19:** 104 Total Calls

Medical Aid- 88

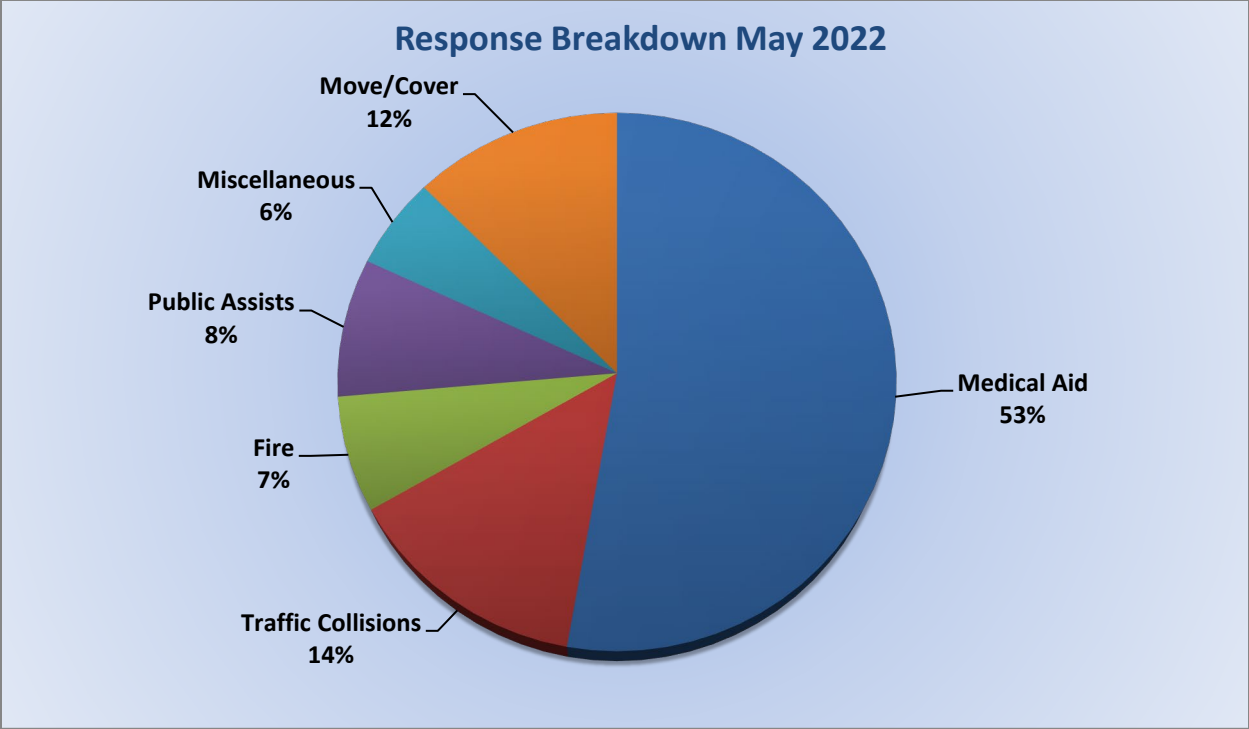
Fire- 3

Traffic Collision- 11

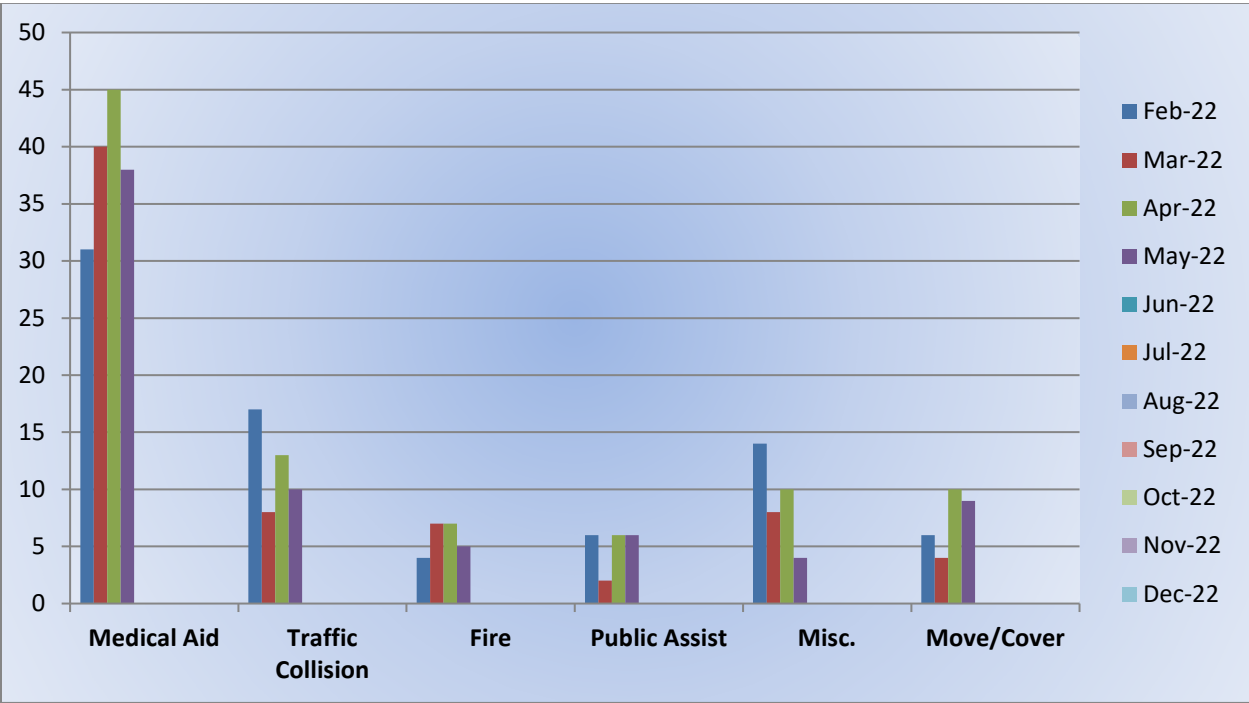
Transfer- 3

Misc- 2

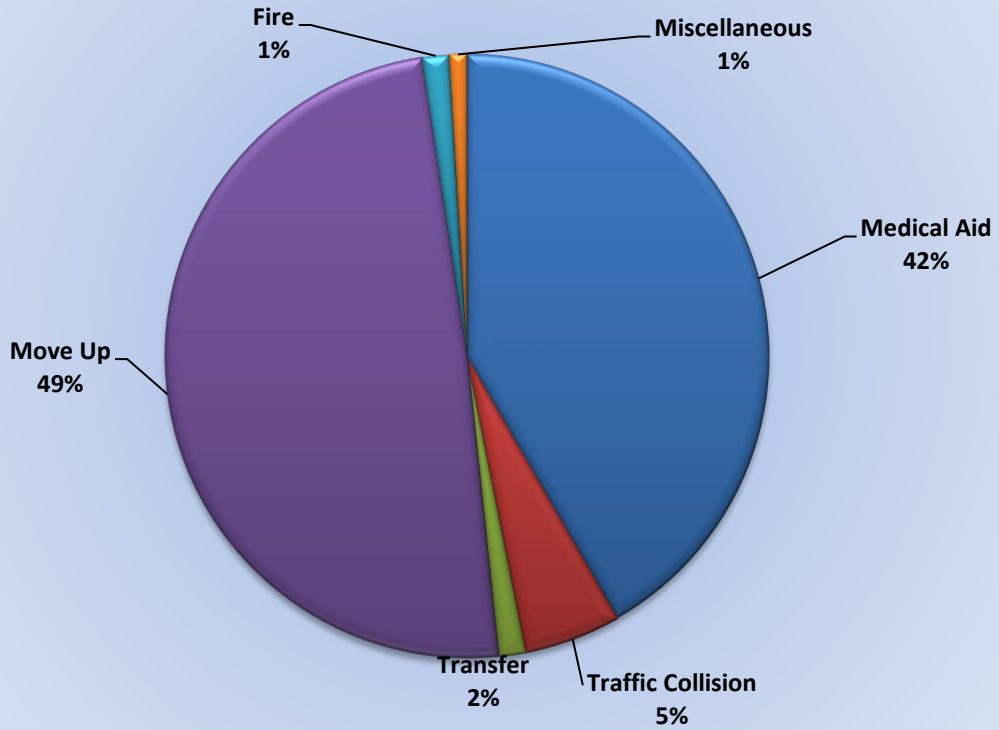
Move/Cover - 104



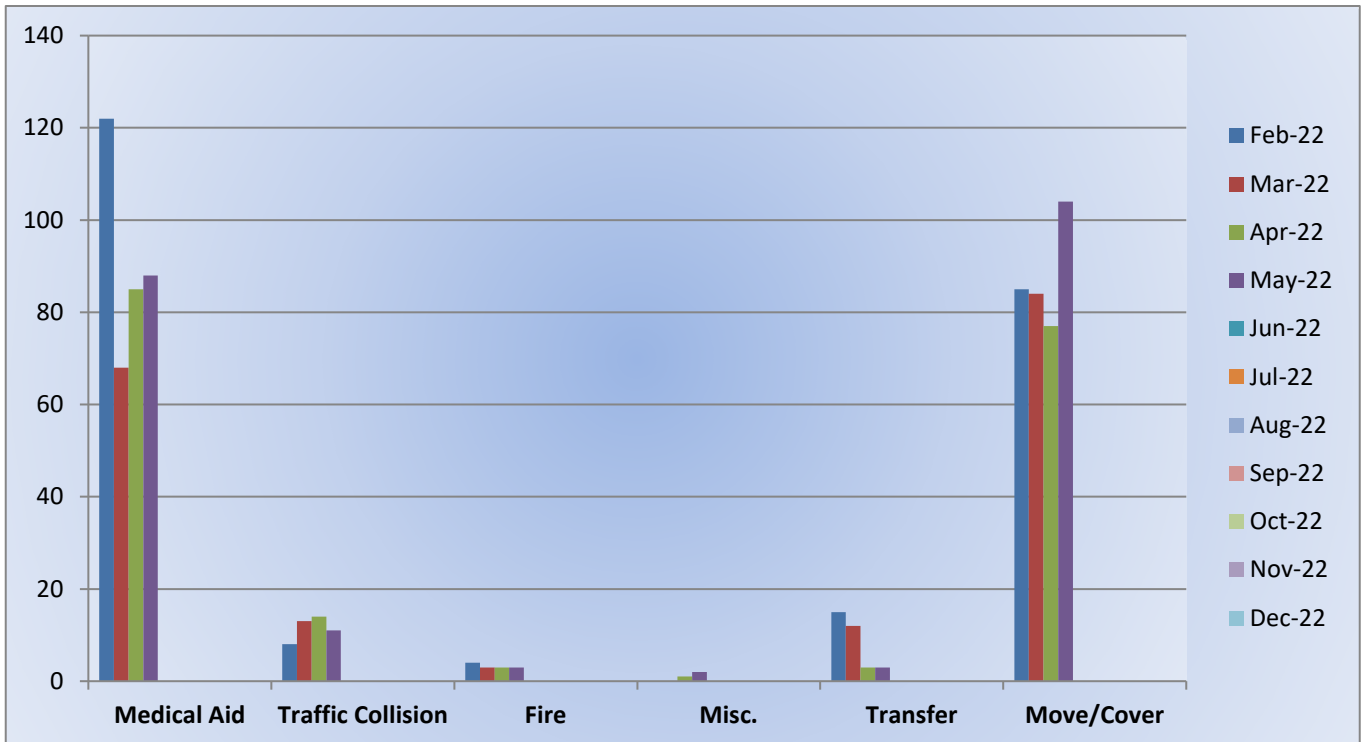
### E19 Monthly Statistics Comparison



### Response Breakdown May 2022



### M19 Monthly Statistics Comparison







## El Dorado County Fire Protection District

---

### Station 25 Run Review May 2022

#### **ENGINE 25: 299 Total Calls**

Medical Aid- 229

Fire- 8

Traffic Collision- 17

Public Assist- 22

Misc- 21

Move/Cover - 2

#### **MEDIC 25: 318 Total Calls**

Medical Aid- 234

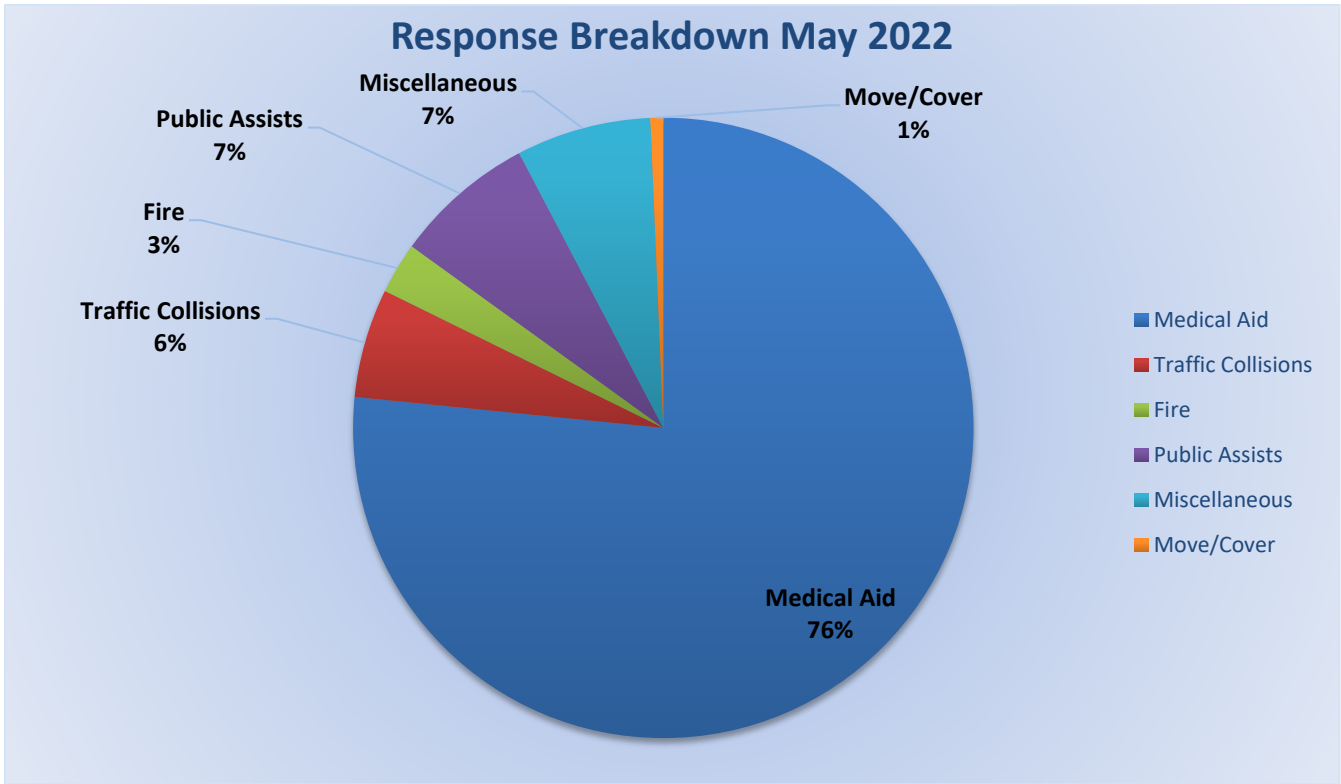
Fire- 8

Traffic Collision- 17

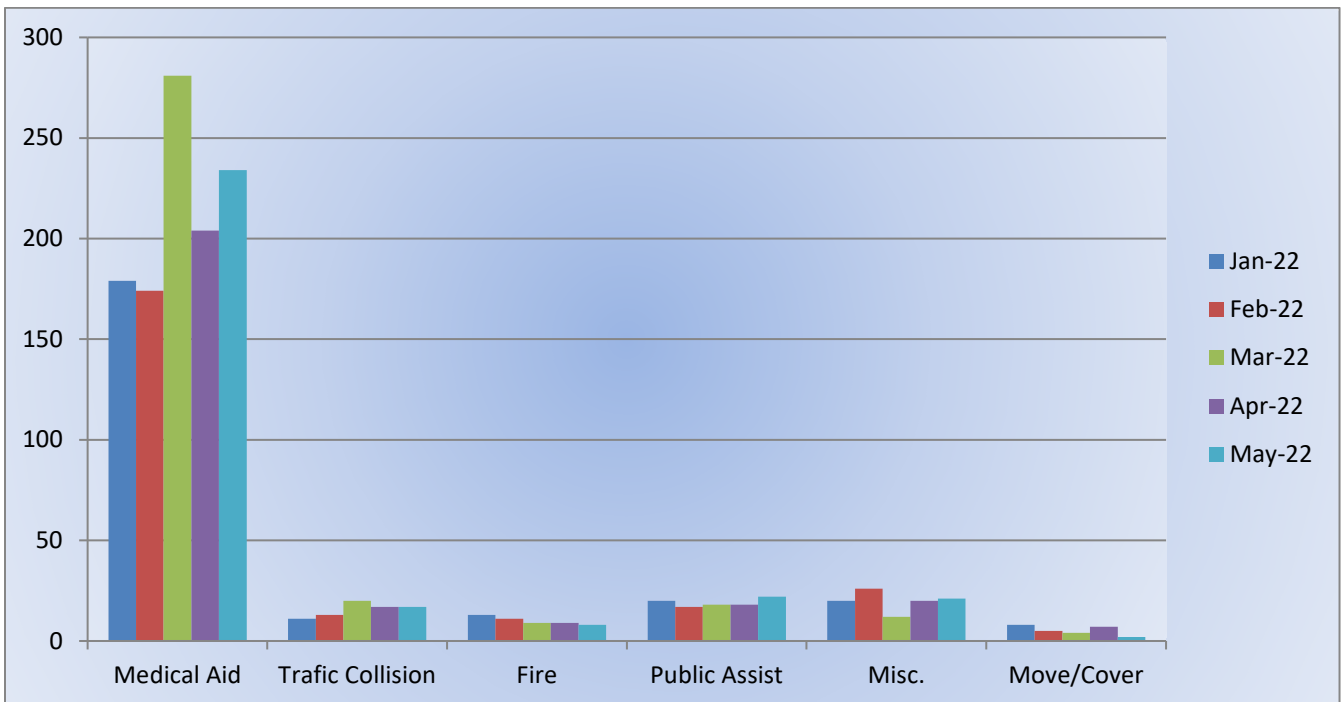
Transfer- 21

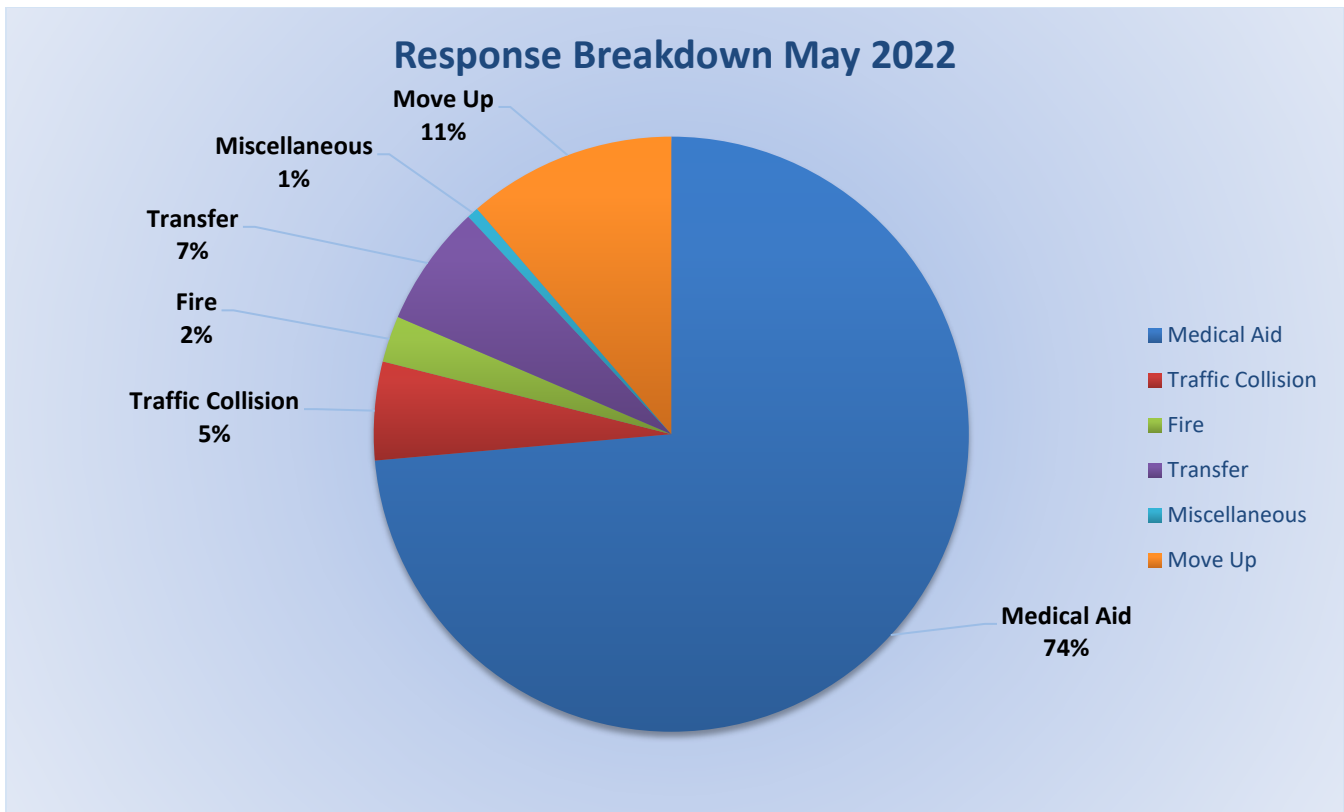
Misc- 2

Move/Cover - 36

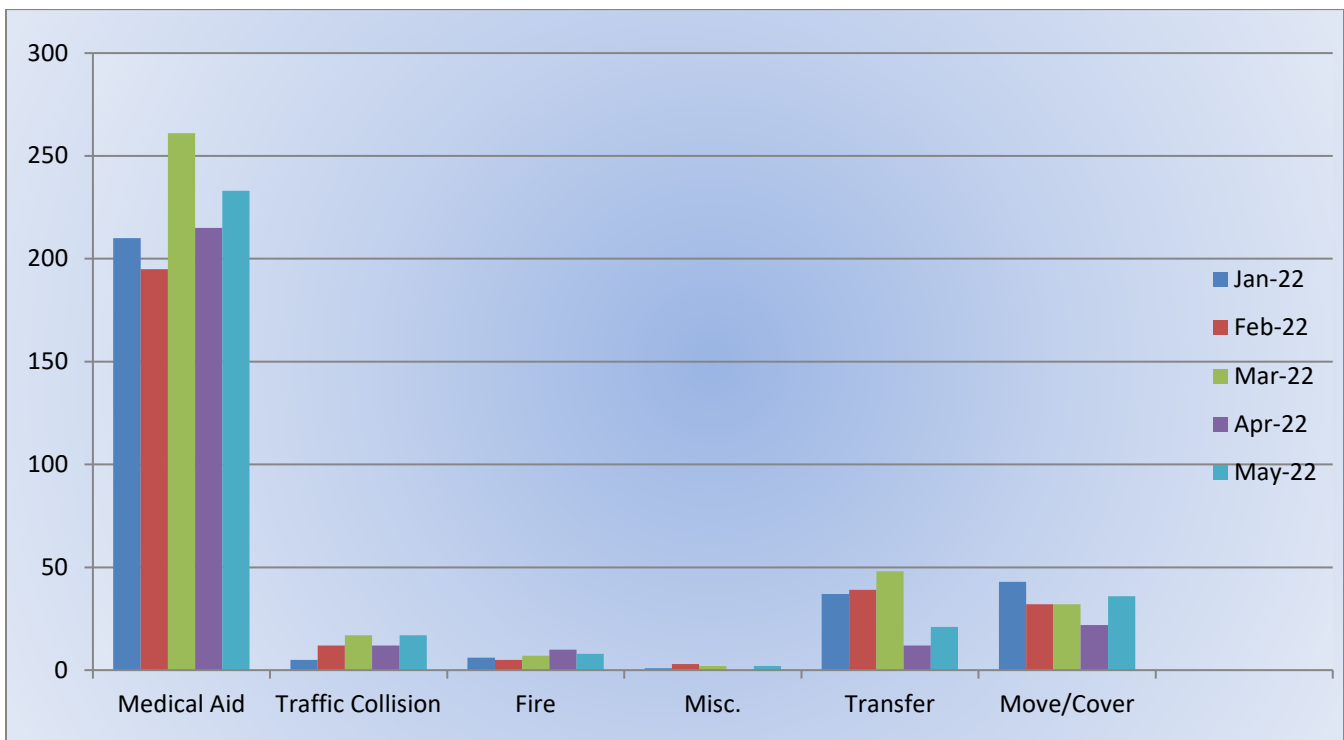


**E25 Monthly Statistics Comparison**





**M25 Monthly Statistics Comparison**





## El Dorado County Fire Protection District

---

Station 28 Run Review May 2022

**ENGINE 28:** 136 Total Calls

Medical Aid - 78

Fire - 5

Traffic Collision - 15

Public Assist - 8

Misc - 13

Move/Cover - 17

**MEDIC 28:** 276 Total Calls

Medical Aid- 178

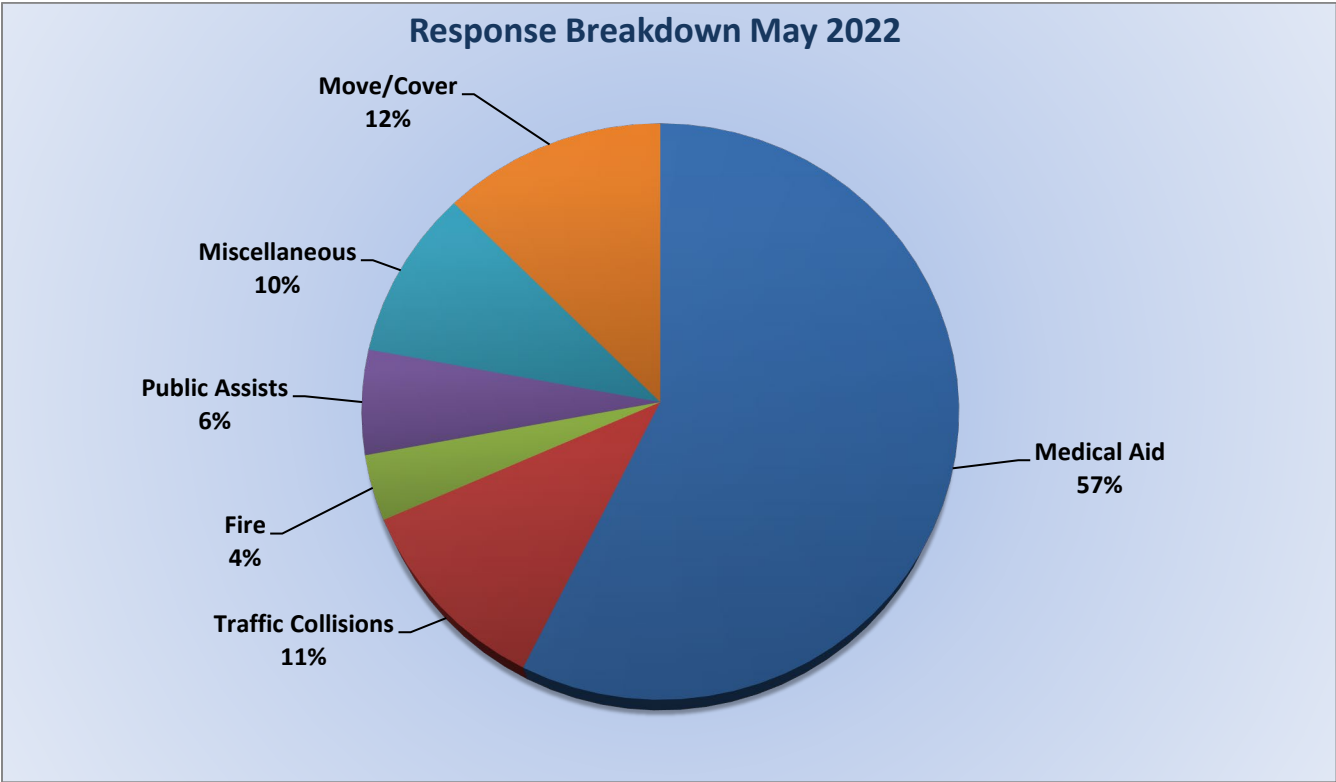
Fire- 8

Traffic Collision- 14

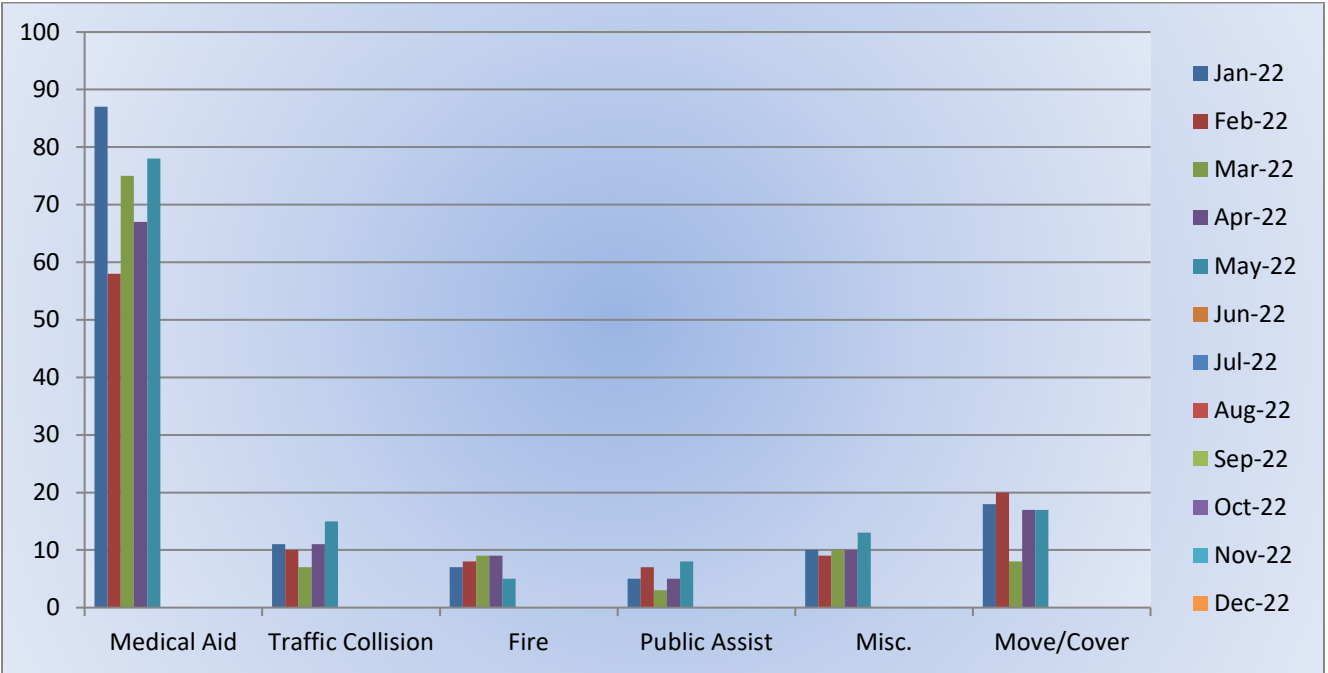
Transfer- 4

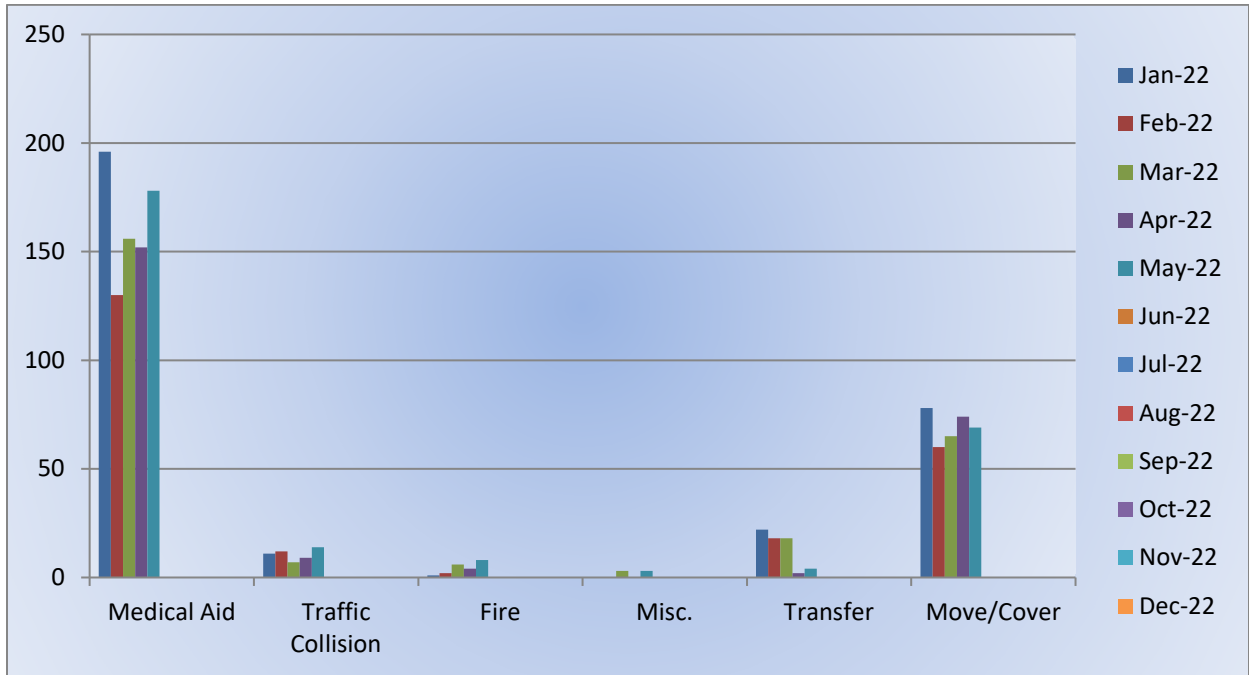
Misc- 3

Move/Cover - 69

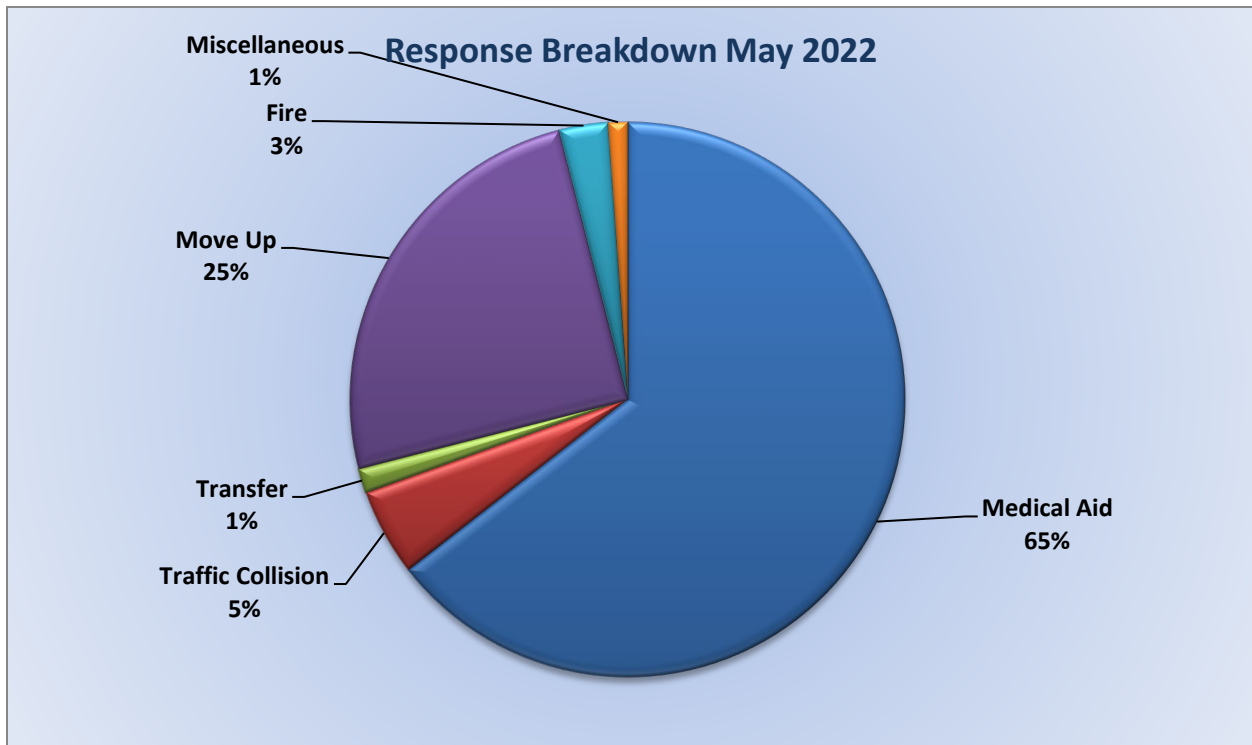


### E28 Monthly Statistics Comparison





### M28 Monthly Statistics Comparison





## El Dorado County Fire Protection District

---

Station 72 Run Review May 2022

**ENGINE 72:** 50 Total Calls

Medical Aid- 36

Fire- 3

Traffic Collision- 6

Rescues- 4

Public Assist- 4

Misc- 4

Move/Cover - 0

