



# El Dorado County Fire Protection District



December 2025

## Run Statistics – Engines & Medics

### Engine Companies:

Engine 17: 89

Engine 19: 66

Engine 25: 271

Engine 28: 122

Engine 72: 47

**Total Responses: 595**

### Medic Units:

Medic 17: 250

Medic 19: 279

Medic 25: 272

Medic 28: 325

Medic 49: 276

**Total Responses: 1,402**

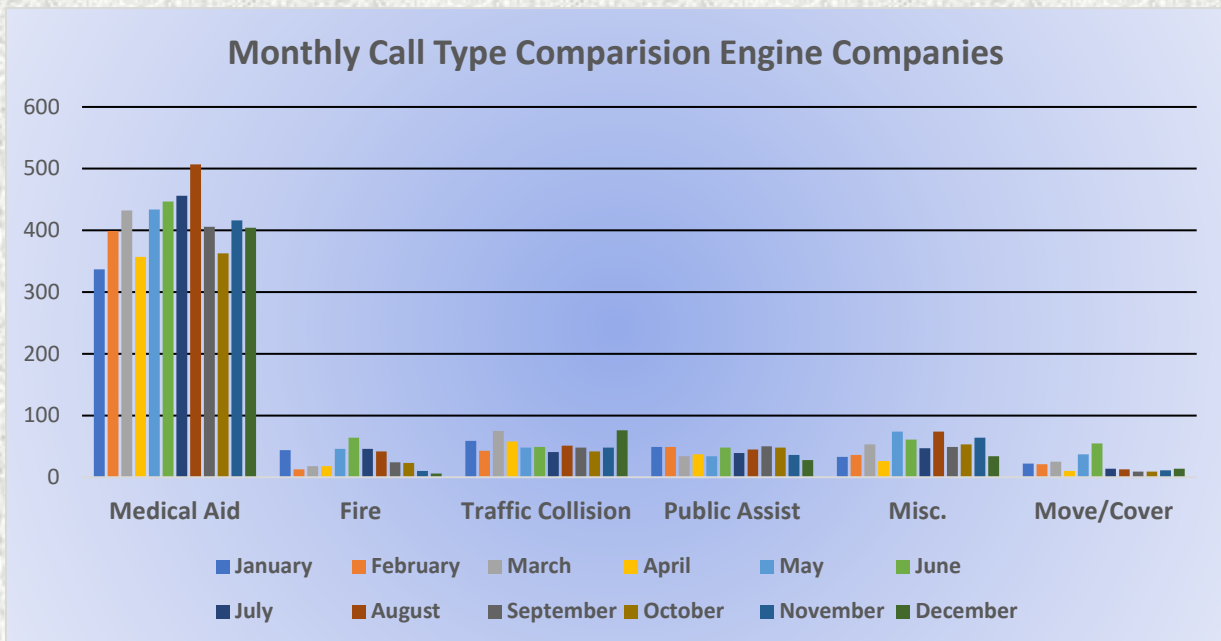
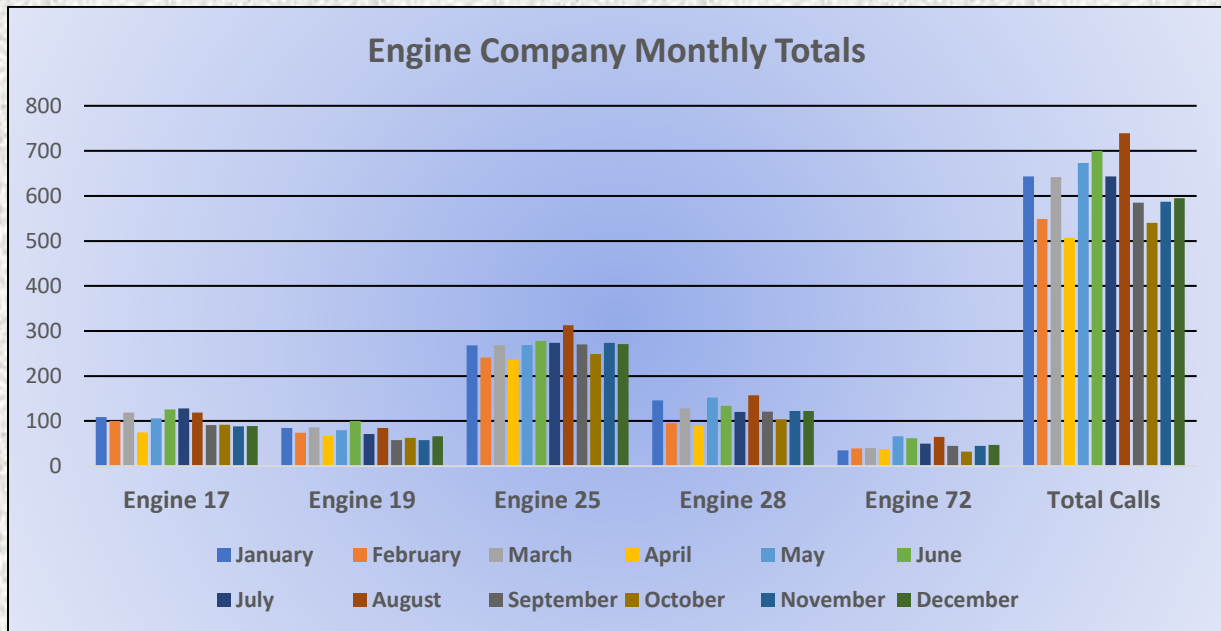




# El Dorado County Fire Protection District



## Monthly Run Statistics and Yearly Comparison December 2025 Engine Companies and Medic Units

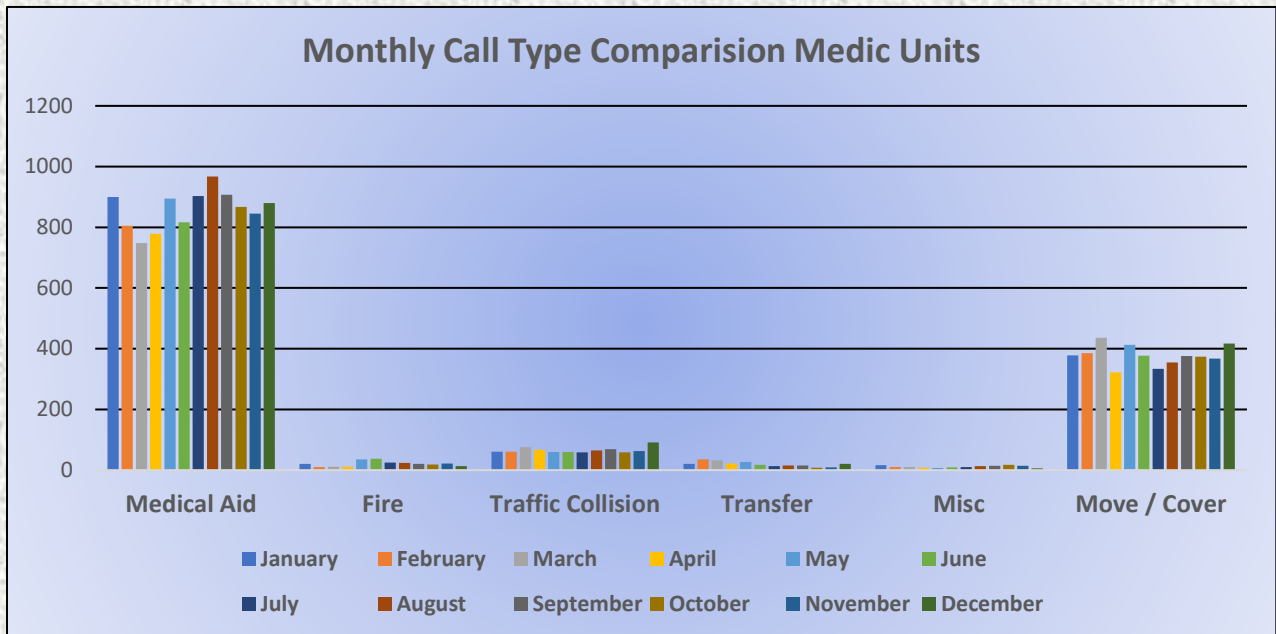
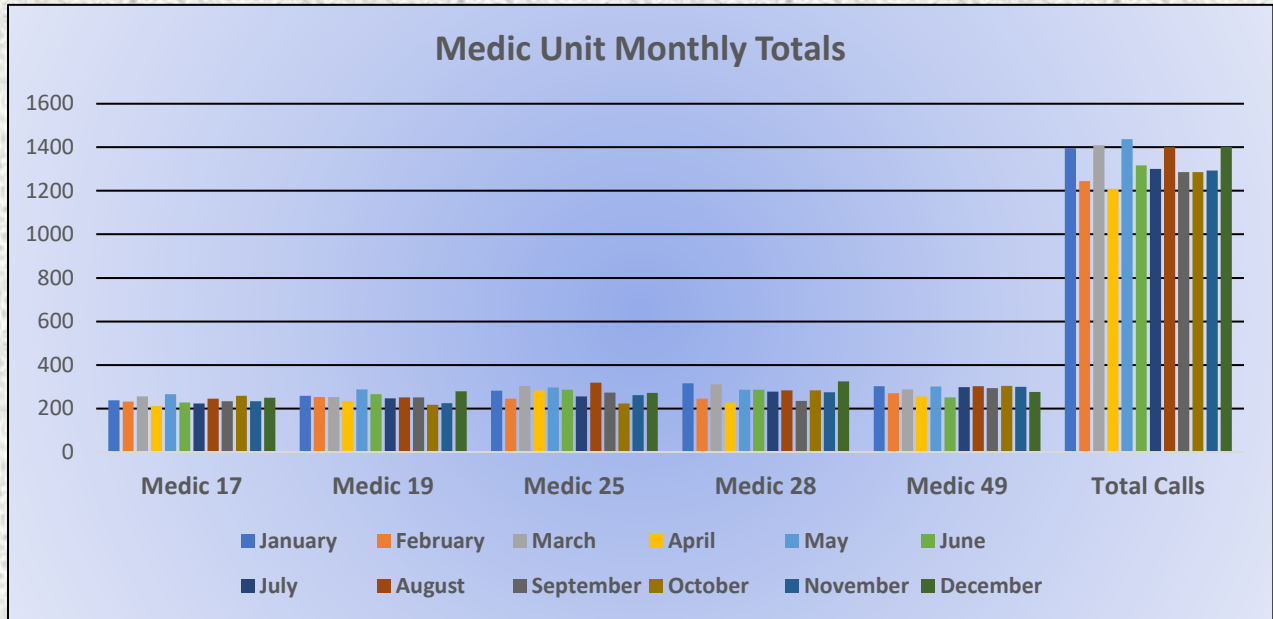




# El Dorado County Fire Protection District



## Monthly Run Statistics and Yearly Comparison December 2025 Engine Companies and Medic Units

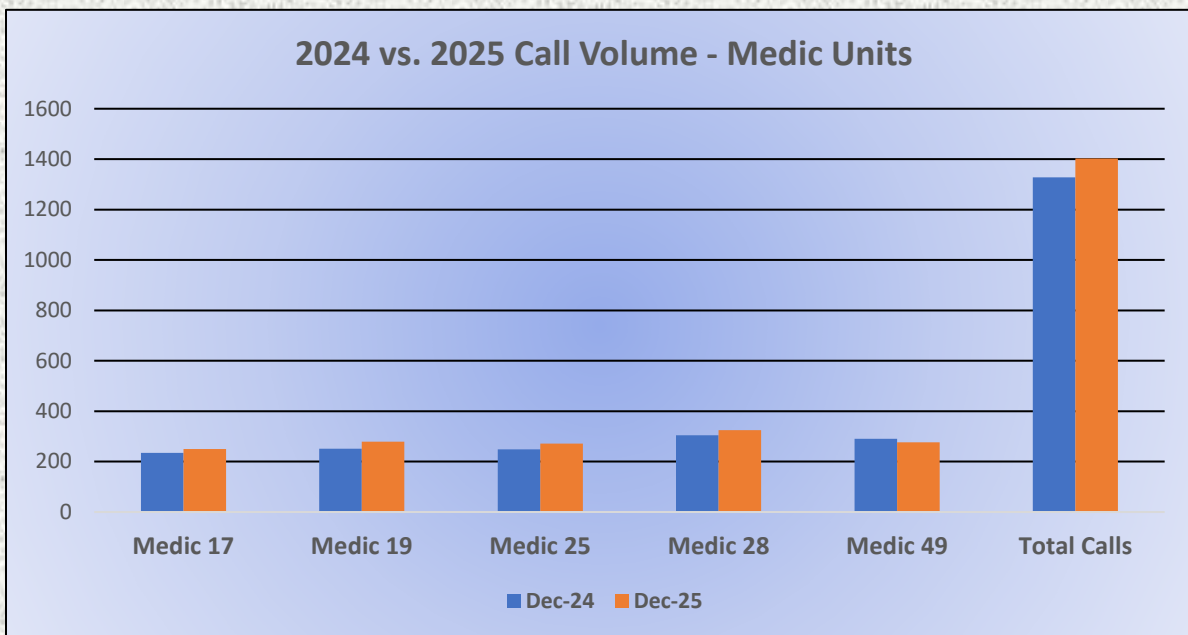
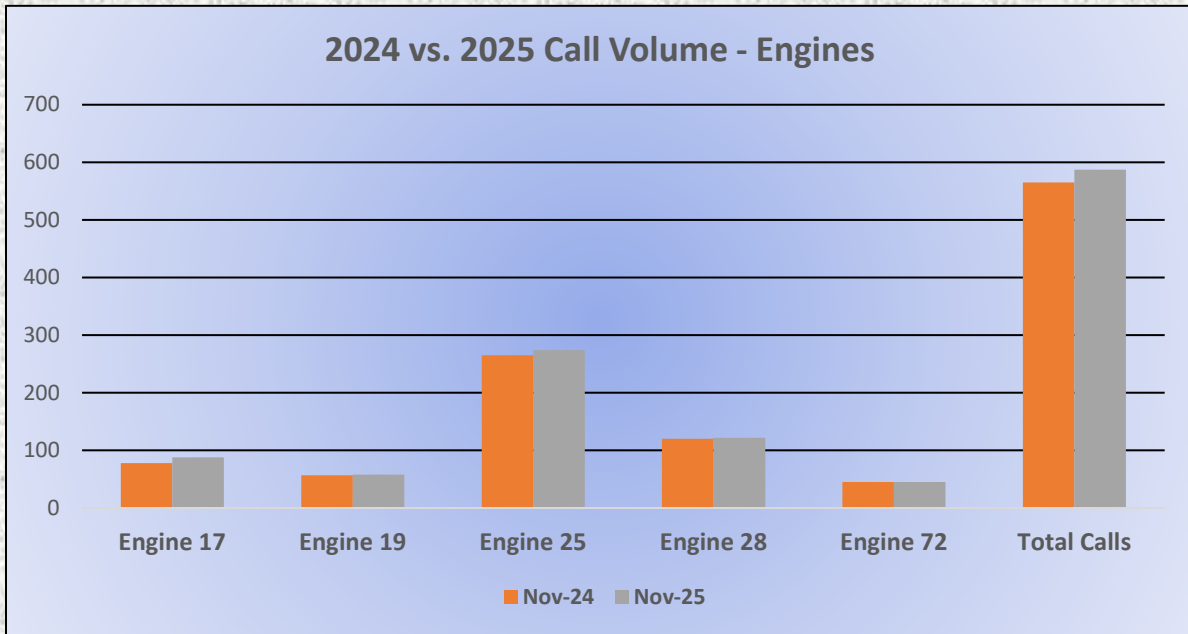




# El Dorado County Fire Protection District



## Yearly Comparison December 2025





# El Dorado County Fire Protection District Driver Notifications



**December 1 - December 31, 2025**  
YTD January 1 - December 31  
Lifetime Since June 2021

CA - El Dorado County Fire Protection District  
Safety Cloud® Report

## Alert Totals

**Drivers Alerted**

**1,787**

YTD 20,307  
Lifetime 65,129

**R2R Alerts sent**

**0**

YTD 0  
Lifetime 0

**R2R Alerts Received**

**0**

YTD 0  
Lifetime 0

## Incident Totals

**Total Incidents**

**89**

YTD 1,602  
Lifetime 2,727

**Average Time On-Scene**

**20.4 min**

YTD 19.9 min  
Lifetime 45.0 min

## Run Totals

**Total Runs**

**268**

YTD 4,873  
Lifetime 8,163

**Total Responding Time**

**1,066 min**

YTD 19,707 min  
Lifetime 33,456 min

**Average Time-to-Scene**

**4.0 min**

YTD 4.0 min  
Lifetime 4.1 min

### Drivers Alerted

Total drivers alerted; based on HAAS Alert enabled applications.

### Average Time On-Scene

Average time duration per incident.

### R2R Alerts Sent

Total number of Responder-to-Responder Alerts sent to nearby emergency vehicles.

### Total Runs

Total times a vehicle was dispatched to an incident with lights engaged for at least 1+ minute.

### R2R Alerts Received

Total number of Responder-to-Responder Alerts received by your emergency vehicles.

### Total Responding Time

Total time vehicles/apparatus spent traveling to dispatched calls with lights engaged.

### Total Incidents

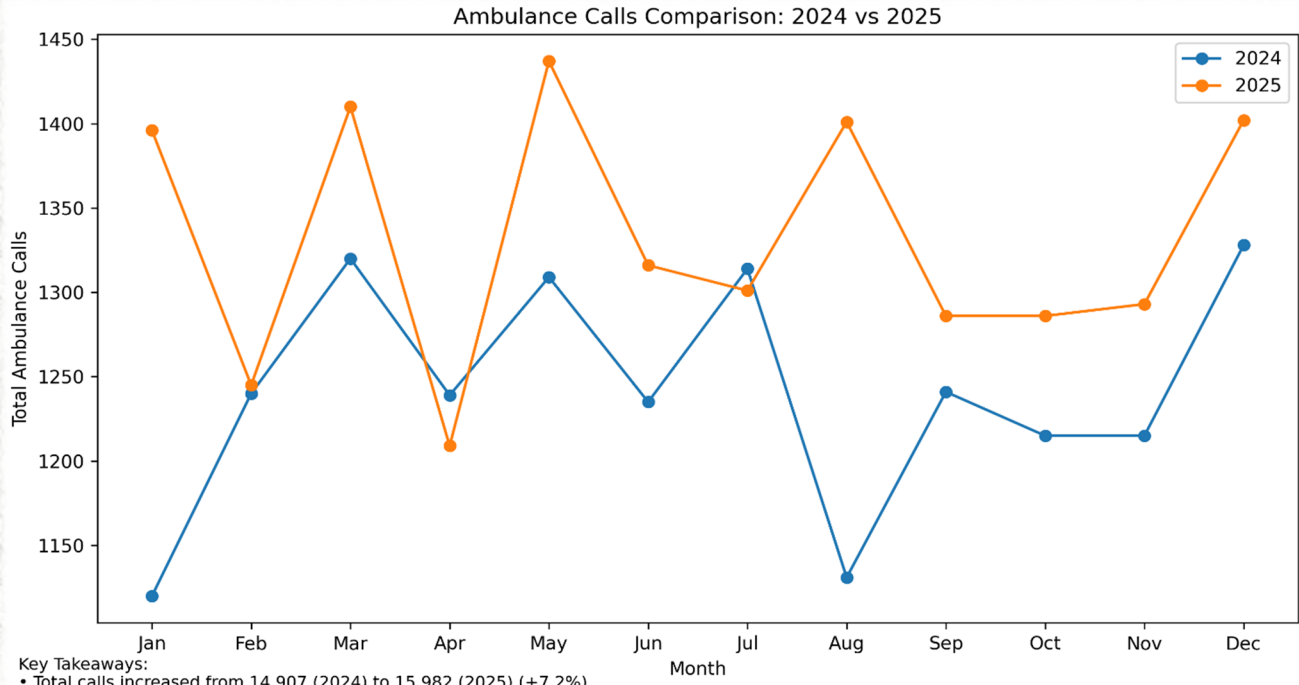
Total number of times at least one vehicle arrived on-scene with lights engaged for 2+ minutes.

### Average Time-to-Scene

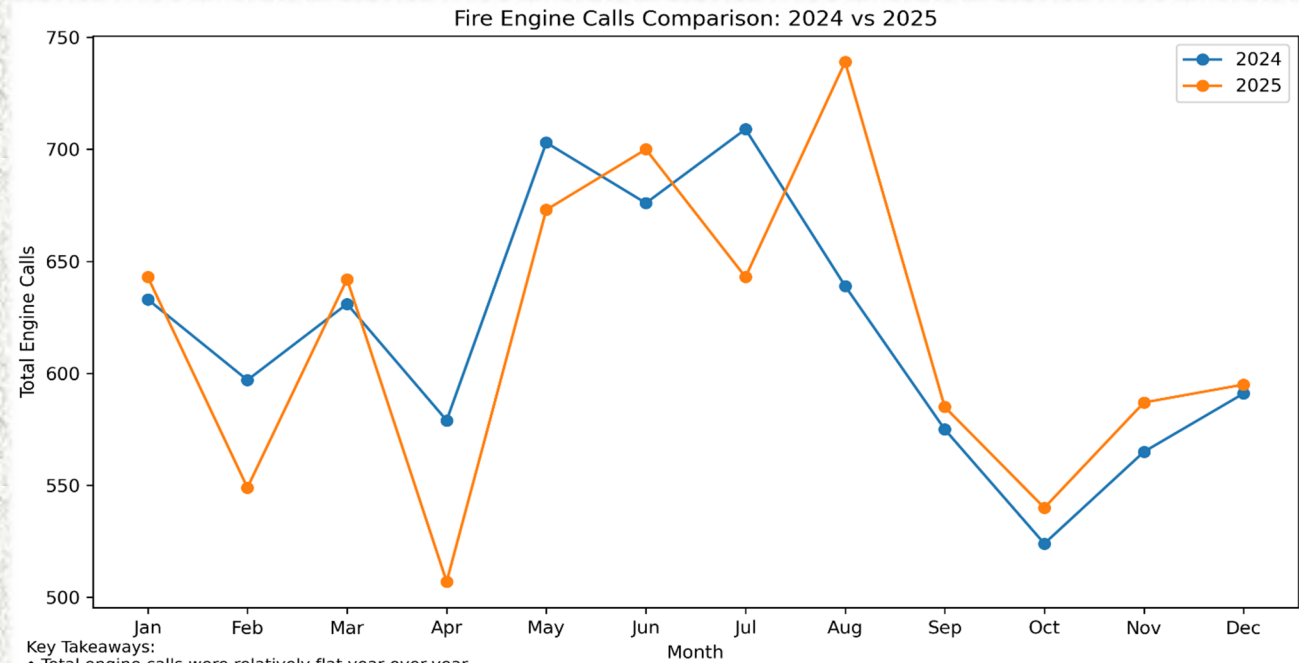
Average time it took for dispatched vehicle to arrive on-scene.



# Calls for Service 2024 vs. 2025



- Key Takeaways:**
- Total calls increased from 14,907 (2024) to 15,982 (2025) (+7.2%)
  - 2025 call volume exceeded 2024 in 10 of 12 months
  - Notable increases in Jan, Mar, May, Aug, and Dec
  - Indicates sustained and growing EMS demand



- Key Takeaways:**
- Total engine calls were relatively flat year-over-year
  - 2024 total: 7,422 calls | 2025 total: 7,403 calls (-0.3%)
  - 2025 exceeded 2024 during peak summer months (Jun-Aug)
  - Overall engine workload remained stable compared to EMS growth



# El Dorado County Fire Protection District



## *Station 25 Run Statistics December 2025*

### **ENGINE 25: 271 Total Calls**

Medical Aid- 208

Fire- 0

Traffic Collision- 18

Public Assist – 17

Misc. – 18

Move/Cover– 0

### **MEDIC 25: 272 Total Calls**

Medical Aid- 237

Fire- 0

Traffic Collision- 19

Transfer 11

Misc.- 2

Move/Cover – 27



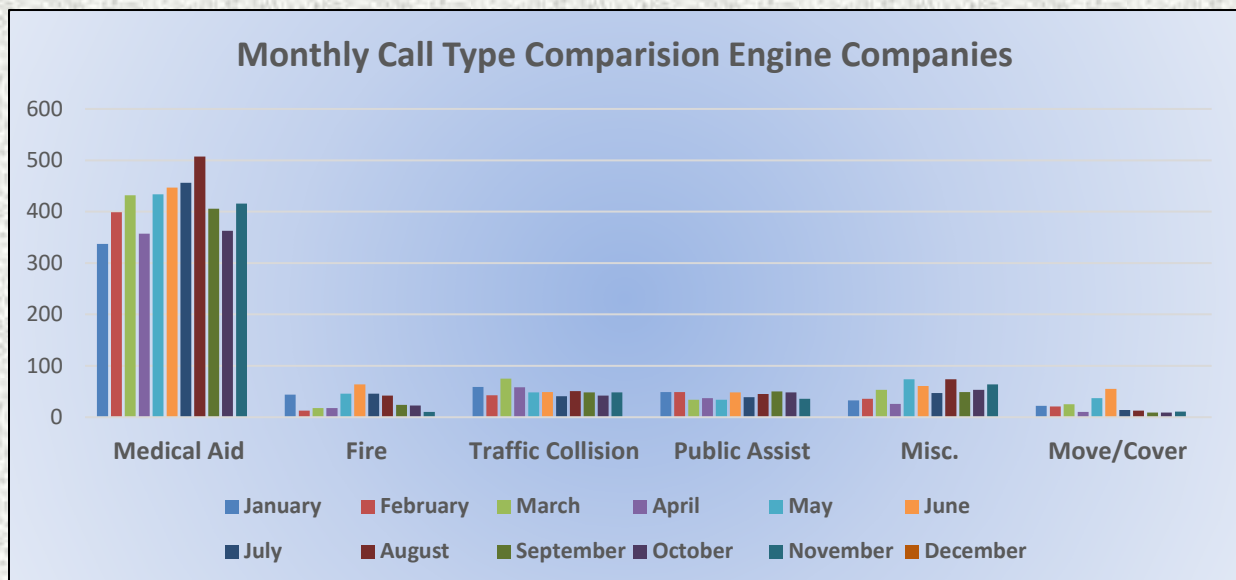
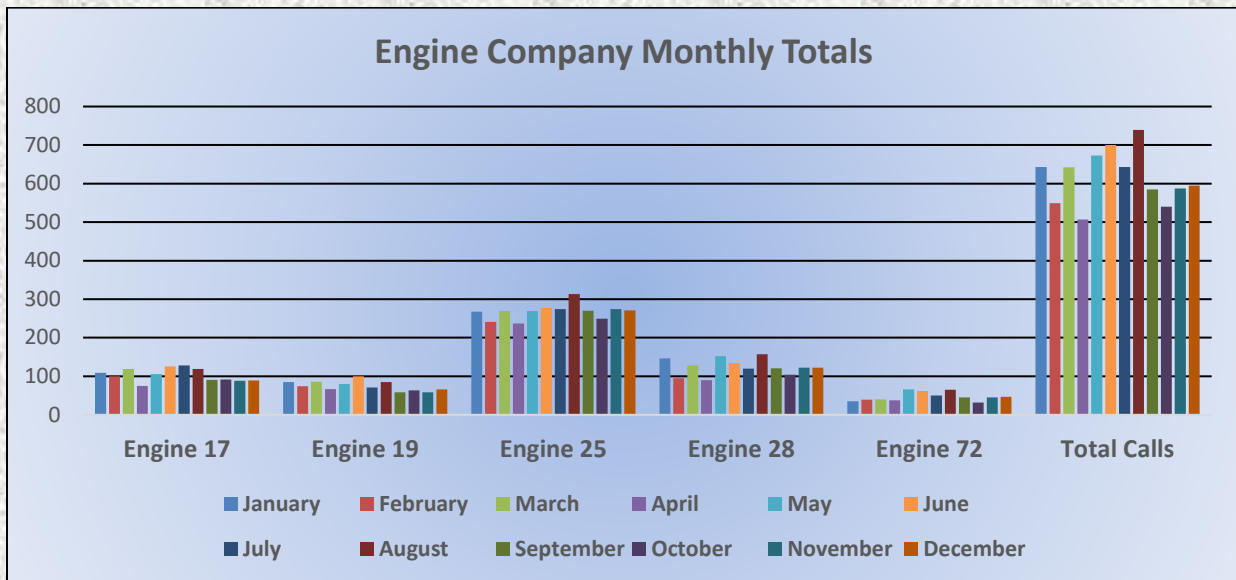


# El Dorado County Fire Protection District



## Monthly Run Statistics and Call Break Down December 2025 Engine Companies and Medic Units

Total Responses for Engine Companies: 595

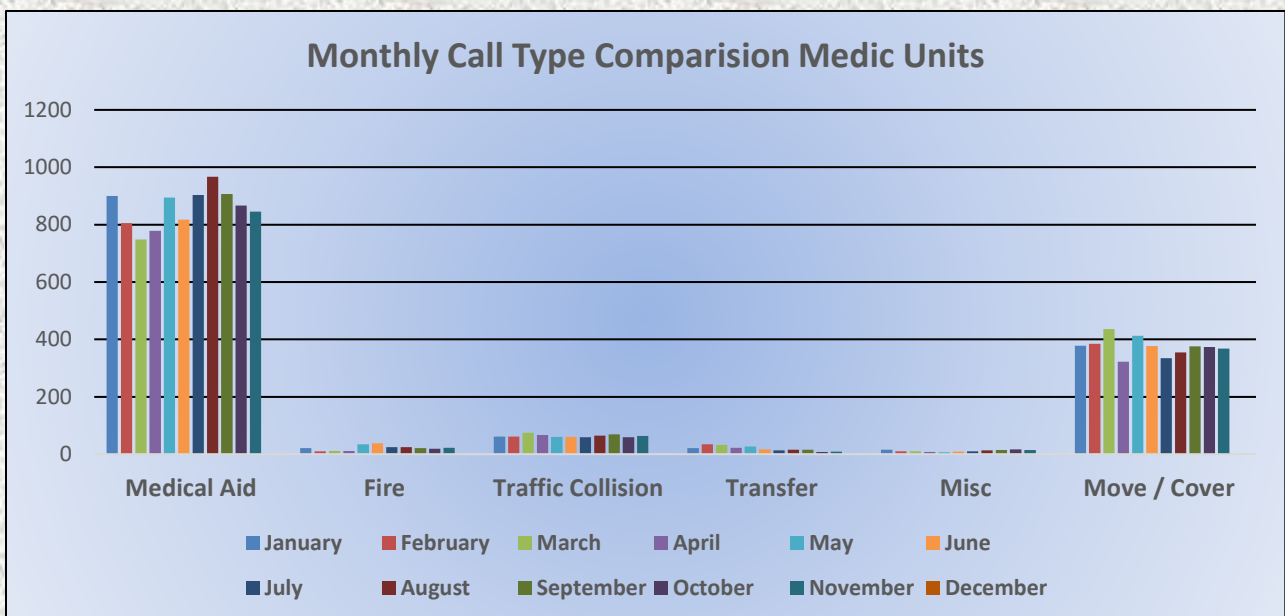
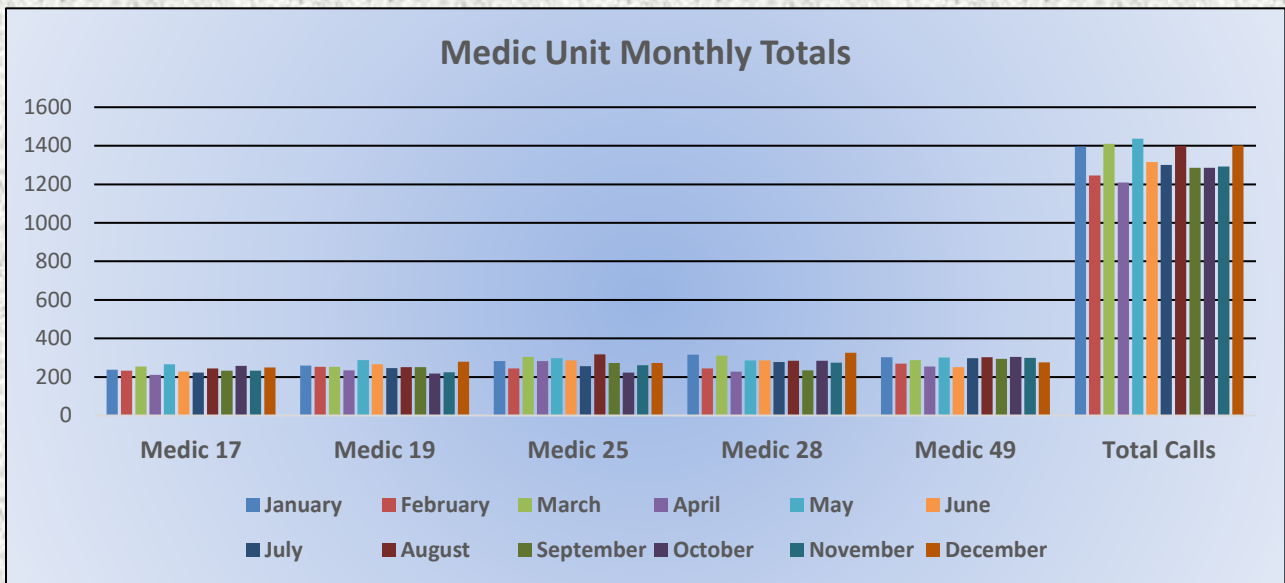




# El Dorado County Fire Protection District



Total Responses for Medic Units: 1,402





# El Dorado County Fire Protection District Driver Notifications



**December 1 - December 31, 2025**  
YTD January 1 - December 31  
Lifetime Since June 2021

CA - El Dorado County Fire Protection District  
Safety Cloud® Report

## Alert Totals

**Drivers Alerted**

**1,787**

YTD 20,307  
Lifetime 65,129

**R2R Alerts sent**

**0**

YTD 0  
Lifetime 0

**R2R Alerts Received**

**0**

YTD 0  
Lifetime 0

## Incident Totals

**Total Incidents**

**89**

YTD 1,602  
Lifetime 2,727

**Average Time On-Scene**

**20.4 min**

YTD 19.9 min  
Lifetime 45.0 min

## Run Totals

**Total Runs**

**268**

YTD 4,873  
Lifetime 8,163

**Total Responding Time**

**1,066 min**

YTD 19,707 min  
Lifetime 33,456 min

**Average Time-to-Scene**

**4.0 min**

YTD 4.0 min  
Lifetime 4.1 min

### Drivers Alerted

Total drivers alerted; based on HAAS Alert enabled applications.

### Average Time On-Scene

Average time duration per incident.

### R2R Alerts Sent

Total number of Responder-to-Responder Alerts sent to nearby emergency vehicles.

### Total Runs

Total times a vehicle was dispatched to an incident with lights engaged for at least 1+ minute.

### R2R Alerts Received

Total number of Responder-to-Responder Alerts received by your emergency vehicles.

### Total Responding Time

Total time vehicles/apparatus spent traveling to dispatched calls with lights engaged.

### Total Incidents

Total number of times at least one vehicle arrived on-scene with lights engaged for 2+ minutes.

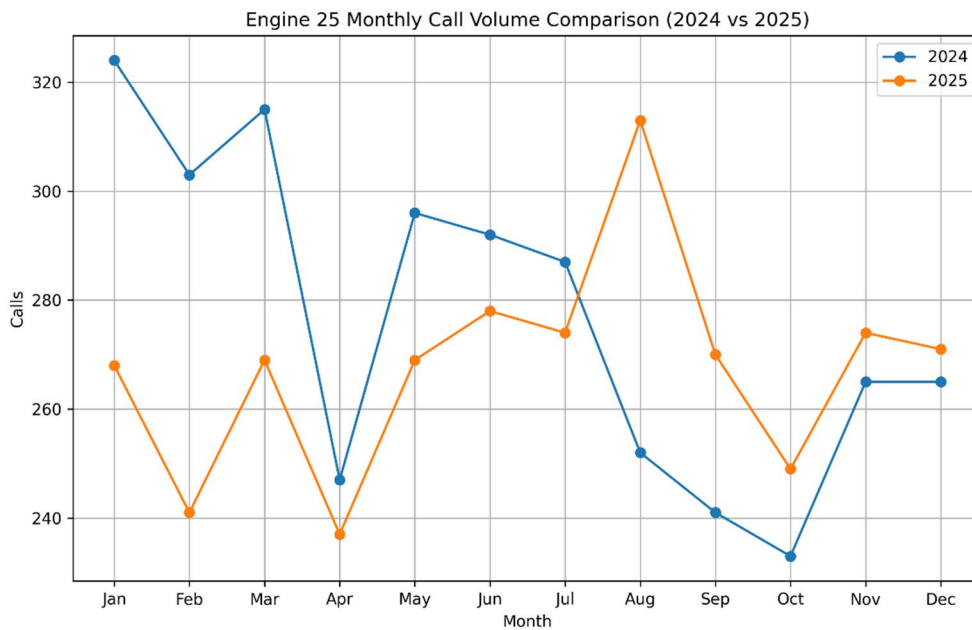
### Average Time-to-Scene

Average time it took for dispatched vehicle to arrive on-scene.



## Engine 25 2024 vs. 2025

### Calls for Service

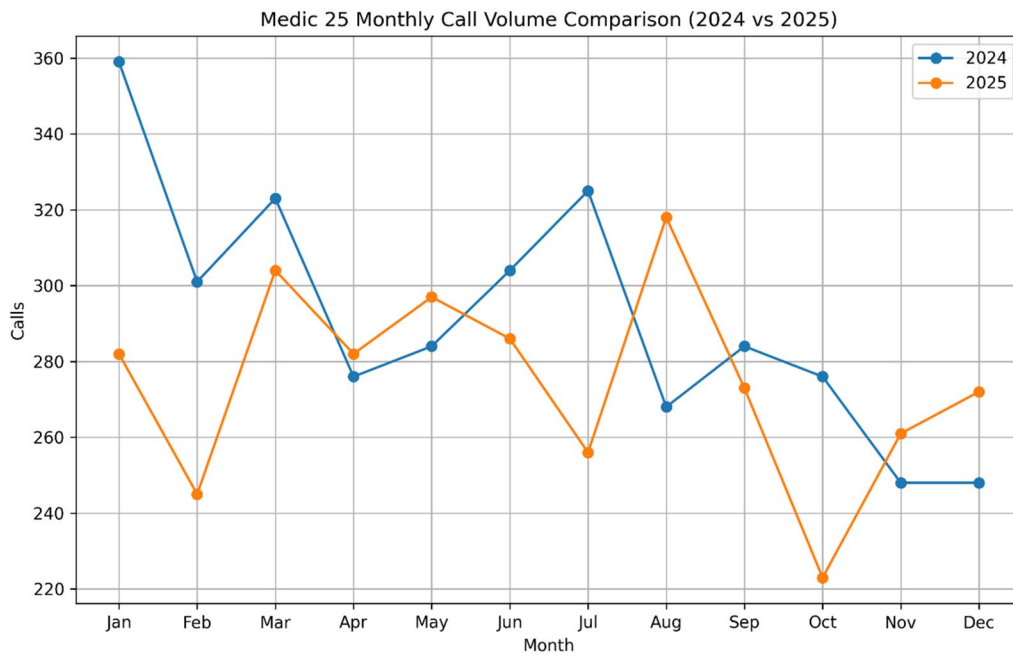


Engine 25 experienced a modest overall decrease in call volume in 2025 compared to 2024, with lower activity in the first half of the year offset by increased demand beginning in August.



# Medic 25 2024 vs. 2025

## Calls for Service

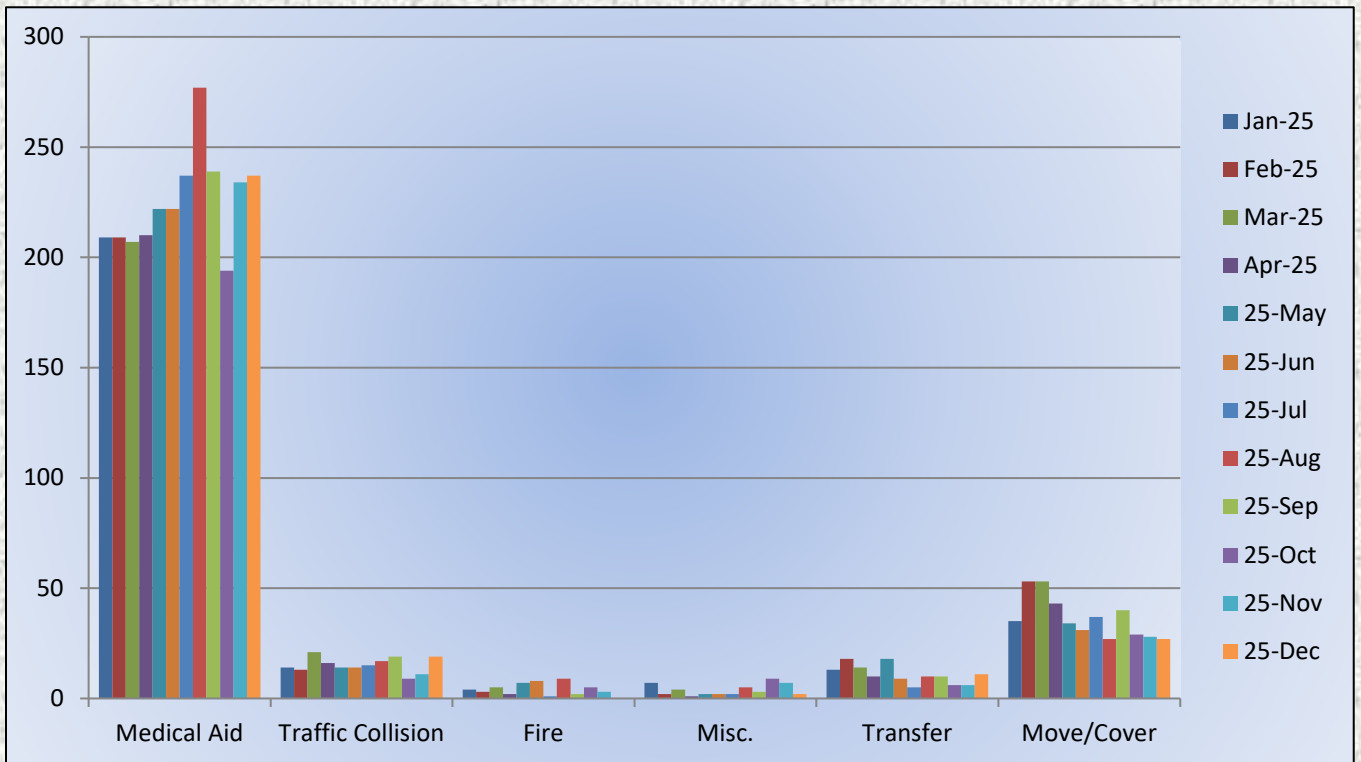
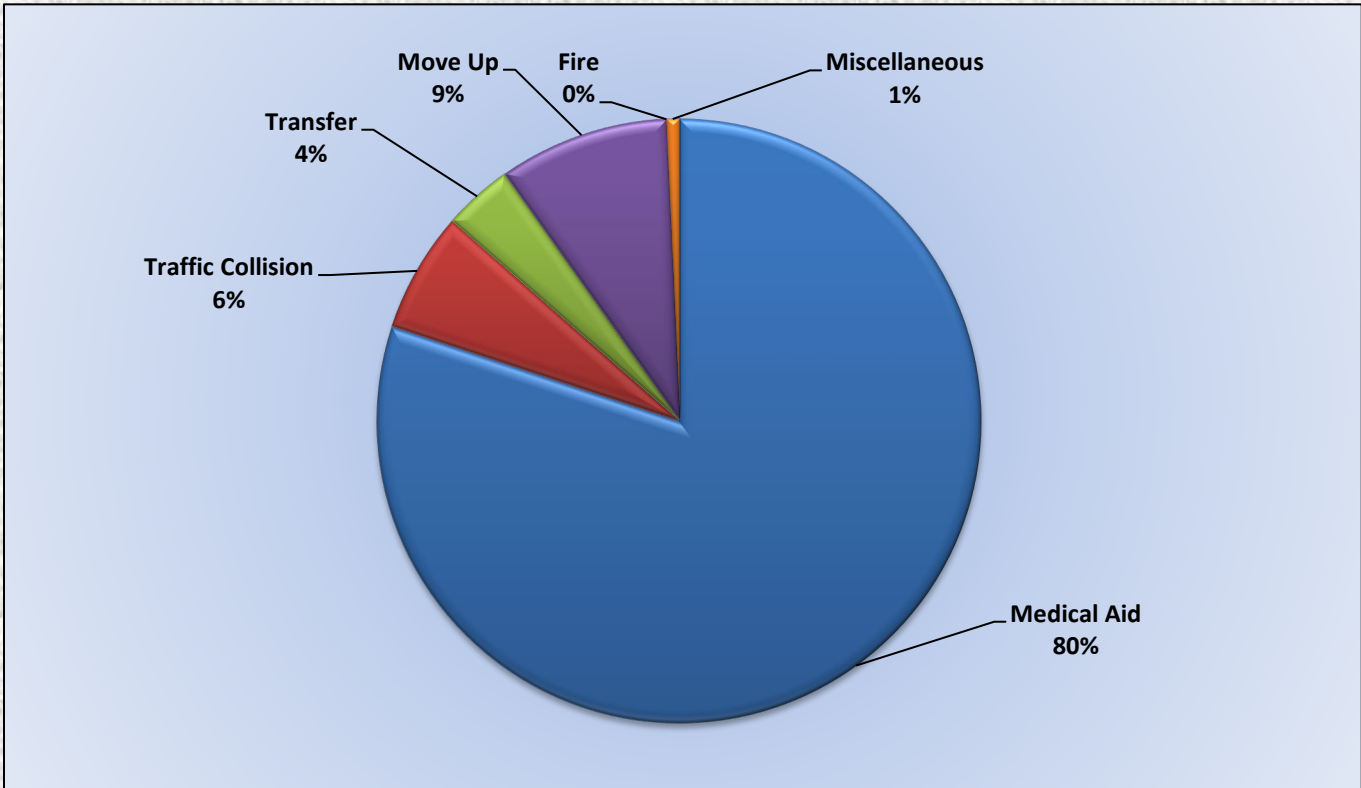


Medic 25 experienced an overall reduction in call volume in 2025 compared to 2024, with lower demand throughout much of the year and a brief increase in activity during late summer.





## Medic 25 Call Volume Breakdown December 2025





## El Dorado County Fire Protection District

---

### Station 17 Run Review December 2025

#### **ENGINE 17:** 89 Total Calls

Medical Aid- 56

Fire- 0

Traffic Collision- 10

Public Assist- 5

Misc- 16

Move/Cover - 2

#### **MEDIC 17:** 250 Total Calls

Medical Aid- 112

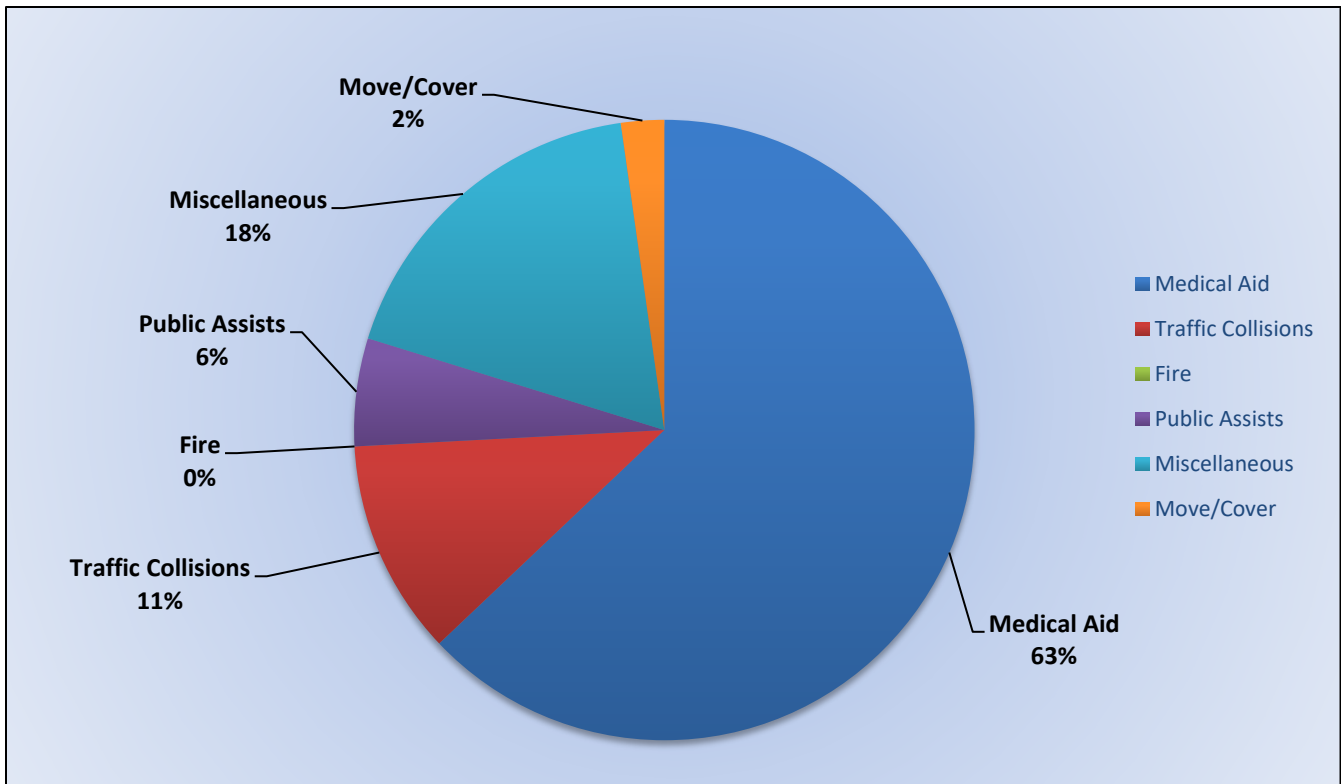
Fire- 0

Traffic Collision- 11

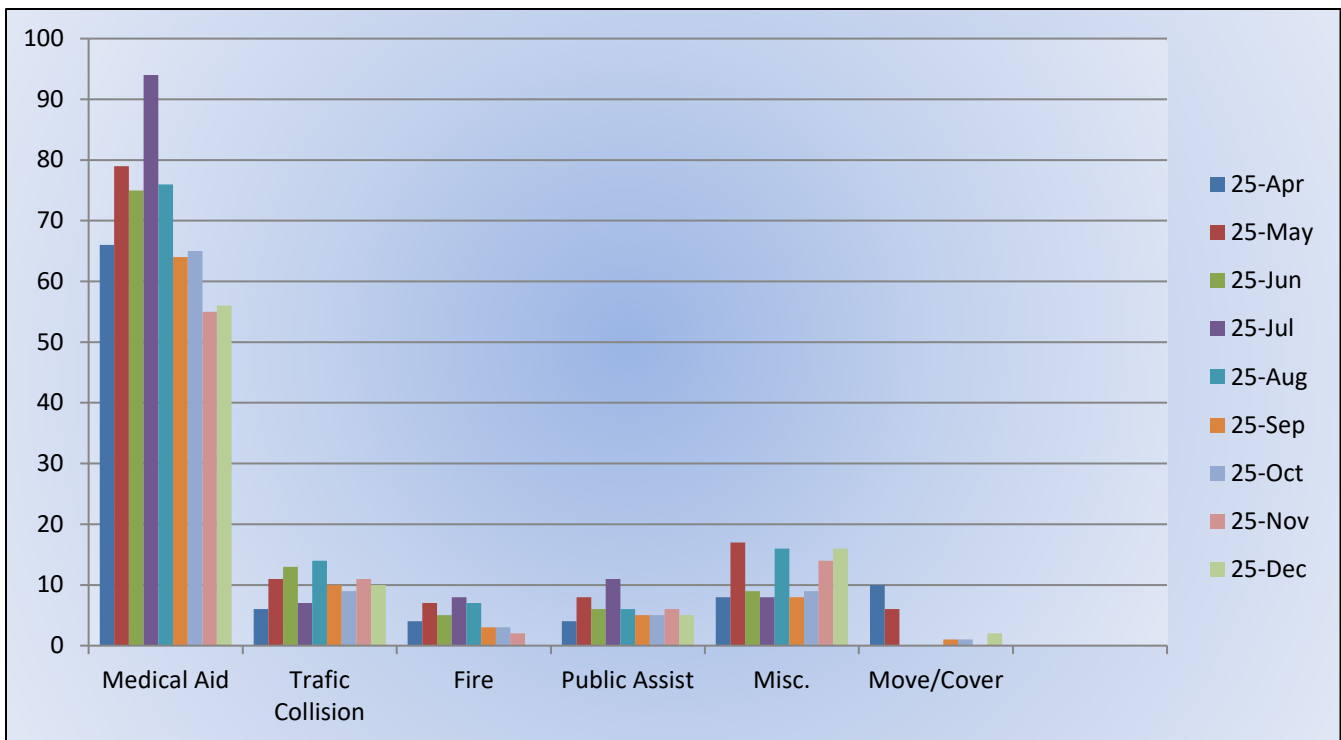
Transfer- 0

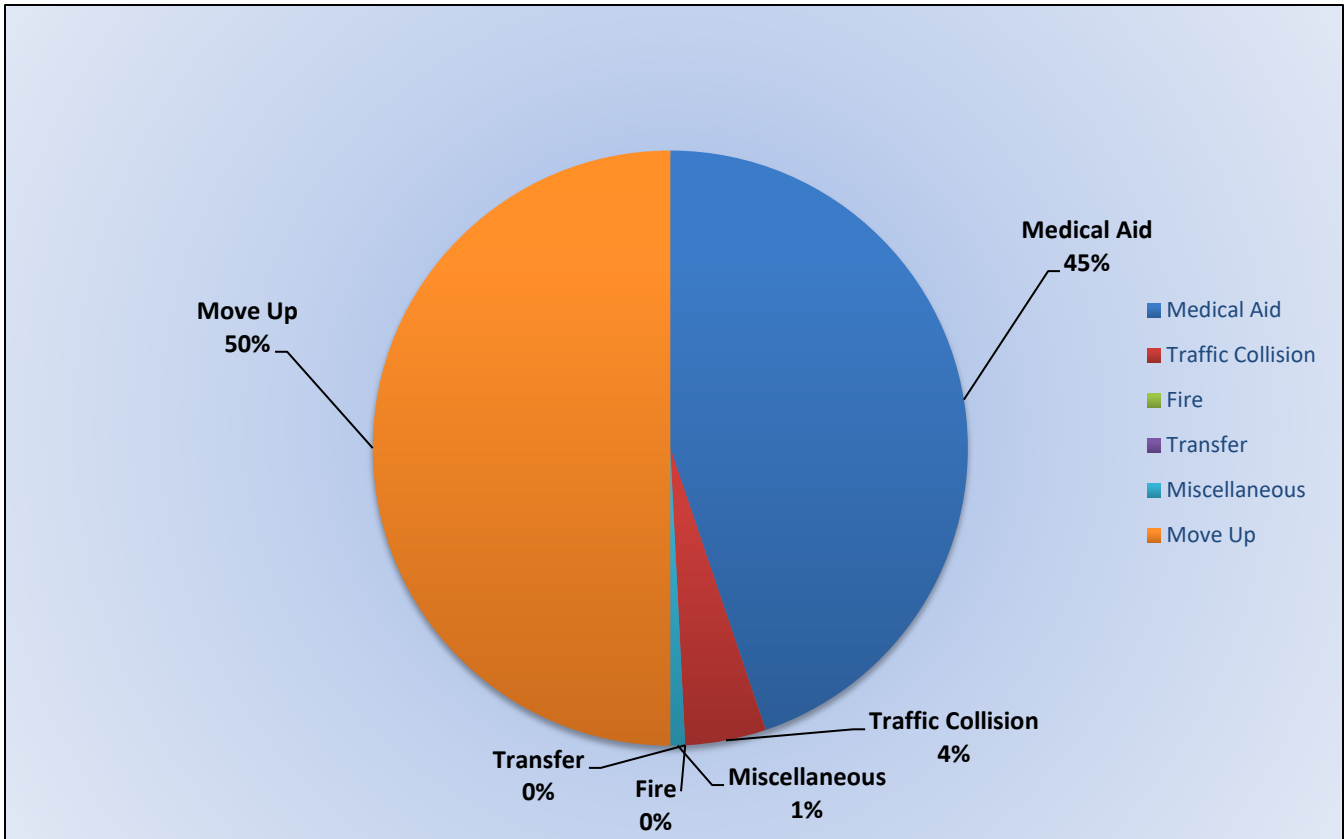
Misc- 2

Move/Cover - 125

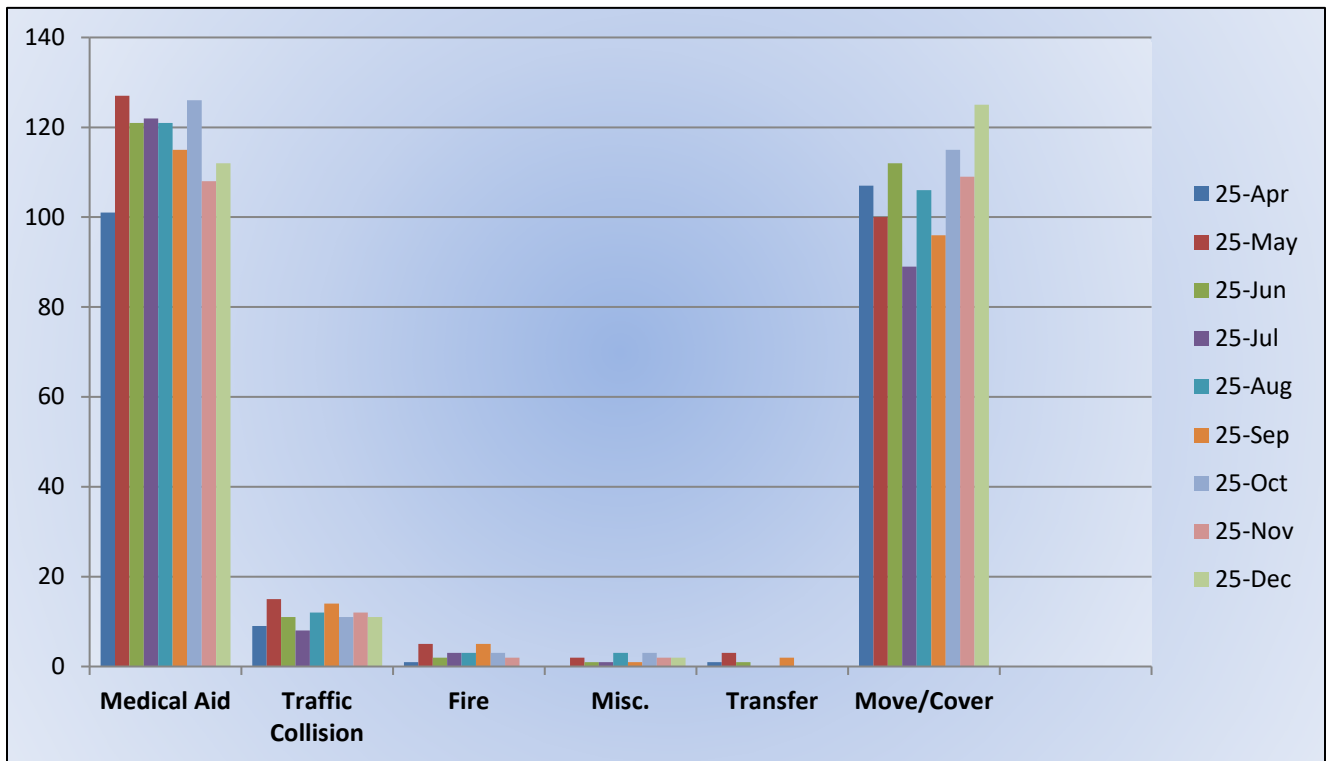


### E17 Monthly Statistics Comparison





**M17 Monthly Statistics Comparison**





## El Dorado County Fire Protection District

---

### Station 19 Run Review December 2025

#### **ENGINE 319:** 66 Total Calls

Medical Aid- 31

Fire- 2

Traffic Collision-12

Public Assist- 2

Misc/Alarm- 6

Move/Cover- 8

#### **MEDIC 19:** 279 Total Calls

Medical Aid- 109

Fire- 5

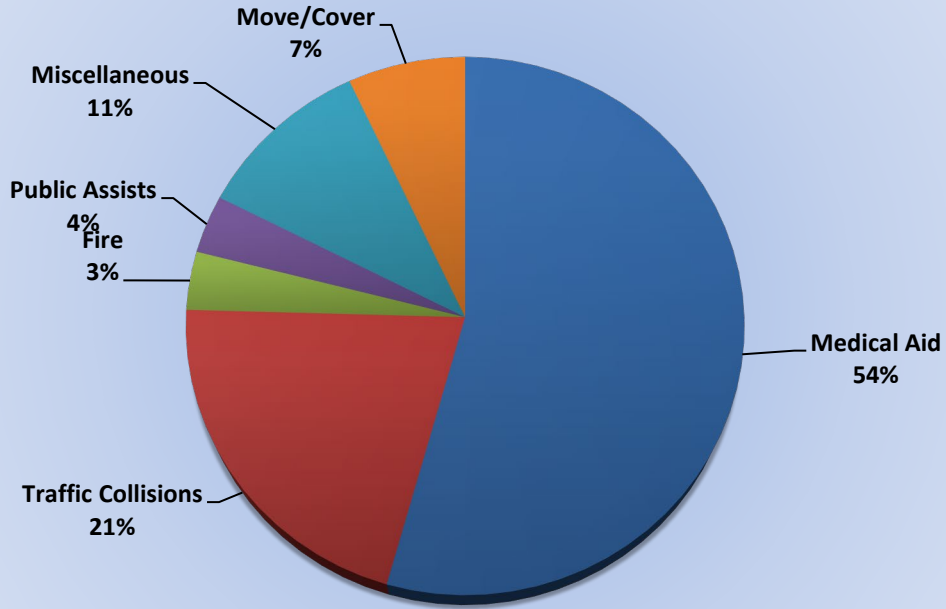
Traffic Collision- 19

Transfer- 2

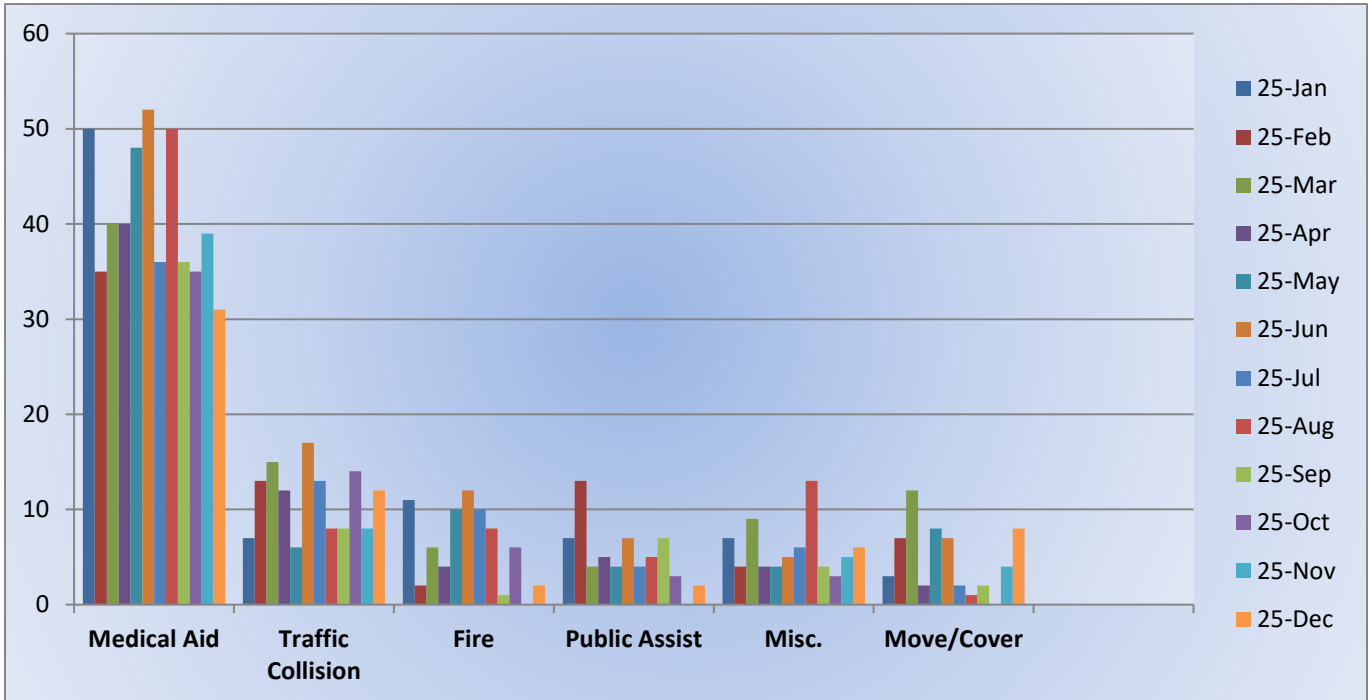
Misc/Alarm- 0

Move/Cover- 144

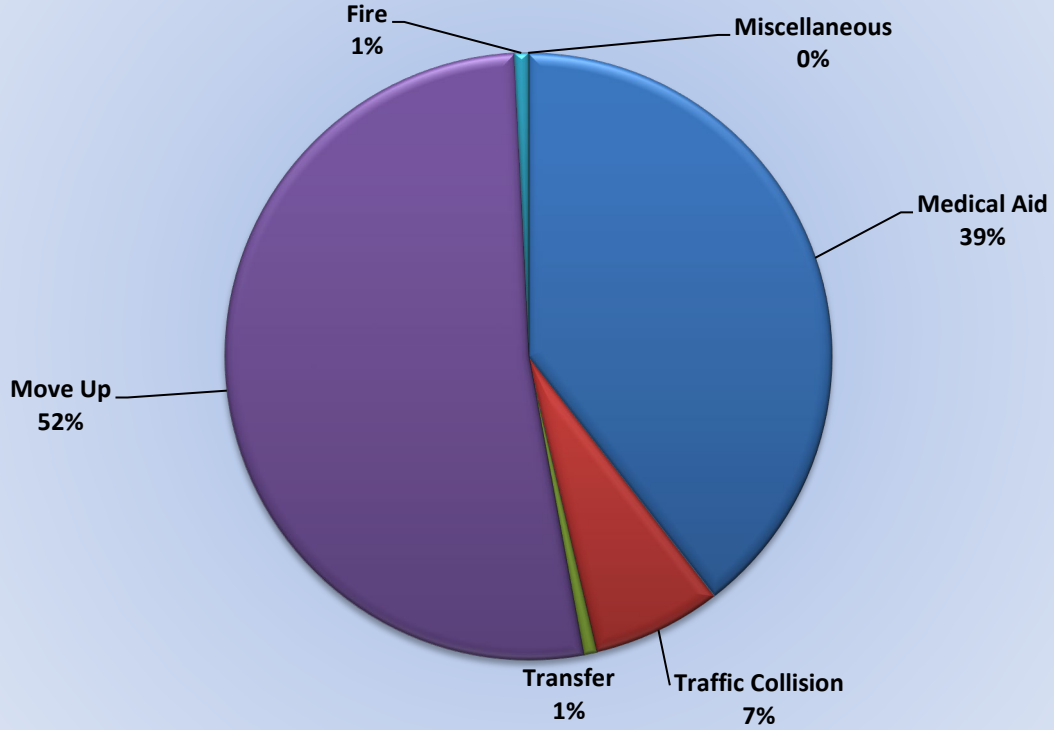
### Response Breakdown December 2025



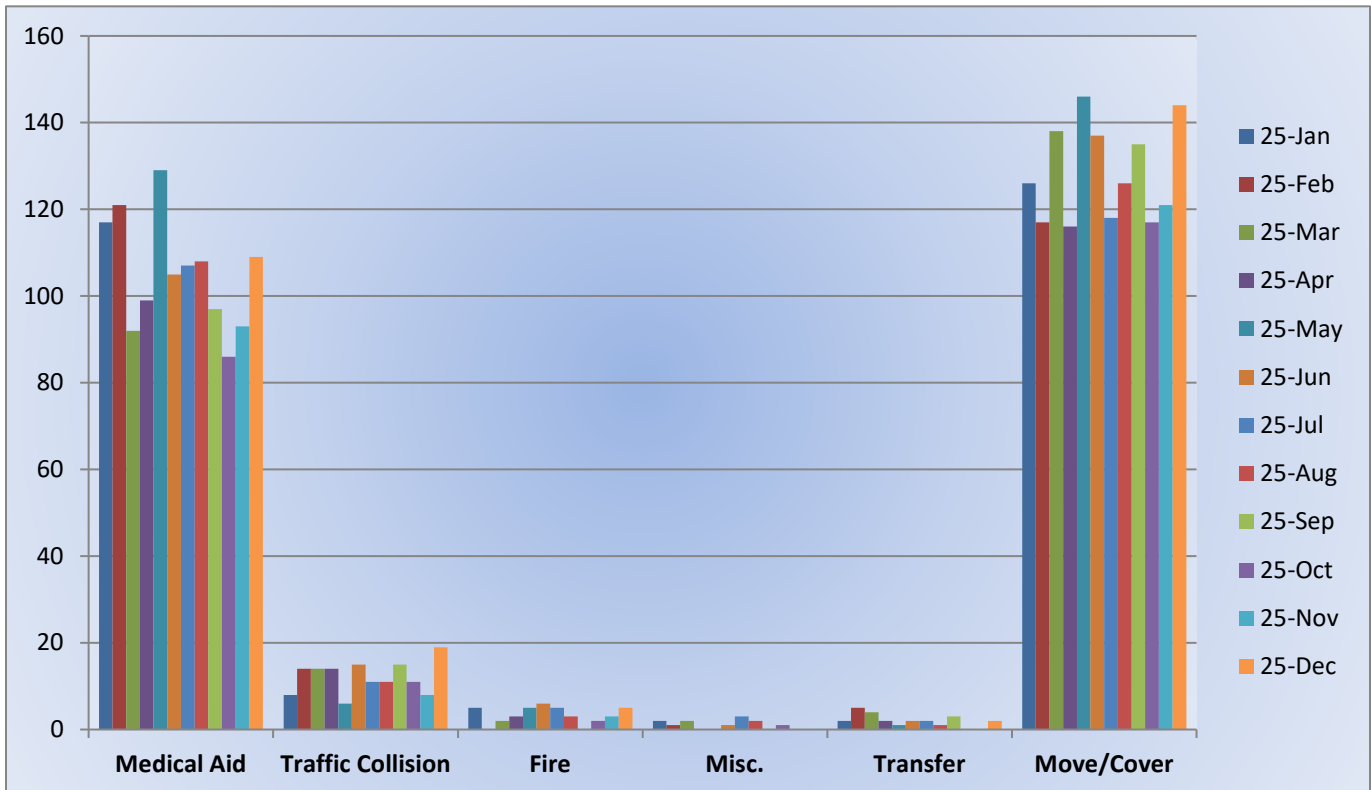
### E319 Monthly Statistics Comparison



### Response Breakdown December 2025



### M19 Monthly Statistics Comparison





## El Dorado County Fire Protection District

---

### Station 25 Run Review December 2025

#### **ENGINE 25: 271 Total Calls**

Medical Aid- 208

Fire- 0

Traffic Collision- 18

Public Assist- 17

Misc- 18

Move/Cover - 0

#### **MEDIC 25: 272 Total Calls**

Medical Aid- 237

Fire- 0

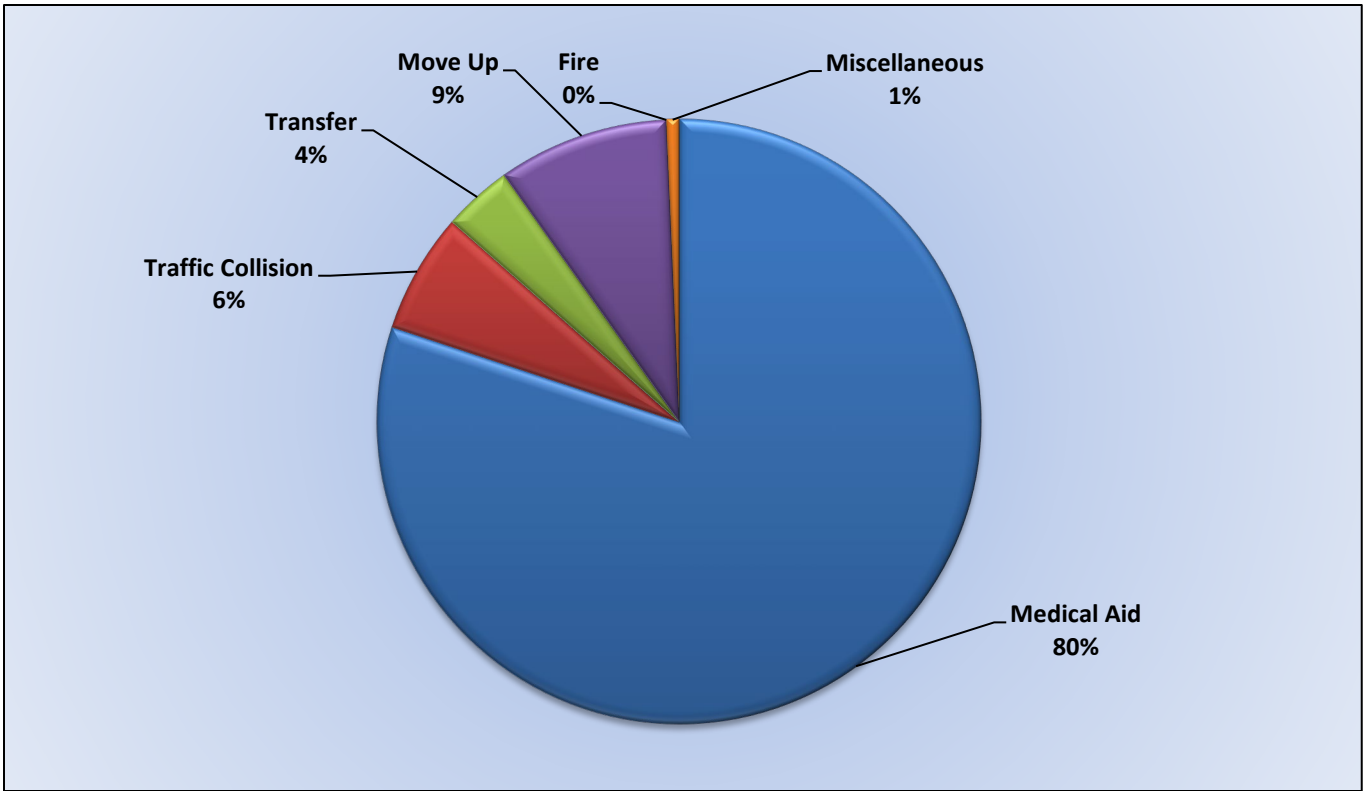
Traffic Collision- 19

Transfer- 11

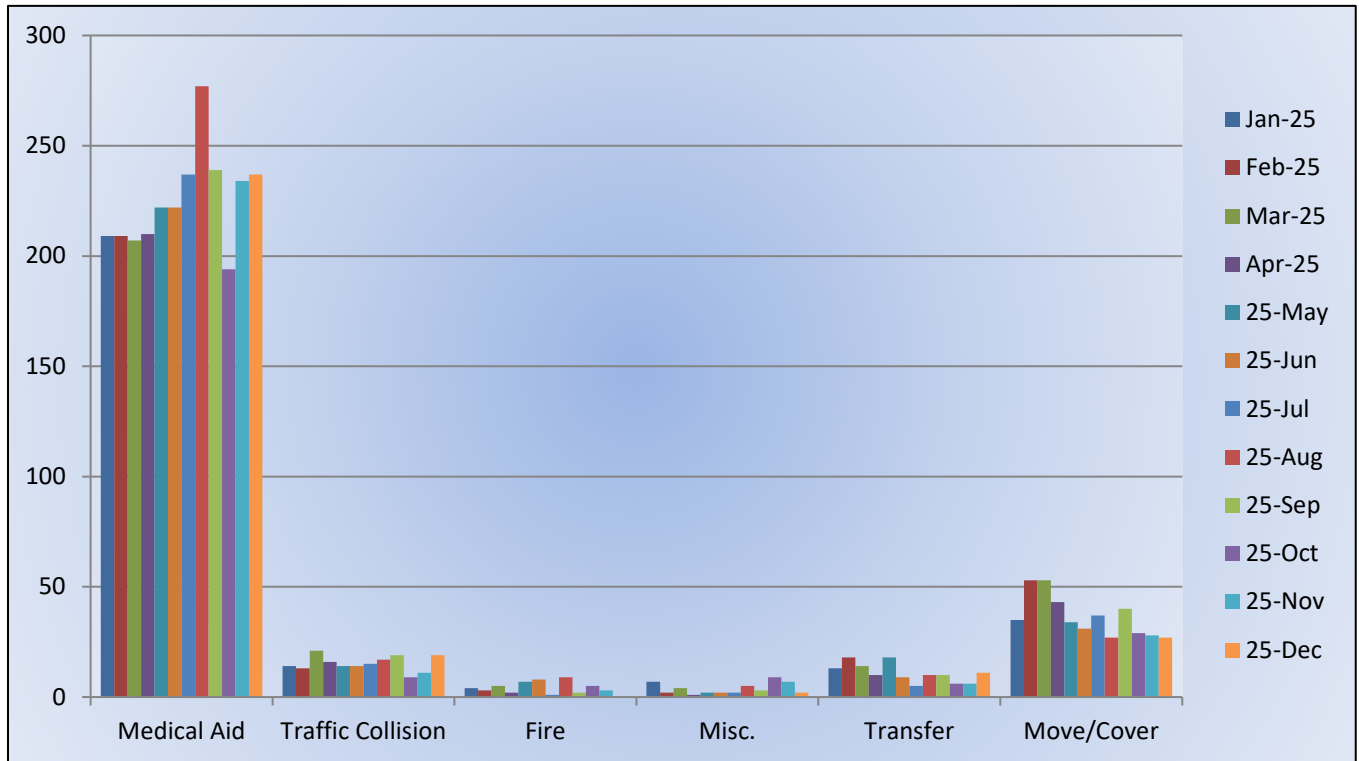
Misc- 2

Move/Cover – 27





**M25 Monthly Statistics Comparison**





## El Dorado County Fire Protection District

---

### Station 28 Run Review December 2025

#### **ENGINE 28: 122 Total Calls (\*TRUCK 28: 4 Total Calls)**

Medical Aid- 75

Fire- 4 (1\*)

Traffic Collision- 29

Public Assist- 2

Misc- 8 (3\*)

Move/Cover- 4

#### **MEDIC 28: 325 Total Calls**

Medical Aid- 220

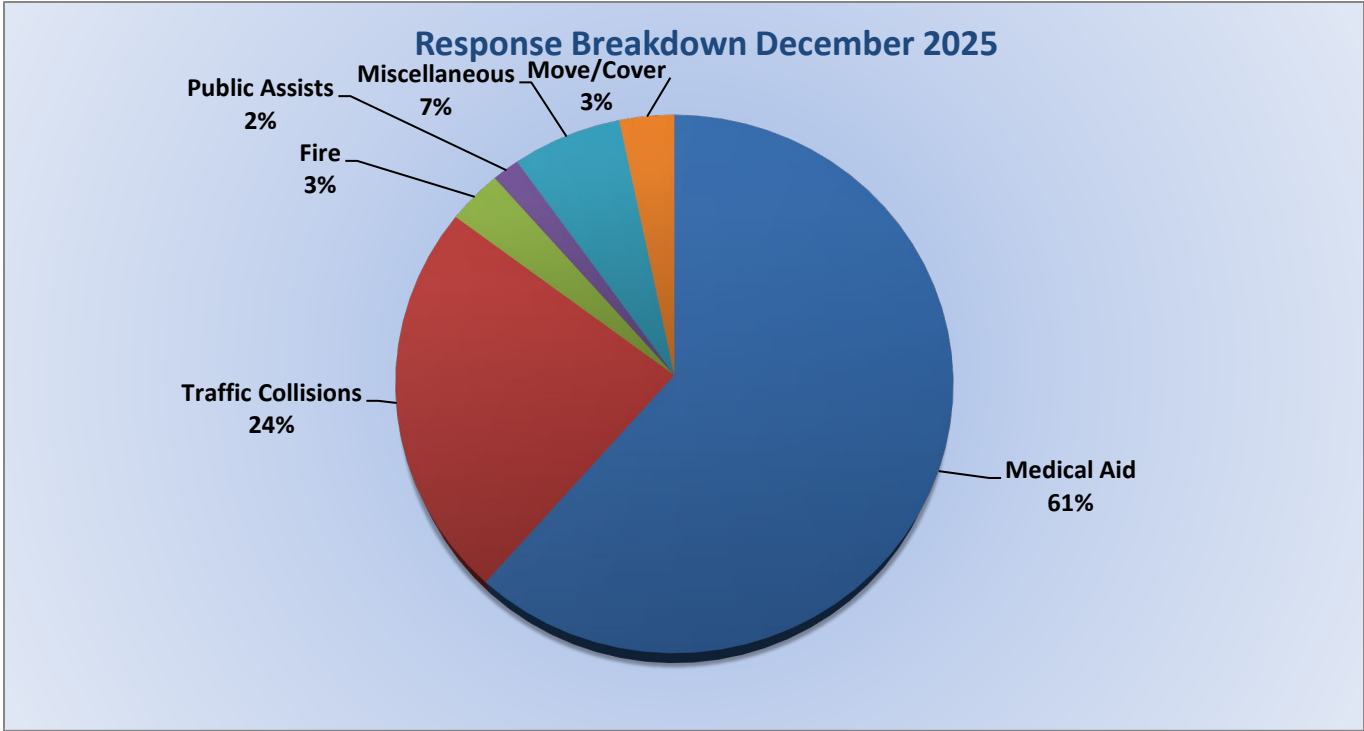
Fire- 3

Traffic Collision- 28

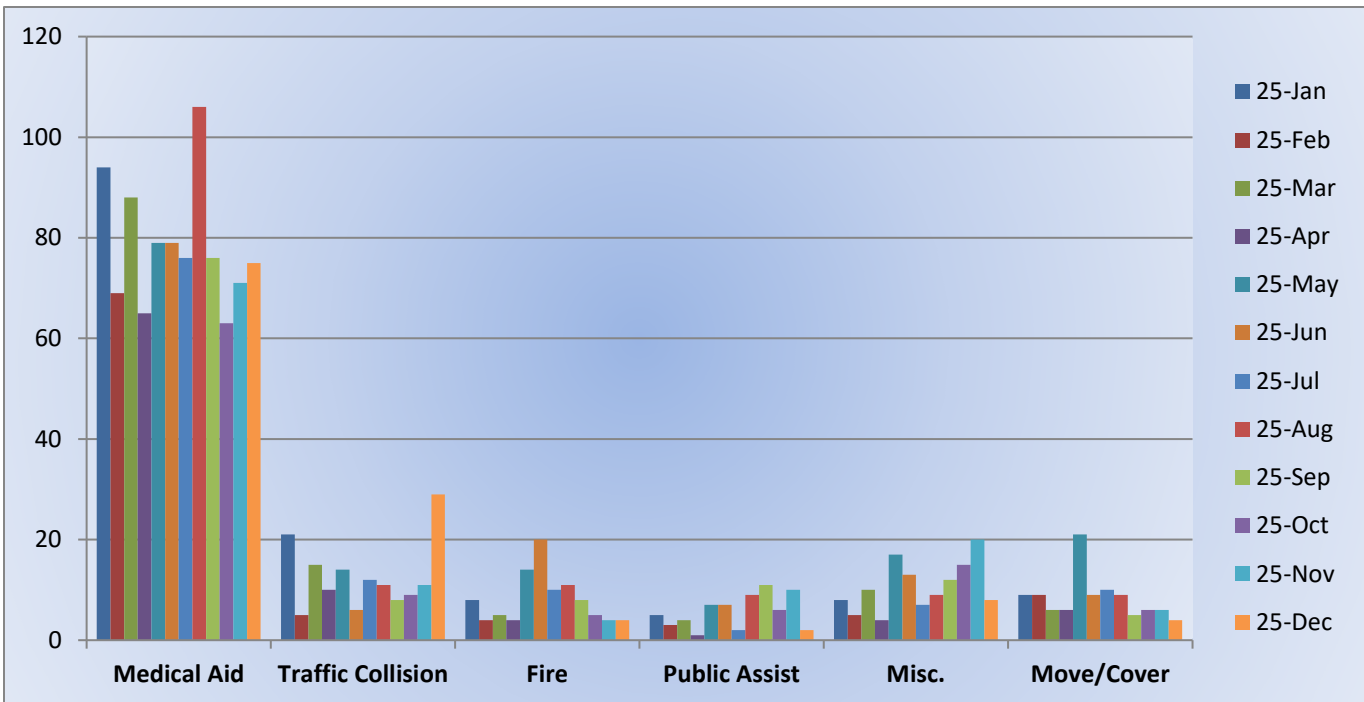
Transfer- 3

Misc- 1

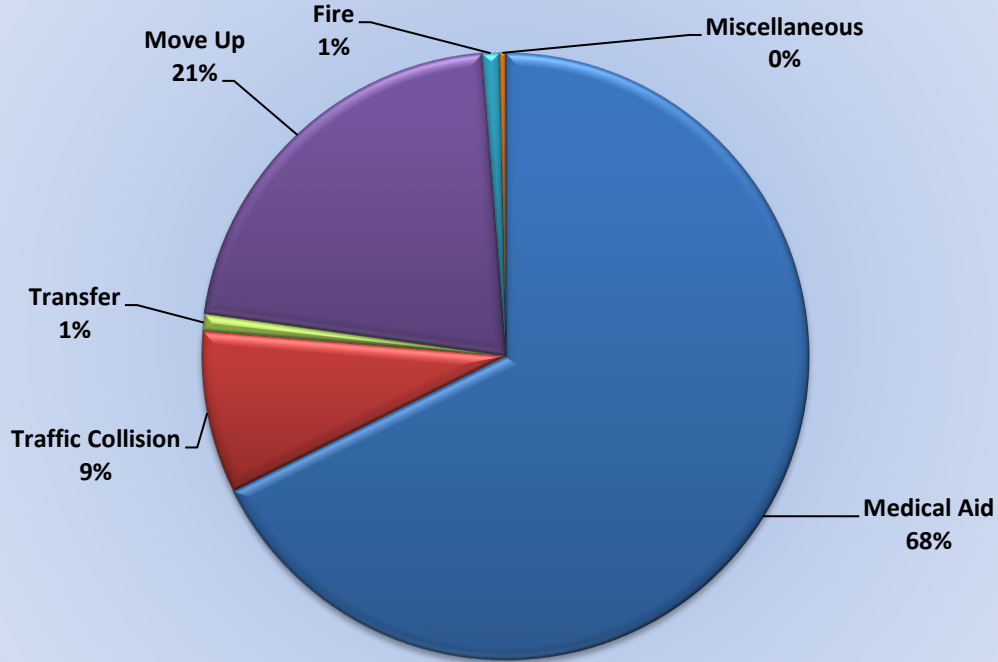
Move/Cover- 70



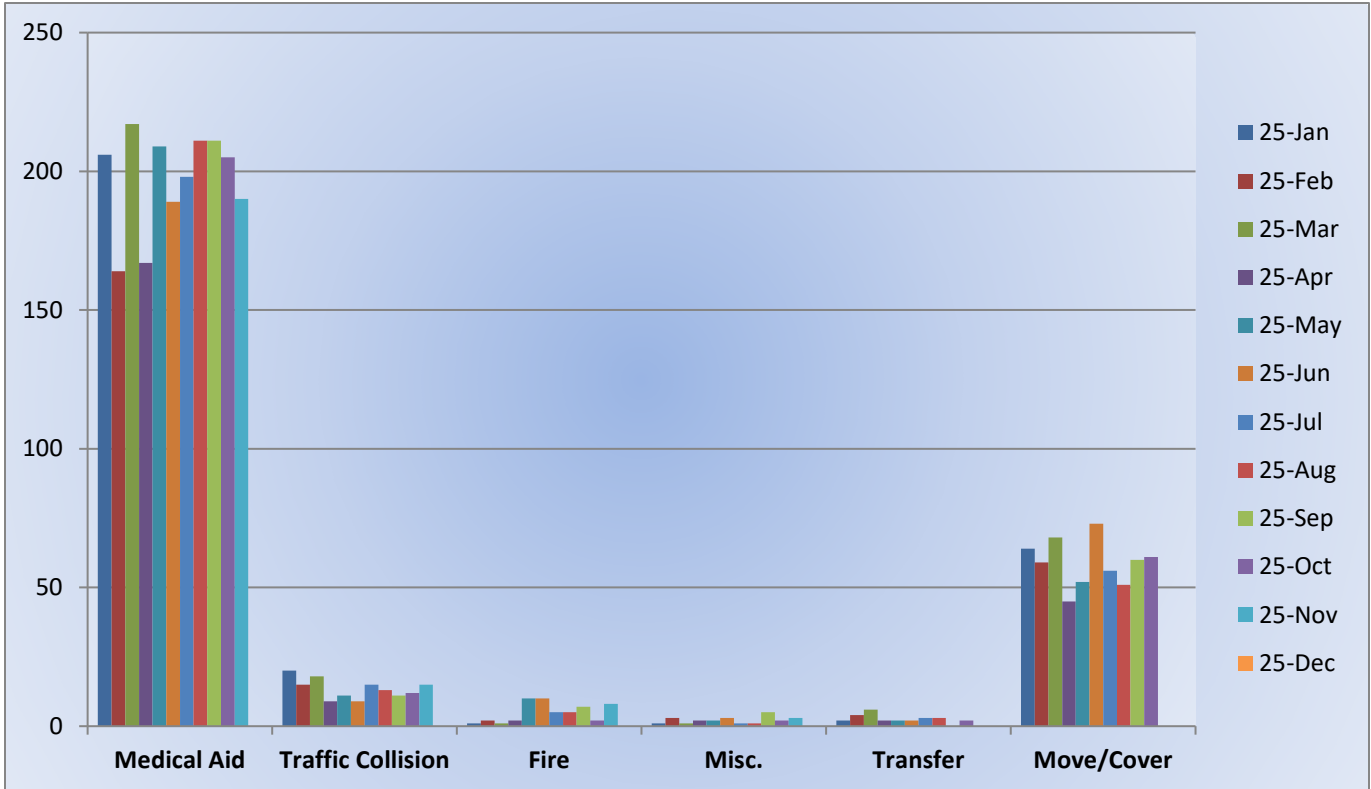
**E28 Monthly Statistics Comparison**



### Response Breakdown December 2025



### M28 Monthly Statistics Comparison





El Dorado County Fire Protection District

---

## Station 72 and Medic 49 Run Review December 2025

**ENGINE 72:** Total Calls 47

Medical Aid – 34

Fire – 0

Traffic Collision – 7

Public Assist – 2

Misc – 4

Move/Cover – 0

**MEDIC 49:** Total Calls 276

Medical Aid – 202

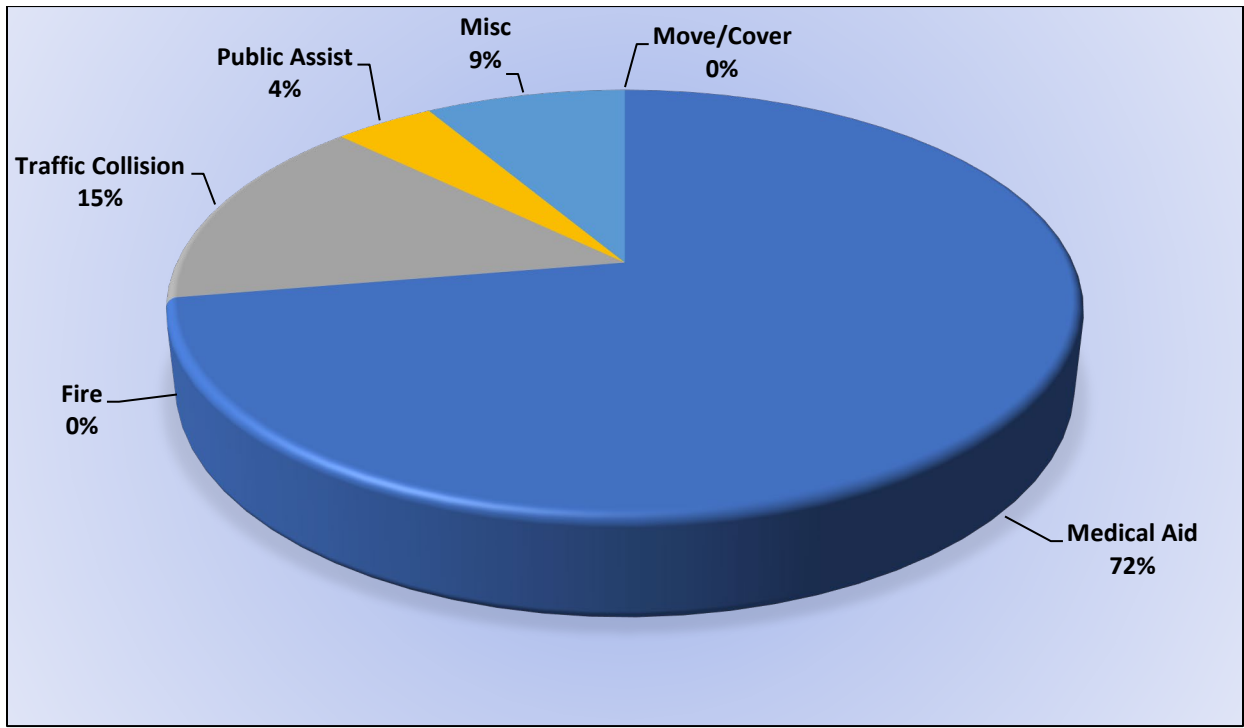
Fire – 5

Traffic Collision – 14

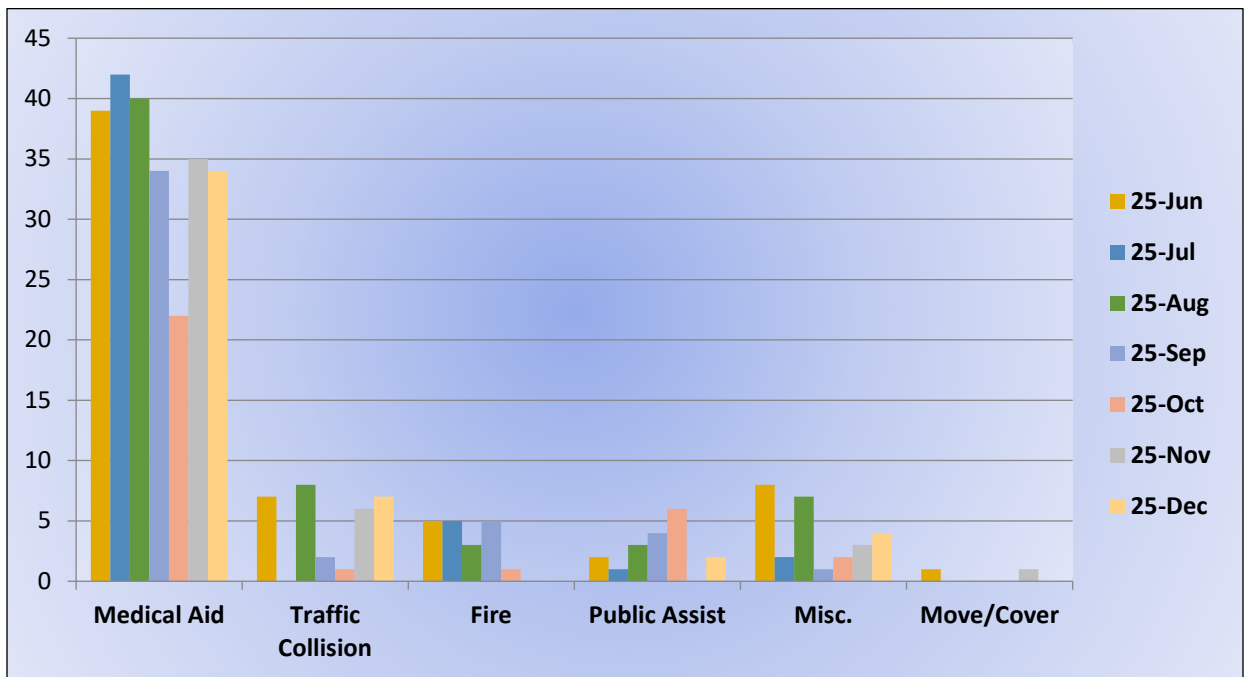
Transfer – 5

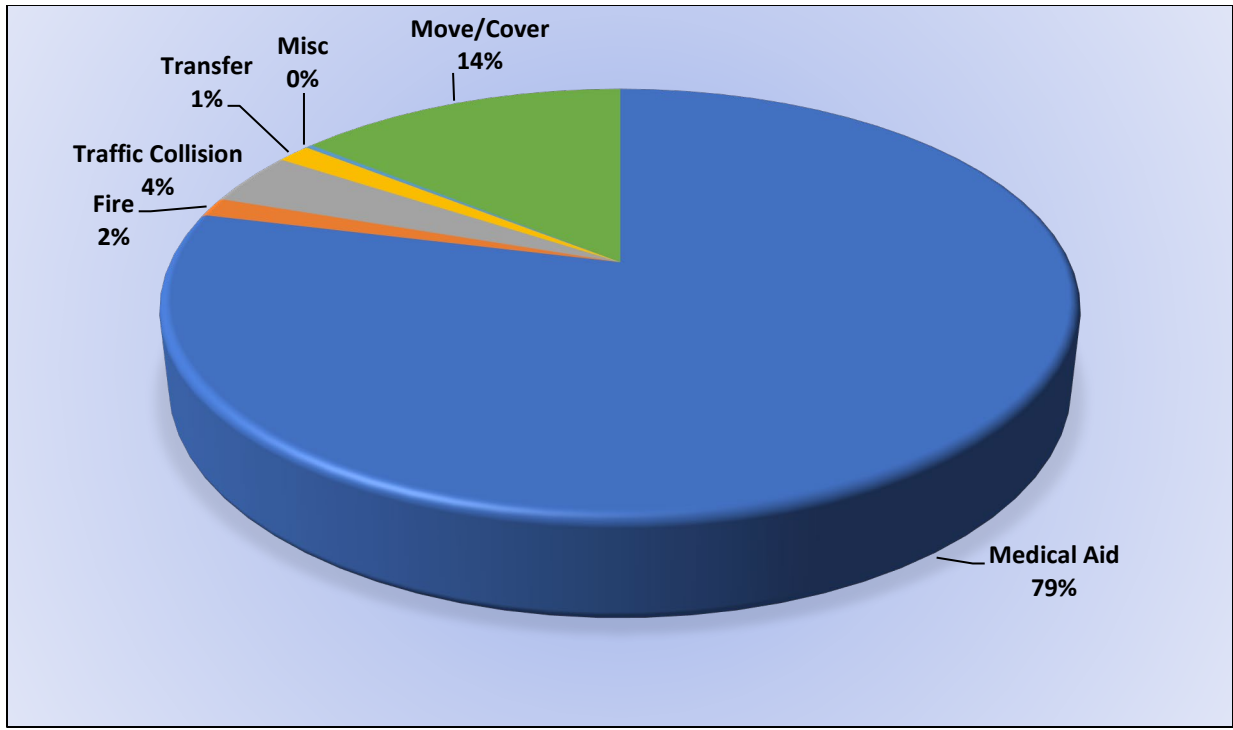
Misc – 1

Move/Cover – 49



### E72 Monthly Statistics Comparison





**M49 Monthly Statistics Comparison**

