

CODE ANALYSIS LEGEND

AREA IDENTITY/CODE ANALYSIS

LOBBY = ROOM NAME

E = OCCUPANCY GROUP

6 = SPACE USE - REF SPACE USE SCHEDULE

900 = FLOOR AREA - SQUARE FEET

45 = OCCUPANT LOAD (CBC TABLE 1004.1.2)

• = OCCUPANT LOAD SIGN REQUIRED WHEN NOTED - SEC 1004.3 - REF SIGNAGE SCHEDULE. LOCATE A SIGN NEAR THE MAIN EXIT FROM THE ROOM.

{50} = OCCUPANT LOAD PLUS ANCILLARY SPACE WHERE OCCURS

EXIT SIGN - REF ELEC

PANIC HARDWARE DEVICE - REF DOOR SCHED AND HARDWARE GROUP

EXISTING

EXIT SIGNAGE WHERE APPLICABLE. X - EXIT, XR - EXIT ROUTE

APPROVED FIRE EXTINGUISHER MINIMUM 2A:10B:C RATING, 5'-0" AFF. ALL FIRE EXTINGUISHERS ARE TO HAVE CURRENT STATE FIRE MARSHALL CERTIFICATION TAGS

KNOX BOX, 3200 SERIES, 5'-0" AFF. PROVIDE KEYS WITH IDENTIFICATION TAGS - SEE SITE PLAN FOR LOCATION

LOBBY	E 16
	900
	45 •
	{50}

PLUMBING FIXTURE CALCULATION

BUILDING OCCUPANCY		WATER CLOSETS		URINALS		LABORATORIES	
BUSINESS	M 1-1-100	M 1-1-100	F 1-1-200	M 1-1-200	F 1-1-200	M 1-1-200	F 1-1-200

GENERAL NOTES

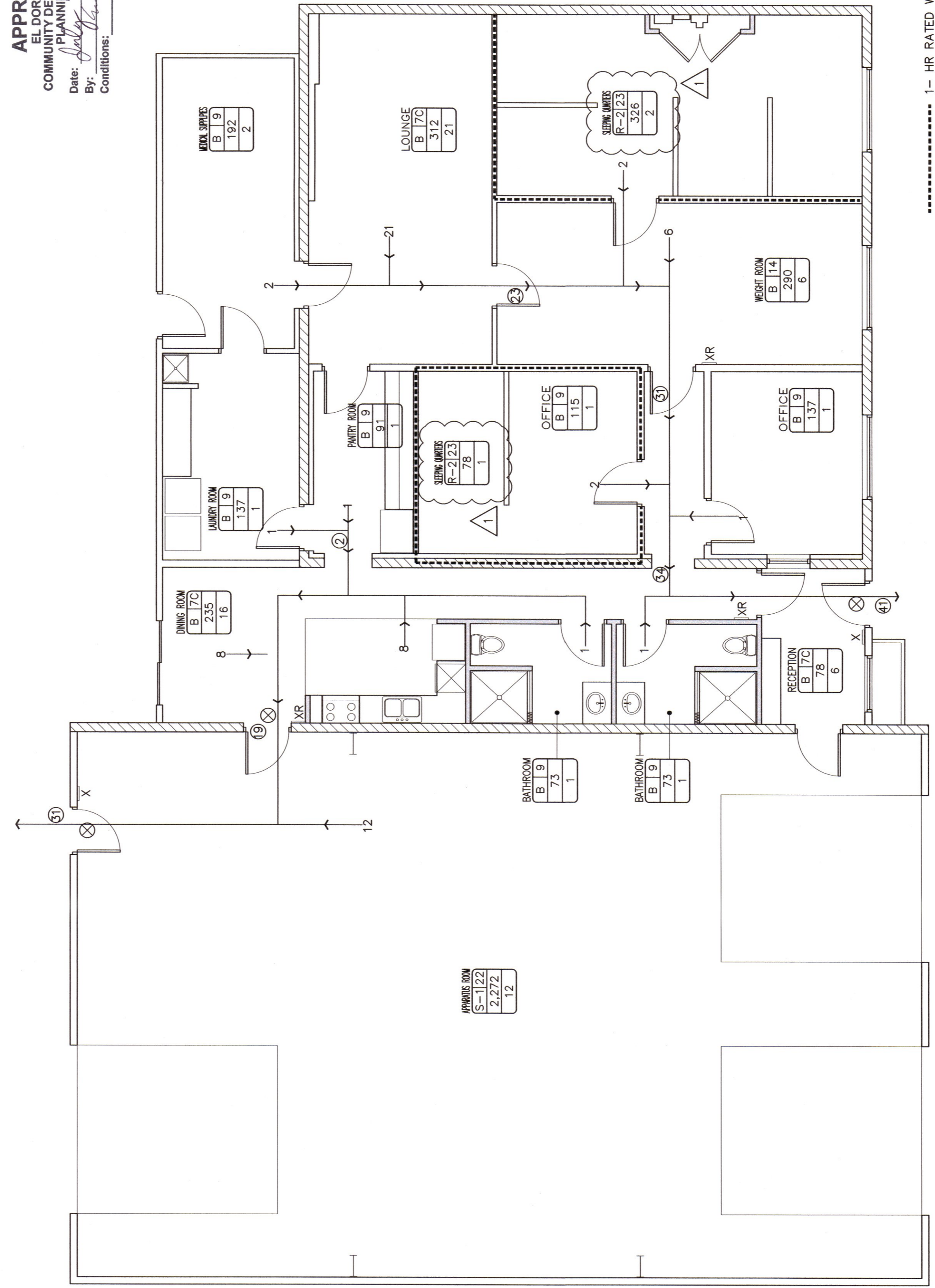
- OCCUPANT LOAD FACTORS ARE ACCORDING TO CBC SECTION 1004, TABLE NO. 1004.1.2
- ACCESSORY USE AREA EXCLUDED FROM OCCUPANT LOADING
- WHERE OCCUPANT LOAD SIGN IS REQUIRED THE ROOM SHALL BE POSTED WITH A SIGN NEAR THE MAIN EXIT FROM THE ROOM. REFER TO SIGNAGE SCHEDULE FOR DETAIL.

SPACE USE / OCCUPANT LOAD SCHEDULE

NO	SPACE USE	OCCUPANT LOAD FACTOR SF / OCCUPANT
1	ACCESSORY STORAGE AREAS, MECH. EQUIP. ROOM	300 GROSS
2	AGRICULTURAL BUILDING	300 GROSS
3	AIRCRAFT HANGARS	500 GROSS
4	AIRPORT TERMINAL	
4A	BAGGAGE CLAIM	20 GROSS
4B	BAGGAGE HANDLING	300 GROSS
4C	CONCOURSE	100 GROSS
4D	WAITING AREAS	15 GROSS
5	ASSEMBLY - GAMING FLOORS	11 GROSS
6	ASSEMBLY WITH FIXED SEATS	PER SECTION 1004.7
7	ASSEMBLY WITHOUT FIXED SEATS	
7A	CONCENTRATED (CHAIRS ONLY)	7 NET
7B	STANDING SPACE	5 NET
7C	UNCONCENTRATED (TABLES & CHAIRS)	15 NET
8	BOWLING CENTERS - ALLOW 5 PERSONS FOR EACH LANE INCLUDING 15 FEET OF RUNWAY, AND FOR ADDITIONAL AREAS	7 NET
9	BUSINESS AREAS	150 GROSS
10	COURTROOMS - OTHER THAN FIXED SEATING AREAS	40 NET
11	DAY CARE	35 NET
12	DORMITORIES	50 GROSS
13	EDUCATIONAL	
13A	CLASSROOM AREAS	20 NET
13B	SHOPS AND OTHER VOCATIONAL ROOM AREAS	50 NET
14	EXERCISE ROOMS	50 GROSS
15	H-5 FABRICATION AND MANUFACTURING AREAS	200 GROSS
16	INDUSTRIAL AREAS	100 GROSS
17	INSTITUTIONAL AREAS	
17A	INPATIENT TREATMENT AREAS	240 GROSS
17B	OUTPATIENT AREAS	100 GROSS
17C	SLEEPING AREAS	120 GROSS
18	KITCHEN - COMMERCIAL	200 GROSS
19	LIBRARY	
19A	READING ROOMS	50 NET
19B	STACK AREAS	100 GROSS
20	LOCKER ROOMS	50 GROSS
21	MERCANTILE	
21A	MAIN SALES AREA	60 GROSS
21C	STORAGE, STOCK, SHIPPING AREAS	300 GROSS
22	PARKING GARAGES	200 GROSS
23	RESIDENTIAL	200 GROSS
24	SKATING RINKS, SWIMMING POOLS	
24A	SKATING RINK AND POOL	50 GROSS
24B	DECKS	15 GROSS
25	STAGES AND PLATFORMS	15 NET
26	WAREHOUSES	500 GROSS

APPROVED BY  
EL DORADO COUNTY  
COMMUNITY DEVELOPMENT AGENCY  
PLANNING SERVICES

Date: \_\_\_\_\_  
By: \_\_\_\_\_  
Conditions: \_\_\_\_\_



..... 1-HR RATED WALL  
TOTAL OCCUPANTS - 72

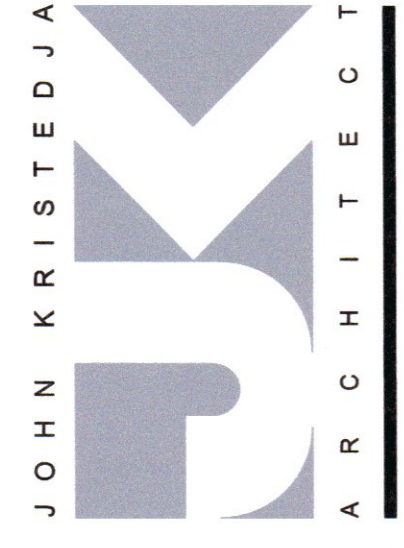
TOTAL BUILDING OCCUPANT LOAD: 72 OCCUPANTS

3/16" = 1'-0"

OCCUPANCY/EXITING FLOOR PLAN

TABLE 1004.5 - MAX OCC. LOADS

CR1



ARCHITECTURE + PLANNING  
6288 BUTTERFIELD WAY  
PLACERVILLE, CA 95667  
(916) 933-7633 T  
(916) 933-7650 F



PROJECT NAME  
COUNTY FIRE STATION NO. 17 REMODEL

PROJECT ADDRESS  
6430 PONY EXPRESS TRAIL  
POLLOCK PINES, CA 95726

DRAWING NAME  
OCCUPANCY AND EXITING ANALYSIS

SUBMITTAL	DATE

NO	DATE	REVISION
1	12/15/2020	PLANCHER CORRECTION 1
2		
3		
4		
5		

DRAWN BY: JK  
CHECKED BY: JK

DATE: 07/28/2020  
SCALE: NOTED

PROJECT NUMBER: 202103

DRAWING NUMBER: